

die beide der Erhaltung der Art neue Schwierigkeiten bereiteten, mögen den Prozeß der Umwandlung der normalen Weibchen in ergatoide beschleunigt haben, während die Entwicklung bei uns mangels solcher außergewöhnlicher Triebkräfte in bedeutend langsamerem Tempo verlief.

## H. Sauter's Formosa-Ausbeute.

### *Neuroptera Planipennia.*

By Esben Petersen, Silkeborg.

### *Panorpa Sauteri* n. sp.

Head, rostrum and palpi light brown; the apical joint of palpi with black tip. Antennae black; the 1<sup>st</sup> and 2<sup>nd</sup> joint light brown.

Pro-, meso- and metathorax light brown with a broad black median stripe on the dorsum. The black stripe begins at the ocell, which are light brown, like the

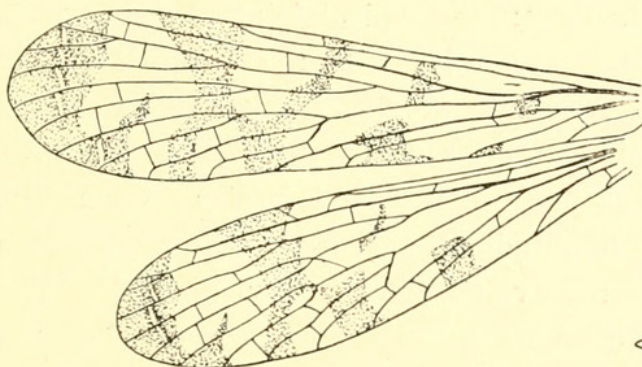


Fig. 1.

Fore and hind wing of  
*Panorpa Sauteri*.

head. 1<sup>st</sup>, 2<sup>nd</sup> and 3<sup>rd</sup> abdominal segment dorsally dark brown, ventrally yellowish brown, 4<sup>th</sup> segment dorsally paler; the rest of segments dorsally and ventrally yellowish brown. The gonopoda and the legs light brown. The process of the hind border of the 3<sup>rd</sup> abdominal segment very long, almost as long as 4<sup>th</sup>, 5<sup>th</sup> and 6<sup>th</sup> segments together. Membrane of wings

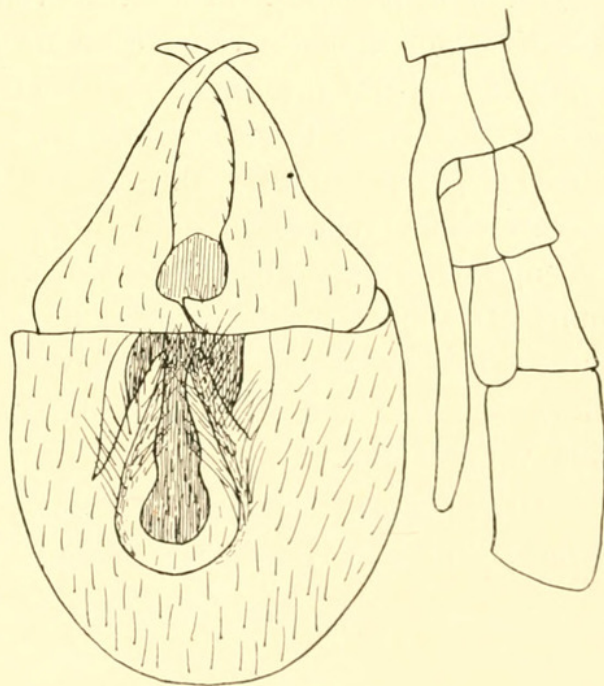


Fig. 2.

The gonopoda and the 3<sup>rd</sup>—6<sup>th</sup> segments  
of abdomen of *Panorpa Sauteri*.

with a strong brownish yellow tinge; the nervures darker, especially the costa. Several dark spots and cross bands are to be found. Length 12,5 mm; fore wing 12 mm; hind wing 10,5 mm.

One male, Type in Deutsches Entom. Museum, is captured by *Sauter*, VIII, 1909, at Koshun, Formosa.

*Panorpa formosana* Nav.

*Campodetecnum formosanum* Navas, Revue Russe d'Entom. XI, 1911.

Of this species I saw 3 females, captured by Sauter, January 1910, at Taihorin, Formosa, in Deutsches Entom. Museum. The specimens agree very well with the description given by Navas.

*Micromus Sauteri* n. sp.

Head and palpi reddish grey; the apical joint of palpi sharp pointed and yellow. Antennae yellowish white; 1<sup>st</sup> and 2<sup>nd</sup> joint brown. Thorax reddish grey. Abdomen greyish black. Head, thorax and abdomen yellowish haired. Anterior wings with yellowish grey tinge, especial along the basal part of the hind border. Costa and subcosta yellow; the other longitudinal nervures yellow and with greyish brown bands. The cross veins mostly greyish black. The apical row of gradate veins contains 11 veins in the one wing and 12 in the other; the inner row contains 7 veins. In the posterior part of the wings there are found some whitish dots along the nervures (especial towards the base). In the posterior wings all the nervures are yellowish white with exception of the cross veins in the apical series, which are brown. In the apical serie there are found 10 and in the inner serie 6 veins. All the borders and nervures in both wings with yellowish white hairs. Legs yellowish white, and the hind tibiae dilated. Length of fore wing 7 mm; of hind wing 6 mm.

One female, captured by Sauter, April 1909, at Kanshirei, Formosa, Type in Deutsches Entom. Museum.



Esben-Petersen, Peter. 1912. "H. Sauter's Formosa-Ausbeute. Neuroptera Planipennia [I]." *Entomologische Mitteilungen* 1, 197–198.

<https://doi.org/10.5962/bhl.part.25897>.

**View This Item Online:** <https://www.biodiversitylibrary.org/item/39809>

**DOI:** <https://doi.org/10.5962/bhl.part.25897>

**Permalink:** <https://www.biodiversitylibrary.org/partpdf/25897>

**Holding Institution**

Smithsonian Libraries

**Sponsored by**

Smithsonian

**Copyright & Reuse**

Copyright Status: NOT\_IN\_COPYRIGHT

This document was created from content at the **Biodiversity Heritage Library**, the world's largest open access digital library for biodiversity literature and archives. Visit BHL at <https://www.biodiversitylibrary.org>.