

Crystal structure of bromido-*fac*-tricarbonyl-[5-phenyl-3-(pyridin-2-yl)-1*H*-1,2,4-triazole- $\kappa^2N,N'$ ]rhenium(I)Kseniia Piletska,<sup>a\*</sup> Konstantin V. Domasevitch<sup>b</sup> and Alexander V. Shtemenko<sup>a</sup>Received 4 November 2014  
Accepted 23 November 2014<sup>a</sup>Department of Inorganic Chemistry, Ukrainian State University of Chemical Technology, Gagarin Ave. 8, Dnipropetrovsk 49005, Ukraine, and <sup>b</sup>Inorganic Chemistry Department, National Taras Shevchenko University of Kyiv, Volodymyrska Street 64/13, Kyiv 01601, Ukraine. \*Correspondence e-mail: ksenijapiletska@gmail.com

Edited by M. Weil, Vienna University of Technology, Austria

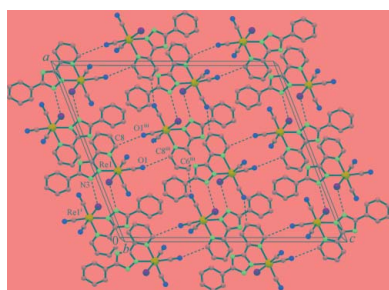
**Keywords:** Crystal structure; rhenium carbonyl complex; 5-phenyl-3-(pyridin-2-yl)-1*H*-1,2,4-triazole; hydrogen bonding; slipped  $\pi$ - $\pi$  stacking interactions**CCDC reference:** 1031232**Supporting information:** this article has supporting information at journals.iucr.org/e

In the title compound, [ReBr(C<sub>13</sub>H<sub>10</sub>N<sub>4</sub>)(CO)<sub>3</sub>], the Re<sup>I</sup> atom has a distorted octahedral coordination environment. Two N atoms of the 5-phenyl-3-(pyridin-2-yl)-1*H*-1,2,4-triazole ligand and two of the three carbonyl groups occupy the equatorial plane of the complex, with the third carbonyl ligand and the bromide ligand in the axial positions. The three carbonyl ligands are arranged in a *fac* configuration around the Re<sup>I</sup> atom. Mutual N—H...Br hydrogen bonds arrange molecules into centrosymmetric dimers. Additional stabilization within the crystal structure is provided by C—H...O and C—H...Br hydrogen bonds, as well as by slipped  $\pi$ - $\pi$  stacking interactions [centroid-to-centroid distance = 3.785 (5) Å], defining a three-dimensional network.

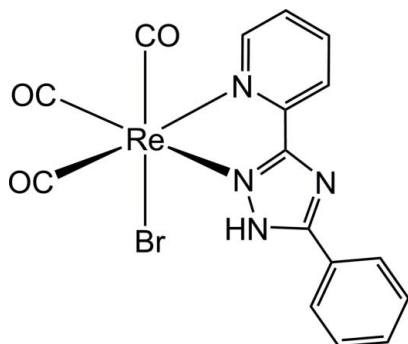
## 1. Chemical context

The coordination chemistry of rhenium and technetium has been well studied over the last half century, particularly in view of the potential applications of their <sup>186/188</sup>Re and <sup>99m</sup>Tc isotopes in therapeutic and diagnostic agents in nuclear medicine (Volkert & Hoffman, 1999; Alberto *et al.*, 1999). Complexes of the type [M(CO)<sub>3</sub>(NN)X] (M = Tc, Re; NN = bidentate nitrogen donor; X = anionic ligand) have been shown to possess interesting photophysical, photochemical and excited-state redox properties (Striplin & Crosby, 2001; Stufkens & Vlček, 1998), making this class of complexes applicable as fluorescent probes, in addition to their potential usage as radio-imaging and therapeutic agents. Moreover, metal carbonyls display intense infrared absorptions in the range 1800 to 2200 cm<sup>-1</sup>, which is the IR transparency window for biological media (Hildebrandt, 2010). In addition to their luminescent properties, the vibrational signature of *fac*-[Re(CO)<sub>3</sub>(NN)] is appropriate for IR imaging (Policar *et al.*, 2011; Clède *et al.*, 2012). They are thus valuable as small molecular units enabling multimodal imaging involving vibrational-based detections (IR, Raman) and fluorescence (Clède *et al.*, 2012). In [Re(CO)<sub>3</sub>(NN)X] compounds, the photophysical properties of the complexes are closely dependent on the ligand. When NN is a ligand with low  $\pi^*$  orbitals, the corresponding [Re(CO)<sub>3</sub>(NN)] unit is luminescent (Wrighton & Morse, 1974) and this property has often been used in subcellular bio-imaging (Lo *et al.*, 2012; Baggaley *et al.*, 2012; Xiang *et al.*, 2013; Coogan & Fernandez-Moreira, 2014).

In this communication, we report the synthesis and crystal structure analysis of a novel Re<sup>I</sup> complex which contains the



triazole ligand 5-phenyl-3-(pyridin-2-yl)-1*H*-1,2,4-triazole, [Re(CO)<sub>3</sub>(C<sub>13</sub>H<sub>10</sub>N<sub>4</sub>)Br]. Its luminescent properties will be reported in a forthcoming article.

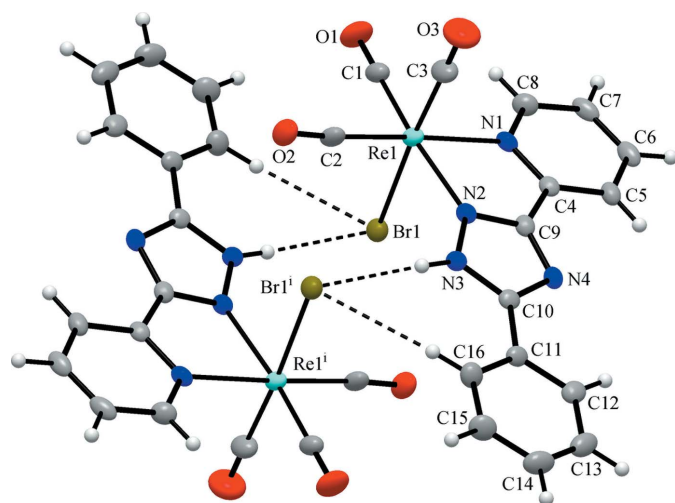


## 2. Structural commentary

In the title compound, the Re<sup>I</sup> atom is in a slightly distorted octahedral coordination environment (Fig. 1). The three carbonyl ligands bonded to the Re<sup>I</sup> atom are arranged in a *fac*-configuration. The distances of C1, C2, and C3 to the Re<sup>I</sup> atom are 1.905 (4), 1.915 (4), and 1.922 (6) Å, respectively, and the Re–N bonds lengths are 2.201 (3) and 2.164 (3) Å. The CO ligands are almost linearly coordinated with O–C–Re bond angles of 178.4 (4), 175.6 (3) and 179.0 (4)°. The C–Re–C bond angles between CO carbon atoms are 87.78 (17), 90.4 (2) and 89.18 (19)°, close to ideal values, whereas the *cis* equatorial bite angle [N1–Re1–N2] is 74.33 (11)°. All other bond lengths and angles are comparable to those found for related Re<sup>I</sup> complexes (Rajendran *et al.*, 2000).

## 3. Supramolecular features

The title compound adopts a typical molecular structure. There is only one relatively strong donor (N–H) and one



**Figure 1**  
The structure of the title complex, showing the association of molecules into a centrosymmetric dimer by means of mutual hydrogen bonds of the N–H···Br and C–H···Br types. Displacement ellipsoids are drawn at the 40% probability level. [Symmetry code: (i)  $-x + \frac{1}{2}, -y + \frac{1}{2}, -z$ .]

**Table 1**  
Hydrogen-bond geometry (Å, °).

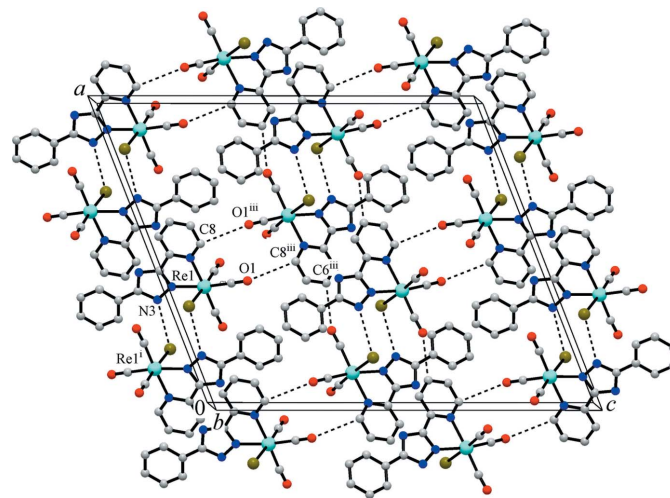
| <i>D</i> –H··· <i>A</i>    | <i>D</i> –H | H··· <i>A</i> | <i>D</i> ··· <i>A</i> | <i>D</i> –H··· <i>A</i> |
|----------------------------|-------------|---------------|-----------------------|-------------------------|
| N3–H3···Br1 <sup>i</sup>   | 0.87        | 2.51          | 3.360 (3)             | 168                     |
| C16–H16···Br1 <sup>i</sup> | 0.94        | 2.87          | 3.784 (4)             | 165                     |
| C6–H6···O2 <sup>ii</sup>   | 0.94        | 2.38          | 3.194 (5)             | 145                     |
| C8–H8···O1 <sup>iii</sup>  | 0.94        | 2.56          | 3.285 (5)             | 134                     |

Symmetry codes: (i)  $-x + \frac{1}{2}, -y + \frac{1}{2}, -z$ ; (ii)  $x + \frac{1}{2}, y + \frac{1}{2}, z$ ; (iii)  $-x + 1, y, -z + \frac{1}{2}$ .

acceptor (Br) site for hydrogen-bonding interactions, which arrange molecules into dimers (Table 1, Fig. 1). Weak hydrogen bonds of the type C–H···O with carbonyl O atoms as acceptor groups play a supporting role in the crystal packing. Nevertheless, these interactions demonstrate a clear discrimination of the C–H binding sites that follow a common pattern. The C–H···O hydrogen bonds present are provided by the 2- and 4-C–H protons of the pyridine ring, which are the most polarized and acidic. Besides C–H···Br interactions, weak slipped  $\pi$ – $\pi$  stacking interactions between pyridine and phenyl rings (symmetry code:  $1 - x, -y, -z$ ) [with a shortest separation of C6···C11( $1 - x, -y, -z$ ) = 3.265 (6) Å, a centroid-to-centroid distance of 3.785 (5) Å and an interplanar angle of 7.1 (3)°] also appear to be involved in the stabilization of the crystal structure (Fig. 2).

## 4. Synthesis and crystallization

Pentacarbonylrhenium(I) bromide (0.1 g, 0.246 mmol) was reacted with 5-phenyl-3-(pyridin-2-yl)-1*H*-1,2,4-triazole (0.1 g, 0.492 mmol) in benzene at 353 K, with stirring, under a steady stream of argon for five h. The dark-yellow solution was removed from the heat and allowed to cool overnight. The yellow product was collected by suction filtration, washed with a 50 ml portion of petroleum ether and dried. Yield = 0.107g,



**Figure 2**  
The crystal structure of the title complex, showing weak hydrogen-bonding interactions (indicated by dotted lines) of the type C–H···O between carbonyl O atoms and pyridyl C–H groups of the organic ligands. [Symmetry codes: (i)  $-x + \frac{1}{2}, -y + \frac{1}{2}, -z$ ; (iii)  $-x + 1, y, -z + \frac{1}{2}$ .]

**Table 2**  
Experimental details.

|   |   |
|---|---|
| Crystal data  |   |
| Chemical formula  | [ReBr(C <sub>13</sub> H <sub>10</sub> N <sub>4</sub> )(CO) <sub>3</sub> ] |
| <i>M<sub>r</sub></i>  | 572.39  |
| Crystal system, space group   | Monoclinic, <i>C2/c</i>   |
| Temperature (K)   | 213   |
| <i>a</i> , <i>b</i> , <i>c</i> (Å)  | 20.8082 (15), 7.2521 (4), 24.386 (2)                                      |
| $\beta$ (°)   | 111.599 (7)   |
| <i>V</i> (Å <sup>3</sup> )  | 3421.5 (4)  |
| <i>Z</i>  | 8   |
| Radiation type  | Mo <i>K</i> $\alpha$  |
| $\mu$ (mm <sup>-1</sup> )   | 9.46  |
| Crystal size (mm)   | 0.14 × 0.12 × 0.11  |
| Data collection   |   |
| Diffractometer  | Stoe Imaging plate diffraction system                                     |
| Absorption correction   | Numerical ( <i>X-RED</i> and <i>X-SHAPE</i> ; Stoe & Cie, 2001)           |
| <i>T</i> <sub>min</sub> , <i>T</i> <sub>max</sub>   | 0.319, 0.385  |
| No. of measured, independent and observed [ <i>I</i> > 2 $\sigma$ ( <i>I</i> )] reflections | 14578, 4092, 2844   |
| <i>R</i> <sub>int</sub>   | 0.057   |
| ( $\sin \theta/\lambda$ ) <sub>max</sub> (Å <sup>-1</sup> )                                 | 0.661   |
| Refinement  |   |
| $R[F^2 > 2\sigma(F^2)]$ , $wR(F^2)$ , <i>S</i>  | 0.023, 0.050, 0.84  |
| No. of reflections  | 4092  |
| No. of parameters   | 226   |
| H-atom treatment  | H-atom parameters constrained   |
| $\Delta\rho_{\max}$ , $\Delta\rho_{\min}$ (e Å <sup>-3</sup> )                              | 1.03, -1.14   |

Computer programs: *IPDS* (Stoe & Cie, 2001), *SHELXS97* and *SHELXL2014* (Sheldrick, 2008), *DIAMOND* (Brandenburg, 1999) and *WinGX* (Farrugia, 2012).

(76.4%). Crystals suitable for X-ray diffraction were obtained by slow diffusion of hexane into a methanol solution of the complex. IR (KBr, cm<sup>-1</sup>):  $\nu_{\text{as}}(\text{CO})$  2028 (*s*),  $\nu_{\text{s}}(\text{CO})$  1912 (*s*).

## 5. Refinement

Crystal data, data collection and structure refinement details are summarized in Table 2. H atoms were positioned with

idealized geometry and were refined with C–H = 0.94, N–H = 0.87 Å and  $U_{\text{iso}}(\text{H}) = 1.2U_{\text{eq}}(\text{C,N})$ .

## Acknowledgements

This work was supported by the fund ‘Grant for Science Research’ (No. 0111U000111) from the Ministry of Education and Science of Ukraine. We thank the Taurida National V. I. Vernadsky University, Crimea, Ukraine, for providing the ligand.

## References

- Alberto, R., Schibli, R., Waibel, R., Abram, U. & Schubiger, A. P. (1999). *Coord. Chem. Rev.* **901**, 190–192.
- Baggaley, E., Weinstein, J. A. & Williams, J. A. G. (2012). *Coord. Chem. Rev.* **256**, 1762–1785.
- Brandenburg, K. (1999). *DIAMOND*. Crystal Impact GbR, Bonn, Germany.
- Clède, S., Lambert, F., Sandt, C., Gueroui, Z., Réfrégiers, M., Plamont, M.-A., Dumas, P., Vessières, A. & Policar, C. (2012). *Chem. Commun.* **48**, 7729–7731.
- Coogan, M. P. & Fernandez-Moreira, V. (2014). *Chem. Commun.* **50**, 384–399.
- Farrugia, L. J. (2012). *J. Appl. Cryst.* **45**, 849–854.
- Hildebrandt, P. (2010). *Angew. Chem. Int. Ed.* **49**, 4540–4541.
- Lo, K. K.-W., Choi, A. W.-T. & Law, W. H.-T. (2012). *Dalton Trans.* **41**, 6021–6047.
- Policar, C., Waern, J. B., Plamont, M. A., Clède, S., Mayet, C., Prazeres, R., Ortega, J.-M., Vessières, A. & Dazzi, A. (2011). *Angew. Chem. Int. Ed.* **50**, 860–864.
- Rajendran, T., Manimaran, B., Lee, F.-Y., Lee, G.-H., Peng, S.-M., Wang, C.-C. & Lu, K.-L. (2000). *Inorg. Chem.* **39**, 2016–2017.
- Sheldrick, G. M. (2008). *Acta Cryst. A* **64**, 112–122.
- Stoe & Cie (2001). *X-SHAPE*, *X-RED* and *IPDS*. Stoe & Cie GmbH, Darmstadt, Germany.
- Striplin, D. R. & Crosby, G. A. (2001). *Coord. Chem. Rev.* **211**, 163–175.
- Stufkens, D. J. & Vlček, A. Jr (1998). *Coord. Chem. Rev.* **177**, 127–179.
- Volkert, W. A. & Hoffman, T. J. (1999). *Chem. Rev.* **99**, 2269–2292.
- Wrighton, M. & Morse, D. L. (1974). *J. Am. Chem. Soc.* **96**, 998–1003.
- Xiang, H., Cheng, J., Ma, X., Zhou, X. & Chruma, J. J. (2013). *Chem. Soc. Rev.* **42**, 6128–6185.

## supporting information

*Acta Cryst.* (2014). E70, 587-589 [doi:10.1107/S1600536814025604]

## Crystal structure of bromido-*fac*-tricarbonyl[5-phenyl-3-(pyridin-2-yl)-1*H*-1,2,4-triazole- $\kappa^2$ N,N']rhenium(I)

Kseniia Piletska, Konstantin V. Domasevitch and Alexander V. Shtemenko

### Computing details

Data collection: *IPDS* (Stoe & Cie, 2001); cell refinement: *IPDS* (Stoe & Cie, 2001); data reduction: *IPDS* (Stoe & Cie, 2001); program(s) used to solve structure: *SHELXS97* (Sheldrick, 2008); program(s) used to refine structure: *SHELXL2014* (Sheldrick, 2008); molecular graphics: *DIAMOND* (Brandenburg, 1999); software used to prepare material for publication: *WinGX* (Farrugia, 2012).

### Bromido-*fac*-tricarbonyl[5-phenyl-3-(pyridin-2-yl)-1*H*-1,2,4-triazole- $\kappa^2$ N,N']rhenium(I)

#### Crystal data

[ReBr(C<sub>13</sub>H<sub>10</sub>N<sub>4</sub>)(CO)<sub>3</sub>]

$M_r = 572.39$

Monoclinic, *C2/c*

$a = 20.8082$  (15) Å

$b = 7.2521$  (4) Å

$c = 24.386$  (2) Å

$\beta = 111.599$  (7)°

$V = 3421.5$  (4) Å<sup>3</sup>

$Z = 8$

$F(000) = 2144$

$D_x = 2.222$  Mg m<sup>-3</sup>

Mo  $K\alpha$  radiation,  $\lambda = 0.71073$  Å

Cell parameters from 8000 reflections

$\theta = 3.0$ – $28.0$ °

$\mu = 9.46$  mm<sup>-1</sup>

$T = 213$  K

Prism, yellow

$0.14 \times 0.12 \times 0.11$  mm

#### Data collection

Stoe Imaging plate diffraction system  
diffractometer

Radiation source: fine-focus sealed tube

$\varphi$  oscillation scans

Absorption correction: numerical

(*X-RED* and *X-SHAPE*; Stoe & Cie, 2001)

$T_{\min} = 0.319$ ,  $T_{\max} = 0.385$

14578 measured reflections

4092 independent reflections

2844 reflections with  $I > 2\sigma(I)$

$R_{\text{int}} = 0.057$

$\theta_{\max} = 28.0$ °,  $\theta_{\min} = 3.0$ °

$h = -27 \rightarrow 27$

$k = -9 \rightarrow 8$

$l = -32 \rightarrow 32$

#### Refinement

Refinement on  $F^2$

Least-squares matrix: full

$R[F^2 > 2\sigma(F^2)] = 0.023$

$wR(F^2) = 0.050$

$S = 0.84$

4092 reflections

226 parameters

0 restraints

Primary atom site location: structure-invariant  
direct methods

Secondary atom site location: difference Fourier  
map

Hydrogen site location: inferred from  
neighbouring sites

H-atom parameters constrained

$w = 1/[\sigma^2(F_o^2) + (0.0225P)^2]$

where  $P = (F_o^2 + 2F_c^2)/3$

$(\Delta/\sigma)_{\max} = 0.001$

$\Delta\rho_{\max} = 1.03$  e Å<sup>-3</sup>

$\Delta\rho_{\min} = -1.14$  e Å<sup>-3</sup>

*Special details*

**Geometry.** All e.s.d.'s (except the e.s.d. in the dihedral angle between two l.s. planes) are estimated using the full covariance matrix. The cell e.s.d.'s are taken into account individually in the estimation of e.s.d.'s in distances, angles and torsion angles; correlations between e.s.d.'s in cell parameters are only used when they are defined by crystal symmetry. An approximate (isotropic) treatment of cell e.s.d.'s is used for estimating e.s.d.'s involving l.s. planes.

*Fractional atomic coordinates and isotropic or equivalent isotropic displacement parameters ( $\text{\AA}^2$ )*

|     | <i>x</i>     | <i>y</i>    | <i>z</i>      | $U_{\text{iso}}^*/U_{\text{eq}}$ |
|-----|--------------|-------------|---------------|----------------------------------|
| Re1 | 0.38382 (2)  | 0.25265 (3) | 0.10559 (2)   | 0.02798 (5)                      |
| Br1 | 0.32731 (2)  | 0.54427 (7) | 0.04146 (2)   | 0.03557 (11)                     |
| O1  | 0.40827 (17) | 0.4654 (6)  | 0.21974 (13)  | 0.0594 (10)                      |
| O2  | 0.24980 (15) | 0.1146 (5)  | 0.11477 (13)  | 0.0516 (10)                      |
| O3  | 0.4540 (2)   | -0.0838 (7) | 0.17525 (18)  | 0.0796 (14)                      |
| N1  | 0.48045 (14) | 0.3439 (5)  | 0.09681 (13)  | 0.0264 (7)                       |
| N2  | 0.38108 (14) | 0.1420 (5)  | 0.02237 (12)  | 0.0244 (7)                       |
| N3  | 0.33622 (14) | 0.0546 (5)  | -0.02600 (12) | 0.0258 (7)                       |
| H3  | 0.2960       | 0.0108      | -0.0295       | 0.031*                           |
| N4  | 0.42685 (15) | 0.1255 (5)  | -0.04749 (13) | 0.0255 (7)                       |
| C1  | 0.3988 (2)   | 0.3830 (7)  | 0.17704 (17)  | 0.0372 (12)                      |
| C2  | 0.2983 (2)   | 0.1674 (7)  | 0.10904 (15)  | 0.0361 (11)                      |
| C3  | 0.4289 (2)   | 0.0391 (9)  | 0.14970 (19)  | 0.0463 (13)                      |
| C4  | 0.49040 (18) | 0.2879 (5)  | 0.04763 (16)  | 0.0246 (9)                       |
| C5  | 0.54965 (18) | 0.3314 (7)  | 0.03688 (17)  | 0.0297 (9)                       |
| H5  | 0.5554       | 0.2910      | 0.0024        | 0.036*                           |
| C6  | 0.59958 (19) | 0.4352 (7)  | 0.07811 (18)  | 0.0341 (10)                      |
| H6  | 0.6407       | 0.4653      | 0.0725        | 0.041*                           |
| C7  | 0.58898 (19) | 0.4942 (6)  | 0.12745 (18)  | 0.0347 (10)                      |
| H7  | 0.6225       | 0.5668      | 0.1557        | 0.042*                           |
| C8  | 0.5289 (2)   | 0.4467 (7)  | 0.13551 (17)  | 0.0340 (10)                      |
| H8  | 0.5220       | 0.4883      | 0.1694        | 0.041*                           |
| C9  | 0.43441 (18) | 0.1817 (6)  | 0.00714 (16)  | 0.0258 (8)                       |
| C10 | 0.36475 (18) | 0.0474 (6)  | -0.06765 (15) | 0.0246 (8)                       |
| C11 | 0.33235 (18) | -0.0329 (6) | -0.12595 (15) | 0.0268 (9)                       |
| C12 | 0.3677 (2)   | -0.0228 (7) | -0.16469 (17) | 0.0337 (10)                      |
| H12 | 0.4104       | 0.0389      | -0.1534       | 0.040*                           |
| C13 | 0.3397 (3)   | -0.1037 (7) | -0.21942 (18) | 0.0426 (12)                      |
| H13 | 0.3636       | -0.0967     | -0.2454       | 0.051*                           |
| C14 | 0.2775 (3)   | -0.1946 (7) | -0.23681 (19) | 0.0448 (12)                      |
| H14 | 0.2592       | -0.2506     | -0.2741       | 0.054*                           |
| C15 | 0.2425 (2)   | -0.2025 (7) | -0.19894 (19) | 0.0403 (12)                      |
| H15 | 0.1998       | -0.2636     | -0.2106       | 0.048*                           |
| C16 | 0.2693 (2)   | -0.1219 (7) | -0.14401 (18) | 0.0369 (11)                      |
| H16 | 0.2446       | -0.1276     | -0.1187       | 0.044*                           |

*Atomic displacement parameters (Å<sup>2</sup>)*

|     | $U^{11}$     | $U^{22}$     | $U^{33}$     | $U^{12}$     | $U^{13}$     | $U^{23}$     |
|-----|--------------|--------------|--------------|--------------|--------------|--------------|
| Re1 | 0.02700 (7)  | 0.03224 (11) | 0.02386 (7)  | -0.00874 (8) | 0.00836 (5)  | 0.00069 (8)  |
| Br1 | 0.03230 (18) | 0.0375 (3)   | 0.03867 (19) | -0.0024 (2)  | 0.01516 (15) | 0.0035 (2)   |
| O1  | 0.068 (2)    | 0.075 (3)    | 0.0338 (16)  | -0.021 (2)   | 0.0179 (15)  | -0.0196 (19) |
| O2  | 0.0364 (15)  | 0.077 (3)    | 0.0440 (17)  | -0.0237 (18) | 0.0178 (13)  | -0.0038 (18) |
| O3  | 0.081 (3)    | 0.071 (4)    | 0.079 (3)    | 0.009 (3)    | 0.020 (2)    | 0.034 (3)    |
| N1  | 0.0216 (14)  | 0.022 (2)    | 0.0309 (15)  | -0.0032 (15) | 0.0036 (12)  | 0.0023 (15)  |
| N2  | 0.0224 (14)  | 0.019 (2)    | 0.0291 (15)  | -0.0061 (14) | 0.0071 (12)  | 0.0002 (14)  |
| N3  | 0.0250 (14)  | 0.023 (2)    | 0.0270 (14)  | -0.0053 (15) | 0.0074 (11)  | -0.0012 (15) |
| N4  | 0.0240 (14)  | 0.018 (2)    | 0.0350 (16)  | -0.0011 (14) | 0.0116 (12)  | 0.0018 (15)  |
| C1  | 0.032 (2)    | 0.049 (4)    | 0.0275 (19)  | -0.009 (2)   | 0.0074 (15)  | 0.004 (2)    |
| C2  | 0.036 (2)    | 0.047 (3)    | 0.0221 (17)  | -0.013 (2)   | 0.0068 (15)  | -0.0053 (19) |
| C3  | 0.041 (2)    | 0.053 (4)    | 0.043 (2)    | -0.007 (3)   | 0.0144 (19)  | 0.017 (3)    |
| C4  | 0.0250 (16)  | 0.015 (3)    | 0.0322 (17)  | 0.0002 (15)  | 0.0084 (13)  | 0.0071 (15)  |
| C5  | 0.0245 (17)  | 0.023 (3)    | 0.042 (2)    | 0.0009 (18)  | 0.0128 (16)  | 0.009 (2)    |
| C6  | 0.0243 (18)  | 0.021 (3)    | 0.052 (2)    | -0.0034 (19) | 0.0086 (17)  | 0.014 (2)    |
| C7  | 0.0268 (18)  | 0.018 (3)    | 0.047 (2)    | -0.0065 (18) | -0.0005 (16) | 0.009 (2)    |
| C8  | 0.038 (2)    | 0.024 (3)    | 0.0353 (19)  | -0.007 (2)   | 0.0078 (16)  | -0.003 (2)   |
| C9  | 0.0266 (17)  | 0.016 (2)    | 0.0354 (19)  | 0.0016 (17)  | 0.0123 (15)  | 0.0062 (17)  |
| C10 | 0.0298 (18)  | 0.013 (2)    | 0.0293 (17)  | 0.0031 (17)  | 0.0089 (14)  | 0.0020 (17)  |
| C11 | 0.0324 (19)  | 0.018 (3)    | 0.0287 (17)  | 0.0041 (18)  | 0.0099 (15)  | -0.0024 (17) |
| C12 | 0.044 (2)    | 0.022 (3)    | 0.037 (2)    | 0.005 (2)    | 0.0161 (17)  | 0.0047 (19)  |
| C13 | 0.065 (3)    | 0.030 (3)    | 0.039 (2)    | 0.012 (2)    | 0.025 (2)    | 0.002 (2)    |
| C14 | 0.066 (3)    | 0.030 (3)    | 0.033 (2)    | 0.002 (2)    | 0.012 (2)    | -0.008 (2)   |
| C15 | 0.048 (2)    | 0.027 (4)    | 0.041 (2)    | -0.006 (2)   | 0.0107 (19)  | -0.013 (2)   |
| C16 | 0.037 (2)    | 0.033 (3)    | 0.042 (2)    | 0.001 (2)    | 0.0155 (18)  | -0.008 (2)   |

*Geometric parameters (Å, °)*

|         |            |         |           |
|---------|------------|---------|-----------|
| Re1—C1  | 1.905 (4)  | C5—C6   | 1.374 (6) |
| Re1—C2  | 1.915 (4)  | C5—H5   | 0.9400    |
| Re1—C3  | 1.922 (6)  | C6—C7   | 1.369 (6) |
| Re1—N2  | 2.164 (3)  | C6—H6   | 0.9400    |
| Re1—N1  | 2.201 (3)  | C7—C8   | 1.380 (5) |
| Re1—Br1 | 2.6357 (5) | C7—H7   | 0.9400    |
| O1—C1   | 1.153 (5)  | C8—H8   | 0.9400    |
| O2—C2   | 1.135 (4)  | C10—C11 | 1.453 (5) |
| O3—C3   | 1.103 (6)  | C11—C16 | 1.380 (6) |
| N1—C8   | 1.327 (5)  | C11—C12 | 1.397 (5) |
| N1—C4   | 1.352 (5)  | C12—C13 | 1.376 (6) |
| N2—C9   | 1.325 (4)  | C12—H12 | 0.9400    |
| N2—N3   | 1.361 (4)  | C13—C14 | 1.373 (7) |
| N3—C10  | 1.353 (4)  | C13—H13 | 0.9400    |
| N3—H3   | 0.8700     | C14—C15 | 1.371 (6) |
| N4—C10  | 1.328 (5)  | C14—H14 | 0.9400    |
| N4—C9   | 1.346 (5)  | C15—C16 | 1.377 (6) |

|               |             |                |            |
|---------------|-------------|----------------|------------|
| C4—C5         | 1.388 (5)   | C15—H15        | 0.9400     |
| C4—C9         | 1.442 (5)   | C16—H16        | 0.9400     |
| C1—Re1—C2     | 87.78 (17)  | C7—C6—C5       | 119.4 (3)  |
| C1—Re1—C3     | 90.4 (2)    | C7—C6—H6       | 120.3      |
| C2—Re1—C3     | 89.18 (19)  | C5—C6—H6       | 120.3      |
| C1—Re1—N2     | 168.91 (15) | C6—C7—C8       | 119.7 (4)  |
| C2—Re1—N2     | 102.56 (14) | C6—C7—H7       | 120.2      |
| C3—Re1—N2     | 93.71 (18)  | C8—C7—H7       | 120.2      |
| C1—Re1—N1     | 95.31 (14)  | N1—C8—C7       | 122.0 (4)  |
| C2—Re1—N1     | 176.88 (13) | N1—C8—H8       | 119.0      |
| C3—Re1—N1     | 91.22 (15)  | C7—C8—H8       | 119.0      |
| N2—Re1—N1     | 74.33 (11)  | N2—C9—N4       | 114.0 (3)  |
| C1—Re1—Br1    | 91.81 (14)  | N2—C9—C4       | 118.2 (3)  |
| C2—Re1—Br1    | 93.80 (15)  | N4—C9—C4       | 127.6 (3)  |
| C3—Re1—Br1    | 176.38 (12) | N4—C10—N3      | 110.0 (3)  |
| N2—Re1—Br1    | 83.63 (9)   | N4—C10—C11     | 124.8 (3)  |
| N1—Re1—Br1    | 85.69 (9)   | N3—C10—C11     | 125.2 (3)  |
| C8—N1—C4      | 118.4 (3)   | C16—C11—C12    | 118.9 (4)  |
| C8—N1—Re1     | 125.5 (3)   | C16—C11—C10    | 122.9 (3)  |
| C4—N1—Re1     | 116.1 (2)   | C12—C11—C10    | 118.1 (3)  |
| C9—N2—N3      | 103.7 (3)   | C13—C12—C11    | 119.6 (4)  |
| C9—N2—Re1     | 116.5 (3)   | C13—C12—H12    | 120.2      |
| N3—N2—Re1     | 139.3 (2)   | C11—C12—H12    | 120.2      |
| C10—N3—N2     | 108.5 (3)   | C14—C13—C12    | 121.3 (4)  |
| C10—N3—H3     | 125.7       | C14—C13—H13    | 119.4      |
| N2—N3—H3      | 125.7       | C12—C13—H13    | 119.4      |
| C10—N4—C9     | 103.8 (3)   | C15—C14—C13    | 119.0 (4)  |
| O1—C1—Re1     | 178.4 (4)   | C15—C14—H14    | 120.5      |
| O2—C2—Re1     | 175.6 (3)   | C13—C14—H14    | 120.5      |
| O3—C3—Re1     | 179.0 (4)   | C14—C15—C16    | 120.8 (4)  |
| N1—C4—C5      | 122.4 (4)   | C14—C15—H15    | 119.6      |
| N1—C4—C9      | 114.8 (3)   | C16—C15—H15    | 119.6      |
| C5—C4—C9      | 122.8 (3)   | C15—C16—C11    | 120.4 (4)  |
| C6—C5—C4      | 118.1 (4)   | C15—C16—H16    | 119.8      |
| C6—C5—H5      | 120.9       | C11—C16—H16    | 119.8      |
| C4—C5—H5      | 120.9       |                |            |
| C9—N2—N3—C10  | -0.3 (4)    | C5—C4—C9—N2    | 177.7 (4)  |
| Re1—N2—N3—C10 | 170.7 (3)   | N1—C4—C9—N4    | 172.3 (4)  |
| C8—N1—C4—C5   | 1.1 (6)     | C5—C4—C9—N4    | -7.0 (7)   |
| Re1—N1—C4—C5  | -178.5 (3)  | C9—N4—C10—N3   | -0.7 (5)   |
| C8—N1—C4—C9   | -178.2 (4)  | C9—N4—C10—C11  | 179.0 (4)  |
| Re1—N1—C4—C9  | 2.2 (4)     | N2—N3—C10—N4   | 0.7 (5)    |
| N1—C4—C5—C6   | 0.0 (6)     | N2—N3—C10—C11  | -179.1 (4) |
| C9—C4—C5—C6   | 179.3 (4)   | N4—C10—C11—C16 | 176.3 (4)  |
| C4—C5—C6—C7   | -1.0 (6)    | N3—C10—C11—C16 | -4.0 (7)   |
| C5—C6—C7—C8   | 0.9 (7)     | N4—C10—C11—C12 | -2.2 (6)   |

|              |            |                 |            |
|--------------|------------|-----------------|------------|
| C4—N1—C8—C7  | -1.3 (6)   | N3—C10—C11—C12  | 177.5 (4)  |
| Re1—N1—C8—C7 | 178.3 (3)  | C16—C11—C12—C13 | -1.0 (7)   |
| C6—C7—C8—N1  | 0.3 (7)    | C10—C11—C12—C13 | 177.5 (4)  |
| N3—N2—C9—N4  | -0.1 (5)   | C11—C12—C13—C14 | 0.0 (7)    |
| Re1—N2—C9—N4 | -173.6 (3) | C12—C13—C14—C15 | 0.8 (7)    |
| N3—N2—C9—C4  | 175.8 (3)  | C13—C14—C15—C16 | -0.5 (7)   |
| Re1—N2—C9—C4 | 2.3 (5)    | C14—C15—C16—C11 | -0.5 (7)   |
| C10—N4—C9—N2 | 0.5 (5)    | C12—C11—C16—C15 | 1.2 (7)    |
| C10—N4—C9—C4 | -174.9 (4) | C10—C11—C16—C15 | -177.1 (4) |
| N1—C4—C9—N2  | -3.0 (5)   |                 |            |

Hydrogen-bond geometry (Å, °)

| <i>D</i> —H... <i>A</i>    | <i>D</i> —H | H... <i>A</i> | <i>D</i> ... <i>A</i> | <i>D</i> —H... <i>A</i> |
|----------------------------|-------------|---------------|-----------------------|-------------------------|
| N3—H3...Br1 <sup>i</sup>   | 0.87        | 2.51          | 3.360 (3)             | 168                     |
| C16—H16...Br1 <sup>i</sup> | 0.94        | 2.87          | 3.784 (4)             | 165                     |
| C6—H6...O2 <sup>ii</sup>   | 0.94        | 2.38          | 3.194 (5)             | 145                     |
| C8—H8...O1 <sup>iii</sup>  | 0.94        | 2.56          | 3.285 (5)             | 134                     |

Symmetry codes: (i)  $-x+1/2, -y+1/2, -z$ ; (ii)  $x+1/2, y+1/2, z$ ; (iii)  $-x+1, y, -z+1/2$ .