

IEEE REVIEWS IN BIOMEDICAL ENGINEERING

A PUBLICATION OF THE IEEE ENGINEERING IN MEDICINE AND BIOLOGY SOCIETY



TECHNICALLY COSPONSORED BY
THE IEEE CIRCUITS AND SYSTEMS SOCIETY
THE IEEE COMMUNICATIONS SOCIETY
THE IEEE CONSUMER ELECTRONICS SOCIETY
THE IEEE SIGNAL PROCESSING SOCIETY
THE IEEE ULTRASONICS, FERROELECTRICS, AND FREQUENCY CONTROL SOCIETY

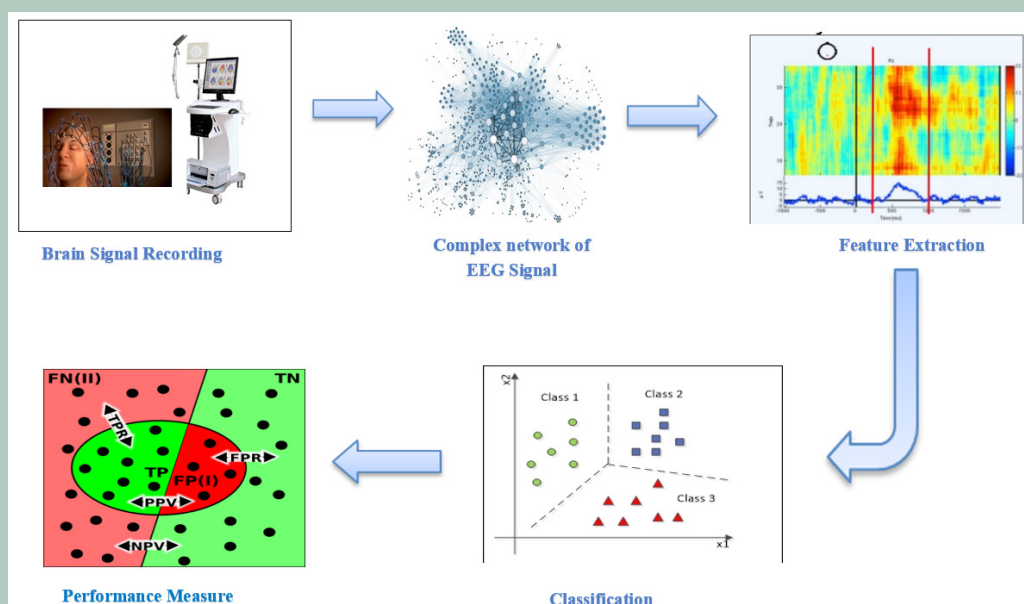


2023

VOLUME 16

IRBECCO

(ISSN 1937-3333)



Schematic representation of general sequence of steps followed by graph theory based approaches for epileptic seizure detection from brain EEG signals. Image and full caption available from Supriya et al.,



Indexed in the National Library of Medicine, PubMed®, and MEDLINE

