

Review

Chromatographic Studies of Protein-Based Chiral Separations

Cong Bi, Xiwei Zheng, Shiden Azaria, Sandya Beeram, Zhao Li and David S. Hage *

Department of Chemistry, University of Nebraska-Lincoln, Lincoln, NE 68588-0304, USA; cbi@huskers.unl.edu (C.B.); xiwei@huskers.unl.edu (X.Z.); shiden@huskers.unl.edu (S.A.); sbeeram@huskers.unl.edu (S.B.); zli10@huskers.unl.edu (Z.L.)

* Correspondence: dhage1@unl.edu; Tel.: +1-402-472-2744; Fax: +1-402-472-9402

Academic Editor: W John Lough

Received: 12 June 2016; Accepted: 12 August 2016; Published: 5 September 2016

Abstract: The development of separation methods for the analysis and resolution of chiral drugs and solutes has been an area of ongoing interest in pharmaceutical research. The use of proteins as chiral binding agents in high-performance liquid chromatography (HPLC) has been an approach that has received particular attention in such work. This report provides an overview of proteins that have been used as binding agents to create chiral stationary phases (CSPs) and in the use of chromatographic methods to study these materials and protein-based chiral separations. The supports and methods that have been employed to prepare protein-based CSPs will also be discussed and compared. Specific types of CSPs that are considered include those that employ serum transport proteins (e.g., human serum albumin, bovine serum albumin, and α_1 -acid glycoprotein), enzymes (e.g., penicillin G acylase, cellobiohydrolases, and α -chymotrypsin) or other types of proteins (e.g., ovomucoid, antibodies, and avidin or streptavidin). The properties and applications for each type of protein and CSP will also be discussed in terms of their use in chromatography and chiral separations.

Keywords: chiral high-performance liquid chromatography (HPLC); protein-based chiral stationary phases; chiral recognition; chromatographic studies of drug-protein interactions; frontal analysis; zonal elution

1. Introduction

The use of molecular chirality can be traced back to the mid-1800s in the work by Louis Pasteur with tartaric acid [1–3]. In the late 1970s, Yoshio Okamoto synthesized a helical polymer of triphenylmethyl methacrylate and used this material to develop chromatographic columns that could be used for chiral separations [4]. Since that time, significant effort has been aimed at creating chiral stationary phases (CSPs) that can be used in chromatography for the separation and analysis of chiral compounds [3–9].

Many pharmaceutical agents are chiral molecules [7,10–13]. Although these compounds are often sold as racemic mixtures, about two-thirds of the drugs that are currently available commercially are chiral [7,14]. Even though the two enantiomers of a drug will have most of the same physical properties, they may vary significantly in how they interact with a biological system, possibly leading to different levels of activity or side effects [10,11,15]. For example, *S*-ibuprofen is over 100 times more potent than *R*-ibuprofen at cyclooxygenase 1 and 2 inhibition, and *R*-thalidomide is a sedative while *S*-thalidomide is a teratogen. In addition, the *S*-enantiomers of barbiturates such as pentobarbital, hexobarbital, and mephobarbital are sedatives/hypnotics while the *R*-enantiomers tend to be inactive [10,15]. These differences have made it necessary to provide pure enantiomers in pharmaceutical formulations and/or to determine the effects the separate enantiomers may have in the body [7,9]. This, in turn,

has led to the need for analytical methods and preparative techniques that can be used to analyze and separate chiral compounds in pharmaceutical samples [7,9].

Several methods have been employed for the chiral separation of drugs and amino acids for chemical analysis. These methods have included gas chromatography, thin layer chromatography, high-performance liquid chromatography (HPLC), supercritical fluid chromatography, and capillary electrophoresis [6,9,16–18]. Methods based on HPLC have been of particular interest [6,9,17–19]. Many types of stereoselective binding agents have been used to prepare CSPs for HPLC. The use of these agents in a liquid chromatographic system can be viewed as a type of affinity chromatography or high-performance affinity chromatography (HPAC) [3–9]. Examples of such binding agents have included proteins, polysaccharides, macrocyclic antibiotics, and ion-exchange ligands, among others [5,6,17,19–21].

Many proteins have the potential to discriminate between the separate forms of a chiral compound. This is the case because proteins are also chiral in nature in terms of both their primary structure (i.e., being made of L-amino acids) and their secondary or higher order structures [17]. Various types of proteins have been immobilized and used to make CSPs for HPLC, ranging from enzymes to serum transport proteins and glycoproteins. Some common examples of these proteins are shown in Table 1 [17,18,20–26]. These separations are performed based on differences in the binding strength and amount or number of binding sites for chiral compounds with the protein [3]. Advantages of using protein-based CSPs include their tendency to be able to work with a broad range of chiral compounds, their ability to be used with aqueous mobile phases, and their ability to directly analyze most chiral compounds without the need for derivation [17,19,22,27]. However, protein-based CSPs can also have a low loading capacity, be expensive to prepare, and have limited stability, which makes these of greater interest for analytical work than for preparative separations [17,19,28,29].

Table 1. Examples of proteins that have been used as chiral stationary phases for liquid chromatography
^a. pI: isoelectric point; CBH: cellobiohydrolase.

Type of Protein	Molecular Mass (kDa)	Isoelectric Point, pI
<i>Serum transport protein</i>		
α_1 -Acid glycoprotein (AGP)	41	2.7
Human serum albumin (HSA)	66	4.7
Bovine serum albumin (BSA)	66.5	4.7–4.9
<i>Enzymes</i>		
Cellobiohydrolases		
CBH I	60–70	3.9
CBH II		
α -Chymotrypsin	25	8.1–8.3
Lysozyme	14	11
Penicillin G acylase	90	6.4
<i>Other proteins</i>		
Antibodies (e.g., immunoglobulin G)	~150	4.4–10
Avidin	68	10
Ovomucoid	28.8	3.9–4.5
Streptavidin	60	5

^a This table is based on information that was obtained from Refs. [18,23,24].

This review will discuss how chromatographic methods have been used to examine and characterize protein-based chiral separations. Tools that have been used in such work will first be considered, including zonal elution, frontal analysis, and kinetic methods of analysis. Methods and supports that have been employed for preparing protein-based CSPs will then be considered. The properties and applications for several specific types of protein-based CSPs will then be examined. This will include CSPs that employ various types of serum transport proteins and enzymes, as well as

binding agents such as antibodies and avidin/streptavidin. The relative advantages for each type of CSP will be discussed, along with information that has been obtained through chromatography on these materials and their ability to bind and separate chiral agents.

2. Chromatographic Methods Used to Study Protein-Based Chiral Separations

2.1. Zonal Elution

Zonal elution has been widely used in HPLC-based chiral separations [30–32]. This method can also be employed to measure the separation factors and resolution of solutes on CSPs (see Figure 1) [33–35]. Another use of zonal elution is to obtain information on the interactions between an injected solute and an immobilized protein. This approach can provide information on the strength of solute–protein binding, the changes in binding that occur as the mobile phase composition or temperature is changed, the location and types of binding sites for the solute on the protein, and the effect of altering the solute or protein structures on the interactions of these agents [32,36,37]. Zonal elution can be used to provide this information when a small amount of the solute of interest is injected onto a protein-based CSP in the presence of a competing agent or a mobile phase with a known composition and temperature. The retention factor for the solute is then measured and the change in this value is examined as the conditions used within the column are varied [38,39].

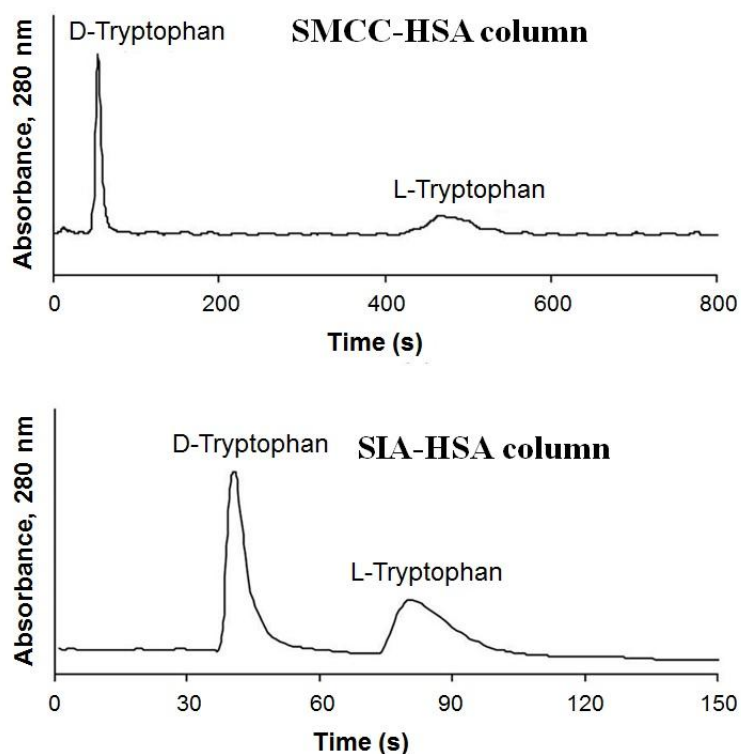


Figure 1. Chromatograms obtained by zonal elution for the chiral separation of D- and L-tryptophan on high-performance liquid chromatography (HPLC) columns containing human serum albumin (HSA) immobilized to sulfhydryl-reactive silica that had been activated by using succinimidyl 4-(*N*-maleimidomethyl) cyclohexane-carboxylate (SMCC) or succinimidyl iodoacetate (SIC). Reproduced with permission from [35]. Copyright American Chemical Society, 2007.

For a solute or analyte (A) that is injected onto a column that contains an immobilized protein, the retention factor for the analyte (k) can be related to the number of binding sites for the analyte on the protein and the equilibrium constants for the analyte at these sites. Equation (1) is an example of

this relationship for a protein-based CSP with a series of independent binding sites (1 through n) for the analyte [40].

$$k = (K_{A1}n_1 + \dots + K_{An}n_n) m_L / V_M \quad (1)$$

In this equation, the terms K_{A1} through K_{An} are the association equilibrium constants for the analyte at each type of binding site in the column, n_1 through n_n represent the relative amount or moles for each type of site, m_L is the total moles of binding sites that are present, and V_M is the column void volume. According to Equation (1), the retention of the analyte can provide both qualitative and quantitative information on a solute–protein interaction. This includes the relative amount of active binding sites in the column (i.e., m_L / V_M) and the overall binding strength of these sites (i.e., $K_{A1}n_1 + \dots + K_{An}n_n$) [32]. The advantages of using zonal elution to obtain this data include its need for only a small amount of the analyte and its ability in some cases to study more than one analyte per injection [39]. In addition, this method can be used with standard HPLC systems and often requires only short analysis times [39].

Another application of zonal elution has involved the development of quantitative structure-retention relationships (QSRRs) that characterize the binding of drugs and other solutes to protein-based CSPs [41–43]. In this type of study, a set of retention parameters are acquired for a series of analytes and compared to various structural descriptors for these solutes to see which of these factors influence retention [42]. The resulting QSRRs can then be used to predict the retention of a related solute, to investigate the molecular mechanism of the chiral separation, or to compare the retention properties of CSPs [42]. Specific applications of this approach have involved its use to examine the retention of benzodiazepine derivatives on human serum albumin (HSA) columns [43], to study the stereoselective separations of chiral solutes on a bovine serum albumin (BSA) column, and to characterize the chiral recognition of columns produced with BSA fragments [41].

Competitive binding studies can be used in zonal elution to determine which types of sites are binding to a given form of a drug and to estimate the equilibrium constants at these individual sites [34,44–47]. In this approach, a small amount of the analyte is injected onto a column that contains a protein (or other type of binding agent) and in the presence of mobile phases that have various known concentrations of a competing agent, I [34,44,45]. The retention factor observed for the analyte (k_A) should change as the concentration of the competing agent, [I], is varied if both A and I are binding to the same sites in the column. For instance, Equation (2) shows how k_A will change with [I] for a system in which A and I have competition at a single type of site and A has no other sites in the column [34,44,45]:

$$\frac{1}{k_A} = \frac{K_I V_M [I]}{K_A m_{Ltot}} + \frac{V_M}{K_A m_{Ltot}} \quad (2)$$

In this equation, K_I or K_A is the association equilibrium constant for the binding of I or A at their common site, and m_{Ltot} is the total moles of active binding sites at which A and I compete [34,44,45]. This method has been used to examine the interactions between D- and L-tryptophan on HSA, as well as the interactions between these amino acid enantiomers and R-warfarin [45]. Related equations have been employed to examine multisite binding and allosteric interactions between drug enantiomers and other drugs or solutes on HSA columns [44,48–52].

Another use of zonal elution has been to evaluate the efficiency of protein-based CSPs, as can be done through band-broadening measurements [53–58]. It has been found that the efficiency of these columns can be affected by factors such as temperature, the amount of immobilized protein, the flow rate, and the mobile phase composition [53–57]. This approach has been used with HSA monoliths to study and optimize the chiral separation of R- and S-warfarin or D- and L-tryptophan [54,56]. This approach has also been utilized to examine the chiral separation for R- and S-warfarin or R- and S-propranolol on various columns containing alpha₁-acid glycoprotein (AGP) [54,56].

2.2. Frontal Analysis

Frontal analysis is another chromatographic approach that has been used to examine the chiral interactions of drugs and other solutes with proteins [31,33,59]. In this method, a solution containing a known concentration of an analyte is continuously applied to a column that contains an immobilized protein or binding agent. The amount of the analyte that passes through the column is then monitored as a function of the amount of time or mobile phase volume that is used for application of the analyte [32,60,61]. As binding sites in the column become occupied by the analyte, a breakthrough curve is observed (see Figure 2) [32,60,61]. This experiment is repeated at several known concentrations of the analyte. If fast association and dissociation are present between the analyte and the protein, the mean position of each breakthrough curve (i.e., the breakthrough time or volume) can be used to obtain information on the thermodynamics of the interaction. This is done by fitting the results to binding models, such as those given in Equations (3) and (4) [32,62,63]:

$$m_{Lapp} = \frac{m_{Ltot} K_a [A]}{1 + K_a [A]} \quad (3)$$

$$m_{Lapp} = \frac{m_{L1} K_{a1} [A]}{1 + K_{a1} [A]} + \frac{m_{L2} K_{a2} [A]}{1 + K_{a2} [A]} \quad (4)$$

Equation (3) describes the interaction of analyte A with a single type of saturable binding site, in which m_{Ltot} is the total moles of binding sites that are present for the analyte, and K_a is the association equilibrium constant for the analyte at these sites [32,60,61]. Equation (4) applies to a case in which the column contains two groups of saturable sites for the analyte. In this latter situation, m_{L1} and m_{L2} are the total moles of sites 1 and 2, respectively, and K_{a1} and K_{a2} are the association equilibrium constants for the analyte at these sites [32,60,61]. Such models have been applied in the investigation of the equilibrium constants and number of binding sites for many chiral drugs with proteins such as HSA and AGP [34,45,57,64,65]. The same type of approach can be utilized with other binding models, as has been demonstrated in frontal analysis studies that have examined the interactions of R- and S-propranolol with low density lipoprotein and related binding agents [66–69].

An advantage of using frontal analysis to study protein-based CSPs is that this method can simultaneously provide information on both the equilibrium constants and the number of binding sites that are involved in the interaction of a solute with this type of column [32,60,61]. Frontal analysis can also be used with various types of supports and detection methods, including those used in either low- or high-performance liquid chromatography [32]. However, this approach does tend to require a larger amount of solute than zonal elution and often takes longer to perform because of the need for experiments at multiple concentrations of the analyte [32].

To characterize a protein-based CSP, frontal analysis is typically used to study the binding by separate chiral solutes to the column. The information that is obtained for the various chiral forms can be used to examine the retention mechanism and optimize the separation of these forms on the CSP [6,31,57]. Examples of such work include frontal analysis studies that have been conducted with R- and S-warfarin or D- and L-tryptophan on HSA columns (see Figure 2) [57,65]. Frontal analysis was utilized in these two cases to determine the binding strength and amount of binding sites for each enantiomer on the protein-based CSPs. Based on this information, it was possible to predict the behavior of these analytes during chiral separations [57,65].

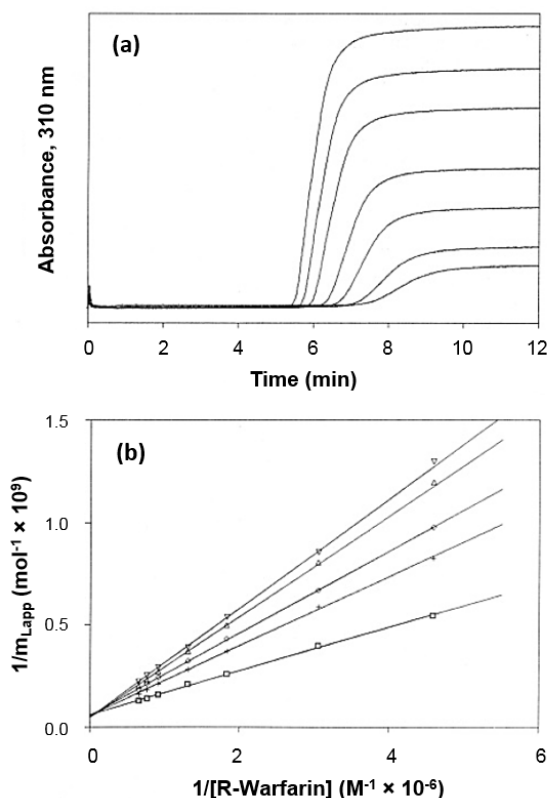


Figure 2. Frontal analysis results obtained for *R*-warfarin on an immobilized human serum albumin (HSA). The breakthrough curves in (a) were obtained at 4 °C and using *R*-warfarin concentrations (from left-to-right) of 1.50, 1.30, 1.10, 0.76, 0.55, 0.33 and 0.22 μM. The plots in (b) were obtained when such data were acquired at various temperatures (4–45 °C) and analyzed according to a double-reciprocal form of Equation (3). Reproduced with permission from [65]. Copyright American Chemical Society, 1994.

2.3. Kinetic Studies

The rate of a solute–protein interaction is another factor to consider in characterizing the separation of chiral drugs. This information can be helpful in examining the mechanism of a protein-based chiral separation and in optimizing such a separation [53,70–72]. Several chromatographic approaches have been used to examine the kinetics of drug–protein interactions. These methods include plate height measurements and the peak decay method [53,70–73].

Plate height and band-broadening measurements have been used in several studies to examine the rate of a drug interaction with an immobilized binding agent such as a protein [53,71–76]. For instance, plate height measurements have been used to obtain the dissociation and association rate constants for *R*- and *S*-warfarin or *D*- and *L*-tryptophan on columns containing immobilized HSA (see Figure 3) [53,72]. This kinetic information was obtained as conditions such as the mobile phase composition and temperature were varied and were used to optimize chiral separations for the given solutes on HSA columns. The temperature data were further employed to determine the changes in enthalpy, entropy, and total free energy that occur during the formation of an activated complex between each enantiomer and HSA [53,72]. Plate height measurements have also been utilized in a closely related method known as peak profiling to examine the interactions and separation of chiral phenytoin metabolites on an HSA column [71].

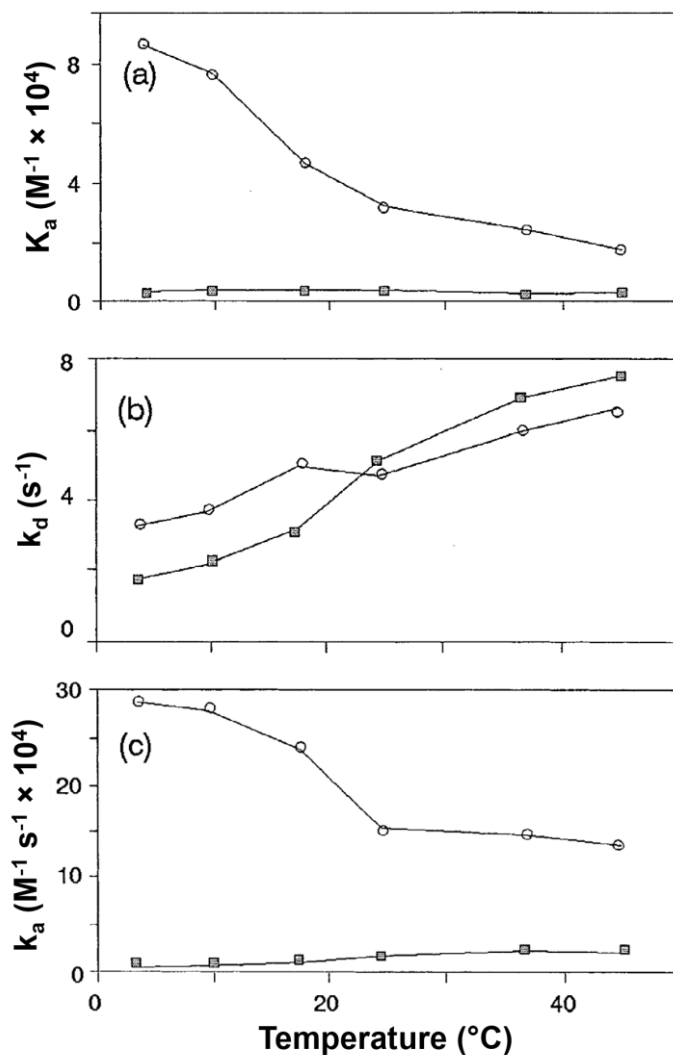


Figure 3. Use of frontal analysis and band-broadening measurements to measure the effect of temperature on the (a) Association equilibrium constants (K_a), (b) Dissociation rate constants (k_d) and (c) Association rate constants (k_a) for the interactions of D-tryptophan (■) and L-tryptophan (○) with a column containing immobilized human serum albumin (HSA). Reproduced with permission from [53]. Copyright Elsevier, 1997.

The peak decay method is another technique that has been used to study the kinetics for chiral drugs on columns containing immobilized proteins [73,76–78]. In this method, the target compound is first applied to the column, followed by a switch to flow rate and mobile phase conditions that allow elution of this target as soon as it dissociates from the immobilized binding agent. If this experiment is carried out under the proper column size and flow rate conditions, release of the bound target from the column should follow a pseudo-first-order decay that can be used to obtain the dissociation rate constant for the target from the immobilized binding agent [73,76–78]. A noncompetitive peak decay method was used with small HSA columns to examine the dissociation rate of R- and S-warfarin [70]. This work included an evaluation of how factors such as the column size, the amount of applied analyte, the flow rate, and particle size of the support affected these measurements [70]. In addition to drug enantiomers, the peak decay method has been used to determine the dissociation rates for drugs such as imipramine, cisplatin, and lidocaine from HSA or AGP [70,78,79].

3. Preparation of Protein-Based CSPs

3.1. Supports Used in Protein-Based CSPs

Various support materials have been employed in protein-based CSPs. Examples of these materials are agarose, silica, polymeric supports, and zirconia particles [18]. Agarose was used as early as 1973 to immobilize BSA for chiral separations [17,80]. Silica particles and related materials have also been used as supports in protein-based CSPs. The efficiency and good mechanical stability of these supports have been valuable in creating CSPs for use in HPLC systems [3,17,18]. Silica is generally limited to a pH range of 2–8 in these applications; however, this has not been a major issue in work with protein-based CSPs, which are often used at a neutral pH or over a pH range of 3–8 [17]. Silica monoliths have also been considered for use in protein-based chiral separations [54,59,81,82]. This type of monolith can be obtained commercially and is prepared through the hydrolysis of alkoxysilane precursors such as tetramethoxysilane and methyltrimethoxysilane, followed by condensation to yield a silica support [83–86].

Organic polymer-based monoliths have been employed in chiral separations [54,56,59,81,87–91]. A number of previous reports have prepared organic monoliths based on the use of glycidyl methacrylate (GMA) and ethylene dimethacrylate (EDMA) [54,56,59,87]. These monoliths are relatively easy to prepare and can have high permeability and low back pressures, along with good efficiencies [81,92]. It is also possible to use these monoliths with various immobilization schemes to create protein-based CSPs [81,92].

Both AGP- and HSA-based CSPs have been prepared by using supports such as silica particles, silica monoliths, and GMA/EDMA monoliths and compared through the methods of frontal analysis and zonal elution [54,59,93,94]. Some typical results are shown in Table 2 [54]. In general, higher protein content has been obtained for these CSPs when using a silica monolith versus silica particles or GMA/EDMA monoliths. This higher protein content tends to result in higher retention and greater or comparable resolution for some chiral solutes when using AGP or HSA in the silica monoliths [54,59].

Zirconia is another material that has been used in protein-based CSPs [18,95,96]. Advantages of using porous zirconia as a chromatographic support include its good mechanical, chemical, and thermal stabilities [18,95,96]. This material is also stable over a pH range of 1–14 [18,95]. Zirconia has been considered for use in a BSA-based CSP [96]. A zirconia-containing mixed oxide (i.e., magnesia-zirconia) has also been used in BSA-based CSPs, with the latter type of support being reported to have a larger surface area, and better pore size distribution and pore structure than bare zirconia [95].

3.2. Development and Evaluation of Protein Immobilization Methods

Gentle methods are usually desirable for immobilization when making a protein-based CSP to maintain the conformation of the protein and its ability for chiral discrimination [18]. A number of immobilized proteins have been employed in CSPs, as is shown in Table 1 [18,23–26]. More details on each of these proteins are provided in Section 4. Commercial CSPs are available that make use of the proteins BSA, HSA, and AGP, as well as enzymes such as cellobiohydrolase I (CBH I) [17,18,20,97]. Immobilization methods for preparing these and other protein-based CSPs have included physical adsorption, covalent immobilization, and encapsulation [3]. The evaluation of methods for preparing protein-based CSPs has often been performed by using chromatographic techniques such as frontal analysis and zonal elution, as described in Section 2 [33–35,58,59].

Table 2. Properties of AGP immobilized to various supports and chromatographic parameters of these supports for *R*- and *S*-propranolol ^a.

Type of Support	Silica Monolith	Silica Particles	GMA/EDMA Monolith
Protein content (nmol/g support)	1800 (\pm 40)	490 (\pm 20)	250 (\pm 10)
Protein coverage (nmol/m ²)	5.8 (\pm 0.2)	4.9 (\pm 0.2)	3.6 (\pm 0.1)
Retention factor, <i>k</i>	31.1 (\pm 0.4) (<i>R</i>)	11.6 (\pm 0.2) (<i>R</i>)	4.53 (\pm 0.06) (<i>R</i>)
	37.2 (\pm 0.4) (<i>S</i>)	13.7 (\pm 0.3) (<i>S</i>)	6.86 (\pm 0.05) (<i>S</i>)
Separation factor, α	1.20 (\pm 0.01)	1.18 (\pm 0.05)	1.51 (\pm 0.06)
Resolution, <i>R_s</i>	1.11 (\pm 0.03)	0.55 (\pm 0.03)	0.79 (\pm 0.03)

^a Adapted with permission from [54]. Copyright Elsevier, 2007.

3.2.1. Physical Adsorption

Physical adsorption typically involves the simple adsorption of a binding agent to a surface [98]. Physical adsorption based on ionic and/or hydrophobic interactions has been employed to immobilize proteins such as lysozyme and avidin onto silica particles and monoliths to form CSPs, as well as in fused-silica capillaries [98–103]. Adsorption onto silica has also been used to make stationary phases containing BSA or its fragments [104], α -chymotrypsin [105], lysozyme [98], and avidin [99,100,106]. In addition, BSA has been adsorbed onto zirconia and used as a CSP [96]. In this last example, adsorption at pH 4.4 gave a greater amount of adsorbed protein and stronger retention than when pH 6.9 was utilized; however, a support made at pH 6.9 gave better stereoselectivity [96]. Anion-exchange silica materials and polyethylene hollow fiber membranes are other supports that have been utilized to adsorb BSA and HSA for use in CSPs [101,102].

The major advantage of physical adsorption is its simplicity. This method is generally carried out by simply pumping a protein solution through a column under appropriate pH and solution conditions for adsorption [18]. Such a technique can be employed for the rapid assessment of new protein candidates for use in CSPs [18]. One drawback of this immobilization method is that CSPs that are made by physical adsorption can have stability problems due to the presence of weak interactions between the adsorbed protein and support [18]. In some cases, the optimum conditions for a stereoselective separation may lead to the loss of an adsorbed protein over time, possibly requiring the use of crosslinking to prevent this loss [17].

3.2.2. Covalent Immobilization

Covalent immobilization is the most common approach for preparing protein-based CSPs and can result in supports with good long-term stabilities [18,107]. Many techniques have been used to couple proteins to supports in CSPs. Some of these techniques are the Schiff base method (i.e., reductive amination), the *N*-hydroxysuccinimide (NHS) method, the carbonyldiimidazole (CDI) method, the epoxy method, the ethyl dimethylaminopropyl carbodiimide (EDC) method, and the tresyl chloride method, as well as others [17,18,105,107]. Figure 4 shows a few examples of these methods.

A number of protein-based CSPs have been prepared using the Schiff base method. This is often done by taking a diol-containing support, oxidizing this support to form aldehyde groups, and then allowing these aldehyde groups to combine with free amine groups on a protein and in the presence of sodium cyanoborohydride as a mild reducing agent [18,55,71,108–110]. The Schiff base method has often been employed for preparing columns containing HSA or BSA as CSPs [22,45,53,57,59,65,72,104,111]. A modified form of the Schiff base method has been used to immobilize serum albumins to amine-containing silica that has been activated with glutaraldehyde [95,112]. Similar methods have also been used to immobilize antibodies onto silica for use in chiral separations [113,114].

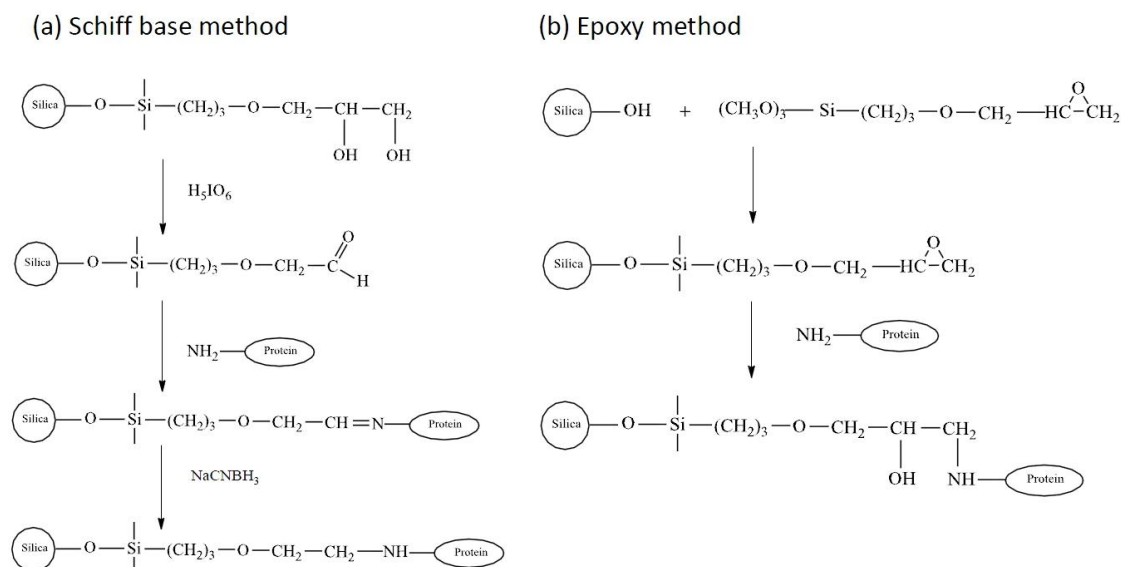


Figure 4. Examples of covalent immobilization methods for preparing protein-based CSPs on silica: (a) the Schiff base method and (b) the epoxy method.

The NHS method involves the use of a support that has been activated with a homo- or heterobifunctional agent such as *N,N'*-disuccinimidyl carbonate (DSC), *N,N'*-disuccinimidyl suberate (DSS), succinimidyl 4-(*N*-maleimidomethyl) cyclohexane-carboxylate (SMCC), or succinimidyl iodoacetate (SIC) [107]. DSC has been used to activate amine-derivatized silica for preparing various protein-based CSPs [3,17,33,35,109,115–118]. One report evaluated the binding of carbamazepine with HSA that had been immobilized by the Schiff base method or a DSC-based NHS method; these two approaches gave HSA columns with comparable binding constants and activities, but the NHS method gave less non-specific binding for carbamazepine [33]. However, CSPs that were prepared with amyloglucosidase and using DSC-activated silica showed poor stability when compared to a support made by the Schiff base method [110]. DSS has been used as an activating agent to immobilize HSA and avidin to aminopropyl silica for use as CSPs [109,115,116]. In one study, the retention and enantioselectivity of an avidin-based CSP made with DSS were found to be higher than the results that were obtained when using DSC [116].

The epoxy, CDI, and tresyl chloride methods are other approaches for immobilizing proteins through their amine groups [18,105,119–121]. The immobilization of α -chymotrypsin to silica has been examined when using the epoxy, tresyl chloride, and Schiff base methods [105]. The α -chymotrypsin-based CSP that was prepared by the epoxy method gave the highest enzyme content and the largest stereoselectivities in this group; a similar loading of the enzyme was observed in the other two methods, with the tresyl chloride method giving a support with lower stereoselectivity than that obtained with the Schiff base method [105]. Both BSA and HSA have been immobilized to diol-bonded silica particles by the CDI method, giving a final protein content that was two-fold higher than that obtained with the epoxy method [120]. The tresyl chloride method has also been used to immobilize BSA to silica, giving a comparable protein content to that obtained with the CDI method [120]. However, it has been noted for some drugs and solutes that the CDI method can result in greater non-specific binding than the Schiff base or NHS methods [33].

CSPs can be prepared by using other functional groups on proteins for immobilization. For instance, a protein can be coupled to a support through carboxylate groups by using the EDC method [17,122]. This method has been used to immobilize CBH I to amine-containing silica [122]. The same method has been employed for the immobilization of penicillin G acylase (PGA) [123]. Immobilization can also be achieved through the use of sulfhydryl groups on a protein. For instance, HSA has been immobilized through its lone free sulfhydryl group to amine-derivatized silica, which

was activated by using SMCC or SIC [35]. HSA-based CSPs prepared by these methods were found to have comparable or improved activity and stability to HSA supports that were made by the Schiff base method [35]. In addition, it is possible to use carbohydrate groups to immobilized glycoproteins for use as CSPs [34,54]. An example is the use of mild oxidation to generate aldehyde groups in the carbohydrate chains of AGP, followed by the coupling of these groups with hydrazide-activated supports such as silica particles, silica monoliths, or GMA/EDMA monoliths [34,54].

3.2.3. Encapsulation and Entrapment

When covalent immobilization is used, effects such as multisite attachment or the improper orientation of a protein can result in an actual or apparent loss of activity for this binding agent [107]. These effects can be avoided by instead using encapsulation or entrapment. These are non-covalent immobilization techniques based on the physical containment of a protein within a support [83–85,107]. Several reports have employed sol-gel encapsulation to prepare monoliths that contained BSA or ovomucoid for use as CSPs in capillary electrochromatography (CEC) [83,84,86]. This method has also been used to prepare a sol-gel/organic hybrid composite material containing encapsulated BSA [85].

An alternative method based on entrapment was recently reported in which HSA and AGP were entrapped in hydrazide-activated silica by using mildly oxidized glycogen as a capping agent [124–126]. This method has been used with both normal HSA and glycosylated HSA and has been found to give essentially full activity for these proteins in their binding with chiral solutes such as *R*-warfarin and *L*-tryptophan [125].

4. Chromatographic Studies of Protein-Based CSPs

4.1. Serum Transport Proteins

A number of serum proteins play a crucial role in transporting endogenous and exogenous compounds in the bloodstream, such as drugs, hormones, fatty acids, and metal ions [3,111,127]. Many of these interactions are also stereoselective in nature [3,128]. This feature has made serum transport proteins such as HSA, BSA, and AGP of interest for use as CSPs and in chromatographic studies of drug–protein interactions [3,128].

4.1.1. Human Serum Albumin and Bovine Serum Albumin

HSA is the most abundant protein in human plasma (concentration, 30–50 mg/mL). This protein consists of 585 amino acids and has a molecular mass of 66.5 kDa [3,127]. BSA is the type of serum albumin found in cattle [129] and is closely related to HSA, with a molecular mass of 66.2 kDa [3]. Both HSA and BSA are globular proteins with single polypeptide chains that are stabilized by 17 disulfide bridges [3].

HSA and BSA have two major drug binding sites that are often referred to as Sudlow sites I and II [130,131]. Sudlow site I (i.e., the warfarin-azapropazone site) is formed by a hydrophobic pocket in subdomain IIA of HSA [130,131]. Warfarin is commonly used as a probe for this site [132]. Sudlow site II (i.e., the indole-benzodiazepine site) is located in subdomain IIIA. Diazepam, *L*-tryptophan, and ibuprofen have all been used as probes for this region [133]. HSA and BSA also contain several binding regions for other solutes, such as fatty acids, metal ions, and other types of drugs or organic compounds [3].

The various sites on these proteins and the relatively broad range of solutes that can bind to these regions have made BSA and HSA of interest in obtaining chiral separations [3,17]. The use of serum albumins as binding agents for chiral separations has been widely examined in terms of the immobilization methods, types of supports and chromatographic conditions that can be used in such work [3,17,20]. Examples of chiral compounds that have been separated and studied by HSA- and BSA-based CSPs have included coumarins (e.g., *R/S*-warfarin) [119], benzodiazepine derivatives [43,134],

barbiturates [135], benzothiadiazines [135], α -arylpropionic acids (e.g., *R/S*-ibuprofen) [44], and amino acids (e.g., *D/L*-tryptophan) or hormones (e.g., *D/L*-thyroxine) and related derivatives [104,136–138].

Chromatography has been used to carry out thermodynamic and kinetic studies on the binding of chiral solutes such as *R*- and *S*-warfarin and *D*- and *L*-tryptophan with immobilized HSA columns (see Figures 2 and 3) [44,45,53,57,65,72]. For *R*- and *S*-warfarin, frontal analysis and zonal elution competition experiments indicated that these two enantiomers were binding to the same region on HSA but with a slightly higher binding capacity being observed for *R*-warfarin and a larger change in enthalpy being seen for *S*-warfarin [65]. Plate height measurements have been used to examine the interaction kinetics of *R*- and *S*-warfarin with immobilized HSA [72]. The dissociation rate constants for these interactions have been found to increase as the temperature is raised from 4 to 45 °C, with the value for *R*-warfarin going from 0.06 to 1.9 s^{−1} and the value for *S*-warfarin increasing from 0.06 to 0.36 s^{−1} [72]. The combined results obtained from these studies have further indicated that the chiral separation of *R*- and *S*-warfarin on an HSA column can be altered by varying the temperature [65,72].

Similar experiments employing frontal analysis and zonal elution have been used to investigate the binding of *D*- and *L*-tryptophan with immobilized HSA [45,53,57]. It has been found that these enantiomers bind to single but distinct sites on HSA, with *L*-tryptophan binding to Sudlow site II and *D*-tryptophan indirectly interacting with Sudlow site I [45,53,57]. The association equilibrium constants for *D*- and *L*-tryptophan with HSA were measured by chromatographic methods at temperatures ranging from 4 to 45 °C, with zonal elution studies also being used to estimate the dissociation and association rate constants for these interactions as a function of temperature, pH, ionic strength and solvent polarity [53,57]. In addition, studies with chemically-modified HSA have shown that HSA's lone tryptophan residue (Trp-214) affects the stereoselective binding of HSA for solutes such as warfarin [64].

It has been found in chromatographic studies that the pH of the mobile phase can affect the retention and stereoselectivity of serum albumin-based CSPs. For acidic compounds like warfarin and carboxylic acids, a decrease in pH of a serum albumin-based CSP can lead to an increase in retention and a decrease in stereoselectivity [135,139]. For basic compounds that contain an amine group and are aromatic amino acids (e.g., *D*- and *L*-tryptophan), an increase in both the retention and stereoselectivity is observed on a serum albumin column when there is an increase in pH [3]. Ionic strength can also influence the retention of chiral compounds on these columns but does so in a complex manner because both electrostatic and hydrophobic interactions are affected when the ionic strength is altered [3,139]. Furthermore, the presence of an organic modifier such as 1-propanol can be used to adjust the retention and separation of chiral solutes on such columns [3,55,56].

In addition to supports like silica particles and agarose [3,17,140], monoliths have been used in serum albumin-based chiral separations [56,59,141,142]. For instance, an HSA-based CSP was made using a silica monolith and evaluated for its ability to bind and separate the enantiomers of warfarin, tryptophan, and ibuprofen; the results were then compared with those obtained on columns that contained HSA on silica particles or within GMA/EDMA monoliths [59]. Silica monoliths have also been modified with BSA and gold nanoparticles. This type of CSP was employed in capillary CEC to separate phenylthiocarbamyl amino acids [141]. Two versions of the Schiff base method were used to immobilize BSA onto silica monoliths for use in CEC, with these supports being compared for their ability to separate *D*- and *L*-tryptophan [142]. A GMA/EDMA monolith that contained HSA in affinity microcolumns was optimized and employed in chiral separations, making it possible to separate the enantiomers of warfarin and tryptophan within only 1.5–6.0 min [56].

A number of other supports and column formats have been used to make serum albumin-based CSPs. Silica that contained both macropores and mesopores was used to immobilize BSA and tested for its ability to separate *D*- and *L*-tryptophan [143]. A chip-based column was made by placing dopamine and graphene oxide on the inner wall of an open-tubular capillary, with BSA then being immobilized to this coating. This column was used in CEC for the separation of *D/L*-tryptophan, *D/L*-threonine and a chiral dipeptide [144]. An HSA-based CSP has been used with affinity microcolumns and

ultrafast affinity extraction to simultaneously measure the free, or non-protein bound, fractions of *R*- and *S*-warfarin in serum and to study the interactions of these enantiomers with soluble HSA [55]. Another study used an HSA-based CSP made on a GMA/EDMA monolith to study the oxidation of D-tryptophan by the enzyme D-amino acid oxidase (see Figure 5) [87].

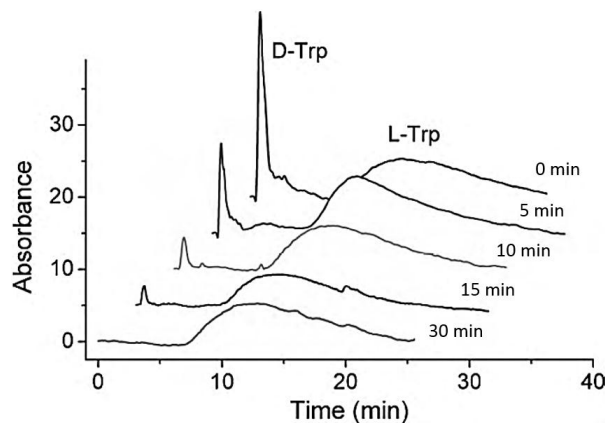


Figure 5. Chiral separation of D- and L-tryptophan and analysis of the oxidation of D-tryptophan by the enzyme D-amino acid oxidase using a column containing immobilized HSA. Reproduced with permission from [87]. Copyright Elsevier, 2010.

4.1.2. Alpha₁-Acid Glycoprotein

AGP is a glycoprotein that has a normal concentration in human serum of 0.5–1 mg/mL [145,146]. Human AGP has an average molecular mass of 41 kDa and consists of a single chain of 183 amino acid. This protein has an isoelectric point of 2.8–3.8 [145,146] and contains five *N*-linked glycan chains, giving it a carbohydrate content of 45% (*w/w*) [145,147,148]. AGP is an important transport protein in the blood for many basic and neutral drugs, as well as some acidic drugs (e.g., warfarin) [145,147,149–151]. AGP has a highly symmetrical β -sheet structure that is comprised of an eight-stranded β -barrel [146,147,152]. This protein is believed to have one wide and flexible drug-binding region that is common for basic, acidic, and neutral drugs [150,152,153].

Thermodynamic studies have been conducted by chromatography and with immobilized AGP to examine the interactions of *R*- and *S*-propranolol with this protein [34,58,154]. The binding of both enantiomers to AGP was found to be mainly an enthalpy-driven process [34]. In addition, frontal analysis experiments have suggested that the interaction of *R*- and *S*-propranolol with AGP followed a saturable/nonsaturable mixed-mode model, with the saturable site having an equilibrium constant of $(1.1 \pm 0.6) \times 10^6 \text{ M}^{-1}$ for *R*-propranolol and $(1.4 \pm 0.7) \times 10^6 \text{ M}^{-1}$ for *S*-propranolol at 37 °C [154].

Several reports have employed commercial AGP-based CSPs to evaluate the effects of changing the mobile phase composition and column temperature on the resolution or retention of various chiral solutes [155,156]. Altering the mobile phase pH and column temperature can be used to control the elution order of some chiral solutes and to resolve multiple chiral compounds by using gradient elution [155]. The use of organic modifiers such as methanol, ethanol, propanol, and tertiary alcohol additives has also been investigated in terms of its effects on the stereoselectivity of AGP columns [156].

Commercial AGP columns have been used for the separation of many chiral compounds [154,157–164]. For example, chiral separations have been achieved by using these columns for atenolol, citalopram, warfarin, verapamil, norverapamil, atropine, and vinca alkaloid analogues [157–161]. Liquid chromatography-tandem mass spectrometry (LC-MS/MS) has been used with AGP columns for the stereoselective separation and quantitation of drugs such as methadone [162] and ornidazole [163].

Work has also continued in the development of new methods and supports for preparing AGP-based CSPs [54,58]. One type of AGP-based CSP was prepared by mildly oxidizing the carbohydrate chains on AGP and using these modified residues to immobilize this glycoprotein onto hydrazide-activated silica [34,58]. A similar approach has been used to prepare CSPs in which AGP was immobilized to monoliths based on silica or GMA/EDMA [54].

4.2. Enzymes

4.2.1. Penicillin G Acylase

PGA is an *N*-terminal nucleophile hydrolase that is widely present in bacteria, yeast, and fungi [23,165]. Mature PGA from *E. coli* is a heterodimer of 20.5 kDa and 69 kDa subunits that contain 209 and 557 amino acids, respectively [23]. PGA is often used in the pharmaceutical industry for hydrolytic cleavage of the acyl chain of penicillin G [23,165,166]. However, this enzyme has also been found to be useful as a CSP for a variety of acidic aromatic compounds because of its binding specificity for acyl groups [165,166]. Other attractive features for PGA as a chiral binding agent are its low cost and availability in a highly pure form [123].

PGA has been studied in several reports as a possible CSP. For instance, the chiral recognition mechanism of PGA has been examined, by chromatography and other methods, for a series of 2-aryloxyacetic acids [166,167]. PGA has been immobilized to silica through amine or carboxylate groups and employed in an HPLC system for both hydrolyzing penicillin G and carrying out a chiral separation on the products [123]. Another report used a PGA-based silica monolith in capillary liquid chromatography for the chiral resolution of arylpropionic acids such as ketoprofen [168].

4.2.2. Cellobiohydrolases

Cellobiohydrolases (CBHs) are enzymes found in fungal cellulose systems that have the ability to hydrolyze β -1,4-glycosidic bonds [17,169]. The fungus *Trichoderma reesei* can produce two major types of CBHs (i.e., CBH I and II), both of which are naturally *N*- and *O*-glycosylated [169]. Of these two types, CBH I has been employed the most as a chiral selector. This enzyme has been used in chiral separations to resolve acidic, basic, and neutral compounds [3,17,170]. CBH I consists of nearly 500 amino acids that make up a large core, a small cellulose-binding domain, and a flexible connecting arm [17,170–172]. The catalytic domain of the core is the area that provides the chiral selectivity for this enzyme [3,173,174].

The largest stereoselectivity for CBH I has been observed in the separation of β -blockers like propranolol, alprenolol, oxprenolol, and metoprolol [3,17]. This observation agrees with the fact that propranolol and alprenolol can inhibit CBH I stereoselectively, with the *S*-enantiomers having stronger inhibitory effects and affinity than the *R*-enantiomers [174]. A number of reports have used commercial CBH-based CSPs with LC and MS detection [169,175,176]. For example, a CBH-based CSP has been used with LC-MS/MS to analyze 56 drug biomarkers in wastewater, including 18 pairs of enantiomers for drugs such as amphetamine, methamphetamine, 3,4-methylenedioxy-methamphetamine, and their metabolites [176].

4.2.3. α -Chymotrypsin

α -Chymotrypsin (sometimes referred to as “ α -CHT” or “ACHT”) is a digestive enzyme and serine protease [3]. This enzyme can hydrolyze a peptide chain on the C-terminal side of residues that contain aromatic amino acids (e.g., tyrosine, phenylalanine or tryptophan) [3]. This enzyme has three polypeptide chains and consists of a total of 241 amino acids [177]. The substrate-binding site of this enzyme is composed of a hydrophobic pocket and a hydrolytically active site that is formed by Ser 195, His 57, and Asp 102 [178].

This enzyme has been covalently immobilized to silica and used as a CSP for the stereoselective resolution of various amino acids, amino acid derivatives, and dipeptides [179]. Aromatic amino acids

such as tyrosine, phenylalanine, and tryptophan, which are recognized by the substrate-binding site of α -chymotrypsin, have been the main targets of interest in these studies [3,17]. It has been found that the O- and N-derivatives of these amino acids (e.g., methyl esters or amides) can also be resolved by using this type of CSP [105]. In addition, α -chymotrypsin has been used in chiral separations for some amino acids that are not substrates for this enzyme (e.g., leucine and alanine) [3]. α -Chymotrypsin-based CSPs have further been used to separate a series of enantiomeric and diastereomeric dipeptides [180]. In addition, amino acid derivatives and chiral compounds such as naproxen and aryloxyproionic acids have been separated by using α -chymotrypsin-based CSPs [121].

4.3. Other Proteins

A number of other proteins have been considered as binding agents and CSPs for chromatography. One example is ovomucoid, which is a glycoprotein found in egg whites and that contains three homologous domains [118]. Ovomucoid columns have been used for chiral separations of a large number of drugs and chiral solutes [28,118,164,181–184]. In one recent study, an ovomucoid-based CSP was used with LC-MS/MS to separate and analyze the enantiomers of ondansetron and doxazosin in human plasma and to give information on the pharmacokinetics of these agents [185,186].

Antibodies, which are glycoproteins that are produced by the immune system of vertebrates, are another group of proteins that have been explored for use in chiral separations [187–193]. Various anti- α -amino acid antibodies have been used as chiral agents to separate aromatic and aliphatic amino acids (see Figure 6) [189,191,192]. Antibodies against α -hydroxy acids have been employed to resolve the enantiomers of several α -hydroxy acids, including both aromatic and aliphatic compounds (e.g., lactic acid) [193]. In one report, a monoclonal anti-D-hydroxy acid antibody was used to isolate and analyze the enantiomers of lactic acid in human urine by using immunoaffinity chromatography and LC-MS [190].

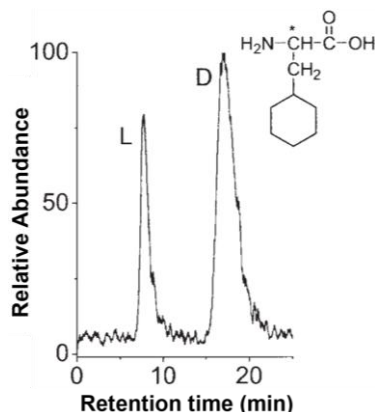


Figure 6. Chiral separation of D- and L-3-cyclohexylalanine on a column containing immobilized anti-D-amino acid antibodies. Adapted with permission from [192]. Copyright John Wiley and Sons, 2006.

Avidin is a glycoprotein that is obtained from egg whites and that can strongly bind to biotin [194]. Avidin-based CSPs have been investigated for use with drugs and solutes that have included thalidomide, glutethimide, premaqune, aminoglutethimide, and pyridoglutethimide [195]. In addition, this protein has been used in open tubular columns and in CEC for chiral separations [99,100,106,196–198]. Avidin-based CSPs have also been prepared by immobilizing this protein to a phospholipid coating or to magnetic particles in a fused silica capillary [106,197]. Chiral separations have been obtained with avidin in open tubular columns for a variety of chiral compounds, including ketoprofen, flurbiprofen, ibuprofen, abscisic acid, chrysanthemic acid, warfarin, tryptophan, omeprazole, and 5-hydroxyomeprazole [99,100,106,196–198].

Streptavidin is a biotin-binding protein that is produced by the bacterium *Streptomyces avidinii* [20,26]. Streptavidin and avidin are both tetrameric proteins and have similar primary structures, but the overall charges for these two proteins are quite different, with streptavidin having an isoelectric point of 5 and avidin having a value of 10 [20,194]. Streptavidin has been employed as a CSP on a perfusion support for separating adenosine enantiomers [199]. The role of the biotin binding sites in this process was examined by chromatography, as well as the binding capacity for D- and L-adenosine and the effects of sample concentration and temperature on solute retention [199].

5. Conclusions

The separation and analysis of chiral drugs has become important in both the discovery and development of new pharmaceutical agents [7,9]. Chromatographic methods employing proteins as chiral selectors have been found in recent years to be powerful tools for separating chiral drugs or solutes and for examining their interactions with proteins [6,9,17–19]. This review gave an overview of the chromatographic studies and applications that have involved protein-based chiral separations. Several chromatographic approaches were discussed that have been used to characterize and examine these separations, including zonal elution, frontal analysis, and kinetic methods of analysis. Supports and immobilization methods that have been used to prepare protein-based CSPs were also summarized. Finally, examples of proteins that have been considered for use in CSPs for chromatography, and the applications of these proteins were considered. These proteins ranged from serum transport proteins and enzymes to other proteins such as ovomucoid, antibodies, and avidin or streptavidin [17,18,20]. These protein-based CSPs have already been employed with a wide range of chiral drugs and solutes, as was illustrated by the examples given within this review. It was also shown how chromatographic methods have been used to provide valuable information for better characterizing and optimizing these chiral separations [17,18,20]. Future work in this area and in the use of chromatography with protein-based CSPs should lead to the continued development of improved chiral separations for drug discovery or development and pharmaceutical research [9,82,97].

Acknowledgments: This work was supported by National Institutes of Health under grant R01 GM044931, the National Science Foundation (NSF) under grant CHE 1309806, and the NSF/EPSCoR program under grant EPS-1004094.

Author Contributions: All of the authors contributed substantially to the preparation and production of this review.

Conflicts of Interest: The authors declare no conflict of interest.

References

1. Pasteur, L. Mémoire sur la relation qui peut exister entre la forme cristalline et la composition chimique, et sur la cause de la polarisation rotatoire. *C. R. Séances Acad. Sci.* **1848**, *26*, 535–538. (In French)
2. Drayer, D. The early history of stereochemistry. In *Drug Stereochemistry, Analytical Methods and Pharmacology*, 2nd ed.; Wainer, I.W., Ed.; Marcel Dekker: New York, NY, USA, 1993; pp. 5–14.
3. Patel, S.; Wainer, I.W.; Lough, W.J. Affinity-based chiral stationary phases. In *Handbook of Affinity Chromatography*, 2nd ed.; Hage, D.S., Ed.; CRC Press: Boca Raton, FL, USA, 2006; pp. 571–592.
4. Okamoto, Y. Helical polymers for efficient enantiomer separation. *Adv. Polym. Sci.* **2013**, *261*, 391–414.
5. Hyun, M.H.; Cho, Y.J. Chiral Separation by HPLC with Pirkle-Type Chiral Stationary Phases. In *Chiral Separations: Methods and Protocols*; Gübitz, G., Schmid, M.G., Eds.; Humana Press: Totowa, NJ, USA, 2004; pp. 197–205.
6. Subramanian, G. *Chiral Separation Techniques: A Practical Approach*; Wiley: Hoboken, NJ, USA, 2008.
7. He, Y. Chiral analysis in drug discovery and development. *Innov. Pharm. Technol.* **2010**, *35*, 18–23.
8. Lammerhofer, M.; Lindner, W. Recent developments in liquid chromatographic enantioseparation. In *Handbook of Analytical Separations*, 2nd ed.; Valko, K., Ed.; Marcel Dekker: New York, NY, USA, 2000; Volume 1, pp. 337–437.

9. Nie, Y.; Liu, X.; Yang, X.; Zhao, Z. Review: Recent application of chiral liquid chromatography-tandem mass spectrometric methods for enantiomeric pharmaceutical and biomedical determinations. *J. Chromatogr. Sci.* **2013**, *51*, 753–763. [[CrossRef](#)] [[PubMed](#)]
10. Kasprzyk-Hordern, B. Pharmacologically active compounds in the environment and their chirality. *Chem. Soc. Rev.* **2010**, *39*, 4466–4503. [[CrossRef](#)] [[PubMed](#)]
11. Nagori, B.P.; Deora, M.S.; Saraswat, P. Chiral drug analysis and their application. *Int. J. Pharm. Sci. Rev. Res.* **2011**, *6*, 106–113.
12. Nguyen, L.A.; He, H.; Pham-Huy, C. Chiral drugs: An overview. *Int. J. Biomed. Sci.* **2006**, *2*, 85–100. [[PubMed](#)]
13. Ilisz, I.; Berkecz, R.; Peter, A. Application of chiral derivatizing agents in the high-performance liquid chromatographic separation of amino acid enantiomers: A review. *J. Pharm. Biomed. Anal.* **2008**, *47*, 1–15. [[CrossRef](#)] [[PubMed](#)]
14. Sharma, B. Nature of chiral drugs and their occurrence in environment. *J. Xenobiotics* **2014**, *4*, 14–19. [[CrossRef](#)]
15. Evans, S.E.; Kasprzyk-Hordern, B. Applications of chiral chromatography coupled with mass spectrometry in the analysis of chiral pharmaceuticals in the environment. *Trends Environ. Anal. Chem.* **2014**, *1*, e34–e51. [[CrossRef](#)]
16. Anderson, J.; Berthod, A.; Pino, V.; Stalcup, A.M. *Analytical Separation Science*; Wiley: Hoboken, NJ, USA, 2016.
17. Haginaka, J. Protein-based chiral stationary phases for high-performance liquid chromatography enantioseparations. *J. Chromatogr. A* **2001**, *906*, 253–273. [[CrossRef](#)]
18. Millot, M.C. Separation of drug enantiomers by liquid chromatography and capillary electrophoresis, using immobilized proteins as chiral selectors. *J. Chromatogr. B* **2003**, *797*, 131–159. [[CrossRef](#)]
19. Zhang, Y.; Wu, D.R.; Wang-Iverson, D.B.; Tymiak, A.A. Enantioselective chromatography in drug discovery. *Drug Discov. Today* **2005**, *10*, 571–577. [[CrossRef](#)]
20. Haginaka, J. Recent progresses in protein-based chiral stationary phases for enantioseparations in liquid chromatography. *J. Chromatogr. B* **2008**, *875*, 12–19. [[CrossRef](#)] [[PubMed](#)]
21. Welch, C.J. Microscale chiral HPLC in support of pharmaceutical process research. *Chirality* **2009**, *21*, 114–118. [[CrossRef](#)] [[PubMed](#)]
22. Allenmark, S. *Chromatographic Enantioseparation: Methods and Applications*, 2nd ed.; Ellis Horwood: New York, NY, USA, 1991.
23. Calleri, E.; Temporini, C.; Massolini, G.; Caccialanza, G. Penicillin G acylase-based stationary phases: Analytical applications. *J. Pharm. Biomed. Anal.* **2004**, *35*, 243–258. [[CrossRef](#)]
24. Montes, T.; Grazu, V.; Lopez-Gallego, F.; Hermoso, J.A.; Garcia, J.L.; Manso, I.; Galan, B.; Gonzalez, R.; Fernandez-Lafuente, R.; Guisan, J.M. Genetic modification of the penicillin G acylase surface to improve its reversible immobilization on ionic exchangers. *Appl. Environ. Microbiol.* **2007**, *73*, 312–319. [[CrossRef](#)] [[PubMed](#)]
25. Prin, C.; Bene, M.C.; Gobert, B.; Montagne, P.; Faure, G.C. Isoelectric Restriction of Human-Immunoglobulin Isotypes. *BBA Gen. Subj.* **1995**, *1243*, 287–289. [[CrossRef](#)]
26. Weber, P.C.; Ohlendorf, D.H.; Wendoloski, J.J.; Salemme, F.R. Structural origins of high-affinity biotin binding to streptavidin. *Science* **1989**, *243*, 85–88. [[CrossRef](#)] [[PubMed](#)]
27. Berthod, A. *Chiral Recognition in Separation Methods. Mechanisms and Applications*; Springer-Verlag: Berlin, Germany, 2010.
28. Haginaka, J.; Seyama, C.; Yasuda, H.; Takahashi, K. Investigation of enantioselectivity and enantiomeric elution order of propranolol and its ester derivatives on an ovomucoid-bonded column. *J. Chromatogr. A* **1992**, *598*, 67–72. [[CrossRef](#)]
29. Zhai, Z.; Chen, Y.; Wang, Y.J.; Luo, G.S. Chiral separation performance of micrometer-sized monodispersed silica spheres with high protein loading. *Chirality* **2009**, *21*, 760–768. [[CrossRef](#)] [[PubMed](#)]
30. Chaiken, I.M. *Analytical Affinity Chromatography*; CRC Press: Boca Raton, FL, USA, 1987.
31. Hage, D.S. Chromatographic and electrophoretic studies of protein binding to chiral solutes. *J. Chromatogr. A* **2001**, *906*, 459–481. [[CrossRef](#)]
32. Hage, D.S.; Chen, J. Quantitative affinity chromatography: Practical aspects. In *Handbook of Affinity Chromatography*, 2nd ed.; Hage, D.S., Ed.; CRC Press: Boca Raton, FL, USA, 2006; pp. 595–628.

33. Kim, H.S.; Mallik, R.; Hage, D.S. Chromatographic analysis of carbamazepine binding to human serum albumin: II. Comparison of the Schiff base and *N*-hydroxysuccinimide immobilization methods. *J. Chromatogr. B* **2006**, *837*, 138–146. [[CrossRef](#)] [[PubMed](#)]
34. Xuan, H.; Hage, D.S. Immobilization of α_1 -acid glycoprotein for chromatographic studies of drug-protein binding. *Anal. Biochem.* **2005**, *346*, 300–310. [[CrossRef](#)] [[PubMed](#)]
35. Mallik, R.; Wa, C.; Hage, D.S. Development of sulfhydryl-reactive silica for protein immobilization in high-performance affinity chromatography. *Anal. Chem.* **2007**, *79*, 1411–1424. [[CrossRef](#)] [[PubMed](#)]
36. Matsuda, R.; Li, Z.; Zheng, X.; Hage, D.S. Analysis of multi-site drug-protein interactions by high-performance affinity chromatography: Binding by glimepiride to normal or glycated human serum albumin. *J. Chromatogr. A* **2015**, *1408*, 133–144. [[CrossRef](#)] [[PubMed](#)]
37. Matsuda, R.; Li, Z.; Zheng, X.; Hage, D.S. Analysis of glipizide binding to normal and glycated human serum albumin by high-performance affinity chromatography. *Anal. Bioanal. Chem.* **2015**, *407*, 5309–5321. [[CrossRef](#)] [[PubMed](#)]
38. Arnold, F.H.; Schofield, S.A.; Blanch, H.W. Analytical Affinity-Chromatography: I. Local Equilibrium-Theory and the Measurement of Association and Inhibition Constants. *J. Chromatogr. A* **1986**, *355*, 1–12. [[CrossRef](#)]
39. Vidalmadjar, C.; Jaulmes, A.; Racine, M.; Seville, B. Determination of Binding Equilibrium-Constants by Numerical-Simulation in Zonal High-Performance Affinity-Chromatography. *J. Chromatogr. A* **1988**, *458*, 13–25. [[CrossRef](#)]
40. Hage, D.S.; Tweed, S.A. Recent advances in chromatographic and electrophoretic methods for the study of drug-protein interactions. *J. Chromatogr. B* **1997**, *699*, 499–525. [[CrossRef](#)]
41. Haginaka, J.; Kanasugi, N. Enantioselectivity of bovine serum albumin-bonded columns produced with isolated protein fragments. II. Characterization of protein fragments and chiral binding sites. *J. Chromatogr. A* **1997**, *769*, 215–223. [[CrossRef](#)]
42. Kaliszan, R. QSRR: Quantitative structure-(chromatographic) retention relationships. *Chem. Rev.* **2007**, *107*, 3212–3246. [[CrossRef](#)] [[PubMed](#)]
43. Kaliszan, R.; Noctor, T.A.G.; Wainer, I.W. Stereochemical aspects of benzodiazepine binding to human serum albumin. II. Quantitative relationships between structure and enantioselective retention in high performance liquid affinity chromatography. *Mol. Pharmacol.* **1992**, *42*, 512–517. [[PubMed](#)]
44. Hage, D.S.; Noctor, T.A.G.; Wainer, I.W. Characterization of the protein-binding of chiral drugs by high-performance affinity chromatography. Interactions of *R*-ibuprofen and *S*-ibuprofen with human serum-albumin. *J. Chromatogr. A* **1995**, *693*, 23–32. [[CrossRef](#)]
45. Yang, J.; Hage, D.S. Characterization of the binding and chiral separation of D- and L-tryptophan on a high-performance immobilized human serum albumin column. *J. Chromatogr. A* **1993**, *645*, 241–250. [[CrossRef](#)]
46. Hage, D.S. High-performance affinity chromatography: A powerful tool for studying serum protein binding. *J. Chromatogr. B* **2002**, *768*, 3–30. [[CrossRef](#)]
47. Sengupta, A.; Hage, D.S. Characterization of minor site probes for human serum albumin by high-performance affinity chromatography. *Anal. Chem.* **1999**, *71*, 3821–3827. [[CrossRef](#)] [[PubMed](#)]
48. Chen, J.Z.; Fitos, I.; Hage, D.S. Chromatographic analysis of allosteric effects between ibuprofen and benzodiazepines on human serum albumin. *Chirality* **2006**, *18*, 24–36. [[CrossRef](#)] [[PubMed](#)]
49. Chen, J.Z.; Hage, D.S. Quantitative analysis of allosteric drug-protein binding by biointeraction chromatography. *Nat. Biotechnol.* **2004**, *22*, 1445–1448. [[CrossRef](#)] [[PubMed](#)]
50. Chen, J.Z.; Hage, D.S. Quantitative studies of allosteric effects by biointeraction chromatography: Analysis of protein binding for low-solubility drugs. *Anal. Chem.* **2006**, *78*, 2672–2683. [[CrossRef](#)] [[PubMed](#)]
51. Chen, J.Z.; Ohnmacht, C.; Hage, D.S. Studies of phenytoin binding to human serum albumin by high-performance affinity chromatography. *J. Chromatogr. B* **2004**, *809*, 137–145. [[CrossRef](#)] [[PubMed](#)]
52. Noctor, T.A.; Wainer, I.W.; Hage, D.S. Allosteric and competitive displacement of drugs from human serum albumin by octanoic acid, as revealed by high-performance liquid affinity chromatography, on a human serum albumin-based stationary phase. *J. Chromatogr. A* **1992**, *577*, 305–315. [[CrossRef](#)]
53. Yang, J.; Hage, D.S. Effect of mobile phase composition on the binding kinetics of chiral solutes on a protein-based high-performance liquid chromatography column: Interactions of D- and L-tryptophan with immobilized human serum albumin. *J. Chromatogr. A* **1997**, *766*, 15–25. [[CrossRef](#)]

54. Mallik, R.; Xuan, H.; Hage, D.S. Development of an affinity silica monolith containing alpha1-acid glycoprotein for chiral separations. *J. Chromatogr. A* **2007**, *1149*, 294–304. [[CrossRef](#)] [[PubMed](#)]
55. Zheng, X.; Yoo, M.J.; Hage, D.S. Analysis of free fractions for chiral drugs using ultrafast extraction and multi-dimensional high-performance affinity chromatography. *Analyst* **2013**, *138*, 6262–6265. [[CrossRef](#)] [[PubMed](#)]
56. Pfaunmiller, E.L.; Hartmann, M.; Dupper, C.M.; Soman, S.; Hage, D.S. Optimization of human serum albumin monoliths for chiral separations and high-performance affinity chromatography. *J. Chromatogr. A* **2012**, *1269*, 198–207. [[CrossRef](#)] [[PubMed](#)]
57. Yang, J.; Hage, D.S. Role of binding capacity versus binding strength in the separation of chiral compounds on protein-based high-performance liquid chromatography columns. Interactions of D- and L-tryptophan with human serum albumin. *J. Chromatogr. A* **1996**, *725*, 273–285. [[CrossRef](#)]
58. Xuan, H.; Hage, D.S. Evaluation of a hydrazide-linked α_1 -acid glycoprotein chiral stationary phase: Separation of R- and S-propranolol. *J. Sep. Sci.* **2006**, *29*, 1412–1422. [[CrossRef](#)] [[PubMed](#)]
59. Mallik, R.; Hage, D.S. Development of an affinity silica monolith containing human serum albumin for chiral separations. *J. Pharm. Biomed. Anal.* **2008**, *46*, 820–830. [[CrossRef](#)] [[PubMed](#)]
60. Hage, D.S.; Anguizola, J.; Barnaby, O.; Jackson, A.; Yoo, M.J.; Papastavros, E.; Pfaunmiller, E.; Sobansky, M.; Tong, Z. Characterization of drug interactions with serum proteins by using high-performance affinity chromatography. *Curr. Drug Metab.* **2011**, *12*, 313–328. [[CrossRef](#)] [[PubMed](#)]
61. Zheng, X.; Li, Z.; Beeram, S.; Podariu, M.; Matsuda, R.; Pfaunmiller, E.L.; White, C.I.; Carter, N.; Hage, D.S. Analysis of biomolecular interactions using affinity microcolumns: A review. *J. Chromatogr. B* **2014**, *968*, 49–63. [[CrossRef](#)] [[PubMed](#)]
62. Jacobson, S.C.; Andersson, S.; Allenmark, S.G.; Guiochon, G. Estimation of the Number of Enantioselective Sites of Bovine Serum-Albumin Using Frontal Chromatography. *Chirality* **1993**, *5*, 513–515. [[CrossRef](#)] [[PubMed](#)]
63. Tweed, S.A.; Loun, B.; Hage, D.S. Effects of ligand heterogeneity in the characterization of affinity columns by frontal analysis. *Anal. Chem.* **1997**, *69*, 4790–4798. [[CrossRef](#)] [[PubMed](#)]
64. Chattopadhyay, A.; Tian, T.; Kortum, L.; Hage, D.S. Development of tryptophan-modified human serum albumin columns for site-specific studies of drug-protein interactions by high-performance affinity chromatography. *J. Chromatogr. B* **1998**, *715*, 183–190. [[CrossRef](#)]
65. Loun, B.; Hage, D.S. Chiral separation mechanisms in protein-based HPLC columns. 1. Thermodynamic studies of (R)- and (S)-warfarin binding to immobilized human serum albumin. *Anal. Chem.* **1994**, *66*, 3814–3822. [[CrossRef](#)] [[PubMed](#)]
66. Chen, S.; Sobansky, M.R.; Hage, D.S. Analysis of drug interactions with high-density lipoprotein by high-performance affinity chromatography. *Anal. Biochem.* **2010**, *397*, 107–114. [[CrossRef](#)] [[PubMed](#)]
67. Sobansky, M.R.; Hage, D.S. Identification and analysis of stereoselective drug interactions with low-density lipoprotein by high-performance affinity chromatography. *Anal. Bioanal. Chem.* **2012**, *403*, 563–571. [[CrossRef](#)] [[PubMed](#)]
68. Sobansky, M.R.; Hage, D.S. Analysis of drug interactions with very low density lipoprotein by high-performance affinity chromatography. *Anal. Bioanal. Chem.* **2014**, *406*, 6203–6211. [[CrossRef](#)] [[PubMed](#)]
69. Sobansky, M.R.; Hage, D.S. Analysis of drug interactions with lipoproteins by high-performance affinity chromatography. *Adv. Med. Biol.* **2012**, *53*, 199–216. [[PubMed](#)]
70. Chen, J.; Schiel, J.E.; Hage, D.S. Noncompetitive peak decay analysis of drug-protein dissociation by high-performance affinity chromatography. *J. Sep. Sci.* **2009**, *32*, 1632–1641. [[CrossRef](#)] [[PubMed](#)]
71. Tong, Z.; Hage, D.S. Characterization of interaction kinetics between chiral solutes and human serum albumin by using high-performance affinity chromatography and peak profiling. *J. Chromatogr. A* **2011**, *1218*, 6892–6897. [[CrossRef](#)] [[PubMed](#)]
72. Loun, B.; Hage, D.S. Chiral separation mechanisms in protein-based HPLC columns. 2. Kinetic studies of (R)- and (S)-warfarin binding to immobilized human serum albumin. *Anal. Chem.* **1996**, *68*, 1218–1225. [[CrossRef](#)] [[PubMed](#)]
73. Bi, C.; Beeram, S.; Li, Z.; Zheng, X.; Hage, D.S. Kinetic analysis of drug-protein interactions by affinity chromatography. *Drug Discov. Today Technol.* **2015**, *17*, 16–21. [[CrossRef](#)] [[PubMed](#)]
74. Schiel, J.E.; Ohnmacht, C.M.; Hage, D.S. Measurement of drug-protein dissociation rates by high-performance affinity chromatography and peak profiling. *Anal. Chem.* **2009**, *81*, 4320–4333. [[CrossRef](#)] [[PubMed](#)]

75. Tong, Z.; Schiel, J.E.; Papastavros, E.; Ohnmacht, C.M.; Smith, Q.R.; Hage, D.S. Kinetic studies of drug-protein interactions by using peak profiling and high-performance affinity chromatography: Examination of multi-site interactions of drugs with human serum albumin columns. *J. Chromatogr. A* **2011**, *1218*, 2065–2071. [[CrossRef](#)] [[PubMed](#)]
76. Schiel, J.E.; Hage, D.S. Kinetic studies of biological interactions by affinity chromatography. *J. Sep. Sci.* **2009**, *32*, 1507–1522. [[CrossRef](#)] [[PubMed](#)]
77. Zheng, X.; Bi, C.; Li, Z.; Podariu, M.; Hage, D.S. Analytical methods for kinetic studies of biological interactions: A review. *J. Pharm. Biomed. Anal.* **2015**, *113*, 163–180. [[CrossRef](#)] [[PubMed](#)]
78. Yoo, M.J.; Hage, D.S. High-throughput analysis of drug dissociation from serum proteins using affinity silica monoliths. *J. Sep. Sci.* **2011**, *34*, 2255–2263. [[CrossRef](#)] [[PubMed](#)]
79. Yoo, M.J.; Hage, D.S. Use of peak decay analysis and affinity microcolumns containing silica monoliths for rapid determination of drug-protein dissociation rates. *J. Chromatogr. A* **2011**, *1218*, 2072–2078. [[CrossRef](#)] [[PubMed](#)]
80. Stewart, K.K.; Doherty, R.F. Resolution of DL-tryptophan by affinity chromatography on bovine-serum albumin-agarose columns. *Proc. Natl. Acad. Sci. USA* **1973**, *70*, 2850–2852. [[CrossRef](#)] [[PubMed](#)]
81. Zheng, Y.; Wang, X.; Ji, Y.B. Monoliths with proteins as chiral selectors for enantiomer separation. *Talanta* **2012**, *91*, 7–17. [[CrossRef](#)] [[PubMed](#)]
82. Zhang, Z.B.; Wu, R.A.; Wu, M.H.; Zou, H.F. Recent progress of chiral monolithic stationary phases in CEC and capillary LC. *Electrophoresis* **2010**, *31*, 1457–1466. [[CrossRef](#)] [[PubMed](#)]
83. Kato, M.; Matsumoto, N.; Sakai-Kato, K.; Toyo'oka, T. Investigation of chromatographic performances and binding characteristics of BSA-encapsulated capillary column prepared by the sol-gel method. *J. Pharm. Biomed. Anal.* **2003**, *30*, 1845–1850. [[CrossRef](#)]
84. Kato, M.; Sakai-Kato, K.; Matsumoto, N.; Toyo'oka, T. A protein-encapsulation technique by the sol-gel method for the preparation of monolithic columns for capillary electrochromatography. *Anal. Chem.* **2002**, *74*, 1915–1921. [[CrossRef](#)] [[PubMed](#)]
85. Kato, M.; Saruwatari, H.; Sakai-Kato, K.; Toyo'oka, T. Silica sol-gel/organic hybrid material for protein encapsulated column of capillary electrochromatography. *J. Chromatogr. A* **2004**, *1044*, 267–270. [[CrossRef](#)] [[PubMed](#)]
86. Sakai-Kato, K.; Kato, M.; Nakakuki, H.; Toyo'oka, T. Investigation of structure and enantioselectivity of BSA-encapsulated sol-gel columns prepared for capillary electrochromatography. *J. Pharm. Biomed. Anal.* **2003**, *31*, 299–309. [[CrossRef](#)]
87. Yao, C.; Qi, L.; Qiao, J.; Zhang, H.; Wang, F.; Chen, Y.; Yang, G. High-performance affinity monolith chromatography for chiral separation and determination of enzyme kinetic constants. *Talanta* **2010**, *82*, 1332–1337. [[CrossRef](#)] [[PubMed](#)]
88. Sinner, F.M.; Buchmeiser, M.R. Ring-opening metathesis polymerization: Access to a new class of functionalized, monolithic stationary phases for liquid chromatography. *Angew. Chem. Int. Ed. Engl.* **2000**, *39*, 1433–1436. [[CrossRef](#)]
89. Mohammad, J.; Li, Y.-M.; El-Ahmad, M.; Nakazato, K.; Pettersson, G.; Hjertéan, S. Chiral-recognition chromatography of β -blockers on continuous polymer beds with immobilized cellulase as enantioselective protein. *Chirality* **1993**, *5*, 464–470. [[CrossRef](#)]
90. Mallik, R.; Hage, D.S. Affinity monolith chromatography. *J. Sep. Sci.* **2006**, *29*, 1686–1704. [[CrossRef](#)] [[PubMed](#)]
91. Yoo, M.J.; Hage, D.S. Affinity monolith chromatography: Principles and recent developments. In *Monolithic Chromatography and Its Modern Applications*; Wang, P.G., Ed.; ILM Publications: St. Albans, UK, 2010; pp. 3–25.
92. Pfau Miller, E.L.; Paulemond, M.L.; Dupper, C.M.; Hage, D.S. Affinity monolith chromatography: A review of principles and recent analytical applications. *Anal. Bioanal. Chem.* **2013**, *405*, 2133–2145. [[CrossRef](#)] [[PubMed](#)]
93. Yoo, M.J.; Hage, D.S. Evaluation of silica monoliths in affinity microcolumns for high-throughput analysis of drug-protein interactions. *J. Sep. Sci.* **2009**, *32*, 2776–2785. [[CrossRef](#)] [[PubMed](#)]
94. Mallik, R.; Jiang, T.; Hage, D.S. High-performance affinity monolith chromatography: Development and evaluation of human serum albumin columns. *Anal. Chem.* **2004**, *76*, 7013–7022. [[CrossRef](#)] [[PubMed](#)]

95. Li, T.; Yu, Q.W.; Lin, B.; Feng, Y.Q. Synthesis and chromatographic properties of a chiral stationary phase derived from bovine serum albumin immobilized on magnesia-zirconia using phosphonate spacers. *J. Sep. Sci.* **2007**, *30*, 804–812. [[CrossRef](#)] [[PubMed](#)]
96. Park, J.H.; Ryu, J.K.; Park, J.K.; McNeff, C.V.; Carr, P.W. Separation of enantiomers on bovine serum albumin coated zirconia in reversed-phase liquid chromatography. *Chromatographia* **2001**, *53*, 405–408. [[CrossRef](#)]
97. Lammerhofer, M. Chiral recognition by enantioselective liquid chromatography: Mechanisms and modern chiral stationary phases. *J. Chromatogr. A* **2010**, *1217*, 814–856. [[CrossRef](#)] [[PubMed](#)]
98. Liu, Z.; Zou, H.F.; Ni, J.Y.; Zhang, Y.K. Open tubular capillary electrochromatography with adsorbed stationary phase. *Anal. Chim. Acta* **1999**, *378*, 73–76. [[CrossRef](#)]
99. Liu, Z.; Otsuka, K.; Terabe, S. Chiral separation by open tubular capillary electrochromatography with adsorbed avidin as a stationary phase. *J. Sep. Sci.* **2001**, *24*, 17–26. [[CrossRef](#)]
100. Liu, Z.; Otsuka, K.; Terabe, S.; Motokawa, M.; Tanaka, N. Physically adsorbed chiral stationary phase of avidin on monolithic silica column for capillary electrochromatography and capillary liquid chromatography. *Electrophoresis* **2002**, *23*, 2973–2981. [[CrossRef](#)]
101. Nakamura, M.; Kiyohara, S.; Saito, K.; Sugita, K.; Sugo, T. Chiral separation of DL-tryptophan using porous membranes containing multilayered bovine serum albumin crosslinked with glutaraldehyde. *J. Chromatogr. A* **1998**, *822*, 53–58. [[CrossRef](#)]
102. Taleb, N.L.; Millot, M.C.; Seville, B. Enantioselectivity properties of human serum albumin immobilized on anion-exchangers based on polyvinylimidazole-coated silica—Effect of protein loading on separation properties. *J. Chromatogr. A* **1997**, *776*, 45–53. [[CrossRef](#)]
103. Millot, M.C.; Servagent-Noinville, S.; Taleb, N.L.; Baron, M.H.; Revault, M.; Seville, B. Structural changes of human serum albumin immobilized on chromatographic supports: A high-performance liquid chromatography and Fourier-transform infrared spectroscopy study. *J. Chromatogr. B* **2001**, *753*, 101–113. [[CrossRef](#)]
104. Harada, K.; Yuan, Q.; Nakayama, M.; Sugii, A. Effects of organic modifiers on the chiral recognition by different types of silica-immobilized bovine serum albumin. *J. Chromatogr. A* **1996**, *740*, 207–213. [[CrossRef](#)]
105. Marle, I.; Karlsson, A.; Pettersson, C. Separation of enantiomers using α -chymotrypsin-silica as a chiral stationary phase. *J. Chromatogr. A* **1992**, *604*, 185–196. [[CrossRef](#)]
106. Han, N.Y.; Hautala, J.T.; Bo, T.; Wiedmer, S.K.; Riekkola, M.L. Immobilization of phospholipid-avidin on fused-silica capillaries for chiral separation in open-tubular capillary electrochromatography. *Electrophoresis* **2006**, *27*, 1502–1509. [[CrossRef](#)] [[PubMed](#)]
107. Kim, H.S.; Hage, D.S. Immobilization methods for affinity chromatography. In *Handbook of Affinity Chromatography*, 2nd ed.; Hage, D.S., Ed.; CRC Press: Boca Raton, FL, USA, 2006; pp. 35–78.
108. Henriksson, H.; Munoz, I.G.; Isaksson, R.; Pettersson, G.; Johansson, G. Cellobiohydrolase 58 (P.c. Cel 7D) is complementary to the homologous CBH I (T.r. Cel 7A) in enantioseparations. *J. Chromatogr. A* **2000**, *898*, 63–74. [[CrossRef](#)]
109. Kim, H.S.; Kye, Y.S.; Hage, D.S. Development and evaluation of *N*-hydroxysuccinimide-activated silica for immobilizing human serum albumin in liquid chromatography columns. *J. Chromatogr. A* **2004**, *1049*, 51–61. [[CrossRef](#)]
110. Nystrom, A.; Strandberg, A.; Aspegren, A.; Behr, S.; Karlsson, A. Use of immobilized amyloglucosidase as chiral selector in chromatography. Immobilization and performance in liquid chromatography. *Chromatographia* **1999**, *50*, 209–214. [[CrossRef](#)]
111. Hage, D.S.; Austin, J. High-performance affinity chromatography and immobilized serum albumin as probes for drug- and hormone-protein binding. *J. Chromatogr. B* **2000**, *739*, 39–54. [[CrossRef](#)]
112. Tittelbach, V.; Gilpin, R.K. Species Dependency of the Liquid-Chromatographic Properties of Silica-Immobilized Serum Albumins. *Anal. Chem.* **1995**, *67*, 44–47. [[CrossRef](#)] [[PubMed](#)]
113. Koidl, J.; Hodl, H.; Schmid, M.G.; Konrad, M.; Petschauer, S.; Kostner, G.M.; Gubitz, G. Chiral separation of T₃ enantiomers using stereoselective antibodies as a selector in micro-HPLC. *J. Biochem. Biophys. Methods* **2006**, *69*, 33–42. [[CrossRef](#)] [[PubMed](#)]
114. Lua, A.C.; Chou, T.Y. Preparation of immunoaffinity columns for direct enantiomeric separation of amphetamine and/or methamphetamine. *J. Chromatogr. A* **2002**, *967*, 191–199. [[CrossRef](#)]

115. Oda, Y.; Asakawa, N.; Abe, S.; Yoshida, Y.; Sato, T. Avidin protein-conjugated column for direct injection analysis of drug enantiomers in plasma by high-performance liquid chromatography. *J. Chromatogr. B* **1991**, *572*, 133–141. [[CrossRef](#)]
116. Oda, Y.; Ohe, H.; Asakawa, N.; Yoshida, Y.; Sato, T.; Nakagawa, T. Resolution of 1-benzyl-4-[(5, 6-dimethoxy-1-indanon)-2-yl] methylpiperidine hydrochloride enantiomers in plasma by high-performance liquid-chromatography with direct injection into avidin-conjugated column. *J. Liq. Chromatogr.* **1992**, *15*, 2997–3012. [[CrossRef](#)]
117. Haginaka, J.; Seyama, C.; Murashima, T.; Fujima, H.; Wada, H. Retention and Enantioselective Properties of Ovomucoid-Bonded Silica Columns—Influence of Physical-Properties of Base Materials and Spacer Length. *J. Chromatogr. A* **1994**, *660*, 275–281. [[CrossRef](#)]
118. Pinkerton, T.C.; Howe, W.J.; Ulrich, E.L.; Comiskey, J.P.; Haginaka, J.; Murashima, T.; Walkenhorst, W.F.; Westler, W.M.; Markley, J.L. Protein binding chiral discrimination of HPLC stationary phases made with whole, fragmented, and third domain turkey ovomucoid. *Anal. Chem.* **1995**, *67*, 2354–2367. [[CrossRef](#)] [[PubMed](#)]
119. Domenici, E.; Bertucci, C.; Salvadori, P.; Felix, G.; Cahagne, I.; Motellier, S.; Wainer, I.W. Synthesis and Chromatographic Properties of an HPLC Chiral Stationary Phase Based Upon Human Serum-Albumin. *Chromatographia* **1990**, *29*, 170–176. [[CrossRef](#)]
120. Felix, G.; Liu, M. New method for grafting proteins on silica gel. *Biol. Sci.* **1989**, *8*, 2–6.
121. Felix, G.; Descorps, V. Stereochemical resolution of racemates, in HPLC, using a chiral stationary phase based upon immobilized α -chymotrypsin. I. Structural chiral separations. *Chromatographia* **1999**, *49*, 595–605. [[CrossRef](#)]
122. Marle, I.; Jonsson, S.; Isaksson, R.; Pettersson, C.; Pettersson, G. Chiral stationary phases based on intact and fragmented cellobiohydrolase-I immobilized on silica. *J. Chromatogr. A* **1993**, *648*, 333–347. [[CrossRef](#)]
123. Massolini, G.; Calleri, E.; De Lorenzi, E.; Pregnolato, M.; Terreni, M.; Felix, G.; Gandini, C. Immobilized penicillin G acylase as reactor and chiral selector in liquid chromatography. *J. Chromatogr. A* **2001**, *921*, 147–160. [[CrossRef](#)]
124. Bi, C.; Jackson, A.; Vargas-Badilla, J.; Li, R.; Rada, G.; Anguizola, J.; Pfaunmiller, E.; Hage, D.S. Entrapment of α_1 -acid glycoprotein in high-performance affinity columns for drug-protein binding studies. *J. Chromatogr. B* **2016**, *1021*, 188–196. [[CrossRef](#)] [[PubMed](#)]
125. Jackson, A.J.; Anguizola, J.; Pfaunmiller, E.L.; Hage, D.S. Use of entrapment and high-performance affinity chromatography to compare the binding of drugs and site-specific probes with normal and glycated human serum albumin. *Anal. Bioanal. Chem.* **2013**, *405*, 5833–5841. [[CrossRef](#)] [[PubMed](#)]
126. Jackson, A.J.; Xuan, H.; Hage, D.S. Entrapment of proteins in glycogen-capped and hydrazide-activated supports. *Anal. Biochem.* **2010**, *404*, 106–108. [[CrossRef](#)] [[PubMed](#)]
127. Peters, T., Jr. *All About Albumin: Biochemistry, Genetics, and Medical Applications*; Academic Press: San Diego, CA, USA, 1996.
128. Wainer, I.W. *Drug Stereochemistry: Analytical Methods and Pharmacology*, 2nd ed.; Marcel Dekker: New York, NY, USA, 1993.
129. Losso, J.N.; Vanderstoep, J.; Nakai, S. Removal of bovine serum albumin from cow's milk using chicken egg-yolk antibodies immobilized on chitosan gel. *Food Agric. Immunol.* **1998**, *10*, 47–56. [[CrossRef](#)]
130. Ascoli, G.A.; Domenici, E.; Bertucci, C. Drug binding to human serum albumin: Abridged review of results obtained with high-performance liquid chromatography and circular dichroism. *Chirality* **2006**, *18*, 667–679. [[CrossRef](#)] [[PubMed](#)]
131. Sudlow, G.; Birkett, D.J.; Wade, D.N. Further Characterization of Specific Drug Binding-Sites on Human-Serum Albumin. *Mol. Pharmacol.* **1976**, *12*, 1052–1061. [[PubMed](#)]
132. Petitpas, I.; Bhattacharya, A.A.; Twine, S.; East, M.; Curry, S. Crystal structure analysis of warfarin binding to human serum albumin—Anatomy of drug site I. *J. Biol. Chem.* **2001**, *276*, 22804–22809. [[CrossRef](#)] [[PubMed](#)]
133. Kragh-Hansen, U.; Chuang, V.T.G.; Otagiri, M. Practical aspects of the ligand-binding and enzymatic properties of human serum albumin. *Biol. Pharm. Bull.* **2002**, *25*, 695–704. [[CrossRef](#)] [[PubMed](#)]
134. Noctor, T.A.G.; Pham, C.D.; Kaliszan, R.; Wainer, I.W. Stereochemical Aspects of Benzodiazepine Binding to Human Serum-Albumin. I. Enantioselective High-Performance Liquid Affinity Chromatographic Examination of Chiral and Achiral Binding Interactions between 1,4-Benzodiazepines and Human Serum-Albumin. *Mol. Pharmacol.* **1992**, *42*, 506–511. [[PubMed](#)]

135. Allenmark, S.; Andersson, S. Optical Resolution of Some Biologically-Active Compounds by Chiral Liquid-Chromatography on BSA-Silica (Resolvosil) Columns. *Chirality* **1989**, *1*, 154–160. [[CrossRef](#)]
136. Loun, B.; Hage, D.S. Characterization of thyroxine-albumin binding using high-performance affinity chromatography. I. Interactions at the warfarin and indole sites of albumin. *J. Chromatogr. B* **1992**, *579*, 225–235. [[CrossRef](#)]
137. Wang, Q.Y.; Xiong, Y.J.; Lu, B.Z.; Fan, J.; Zheng, S.R.; Zhang, W.G. Effect of chromatographic conditions on enantioseparation of bovine serum albumin chiral stationary phase in HPLC and thermodynamic studies. *Chirality* **2013**, *25*, 487–492. [[CrossRef](#)] [[PubMed](#)]
138. Loun, B.; Hage, D.S. Characterization of thyroxine-albumin binding using high-performance affinity-chromatography II. Comparison of the binding of thyroxine, triiodothyronines and related compounds at the warfarin and indole sites of human serum albumin. *J. Chromatogr. B* **1995**, *665*, 303–314. [[CrossRef](#)]
139. Allenmark, S. Optical resolution by liquid-chromatography on immobilized bovine serum-albumin. *J. Liq. Chromatogr.* **1986**, *9*, 425–442. [[CrossRef](#)]
140. Fitos, I.; Visy, J.; Simonyi, M.; Hermansson, J. Chiral high-performance liquid chromatographic separations of vinca alkaloid analogues on α_1 -acid glycoprotein and human serum albumin columns. *J. Chromatogr. A* **1992**, *609*, 163–171. [[CrossRef](#)]
141. Lu, J.; Ye, F.; Zhang, A.; Wei, Z.; Peng, Y.; Zhao, S. Preparation and characterization of silica monolith modified with bovine serum albumin-gold nanoparticles conjugates and its use as chiral stationary phases for capillary electrochromatography. *J. Sep. Sci.* **2011**, *34*, 2329–2336. [[CrossRef](#)] [[PubMed](#)]
142. Hong, T.; Zheng, Y.; Hu, W.; Ji, Y. Preparation and evaluation of bovine serum albumin immobilized chiral monolithic column for affinity capillary electrochromatography. *Anal. Biochem.* **2014**, *464*, 43–50. [[CrossRef](#)] [[PubMed](#)]
143. Ma, L.; Li, J.; Zhao, J.; Liao, H.; Xu, L.; Shi, Z.G. Penetrable silica microspheres for immobilization of bovine serum albumin and their application to the study of the interaction between imatinib mesylate and protein by frontal affinity chromatography. *Anal. Bioanal. Chem.* **2016**, *408*, 805–814. [[CrossRef](#)] [[PubMed](#)]
144. Liang, R.P.; Wang, X.N.; Liu, C.M.; Meng, X.Y.; Qiu, J.D. Facile preparation of protein stationary phase based on polydopamine/graphene oxide platform for chip-based open tubular capillary electrochromatography enantioseparation. *J. Chromatogr. A* **2014**, *1323*, 135–142. [[CrossRef](#)] [[PubMed](#)]
145. Fournier, T.; Medjoubi-N, N.; Porquet, D. Alpha-1-acid glycoprotein. *Biochim. Biophys. Acta* **2000**, *1482*, 157–171. [[CrossRef](#)]
146. Zsila, F.; Iwao, Y. The drug binding site of human α_1 -acid glycoprotein: Insight from induced circular dichroism and electronic absorption spectra. *Biochim. Biophys. Acta* **2007**, *1770*, 797–809. [[CrossRef](#)] [[PubMed](#)]
147. Cecilian, F.; Pocacqua, V. The acute phase protein α_1 -acid glycoprotein: A model for altered glycosylation during diseases. *Curr. Protein Pept. Sci.* **2007**, *8*, 91–108. [[CrossRef](#)] [[PubMed](#)]
148. Schmid, K.; Nimerg, R.B.; Kimura, A.; Yamaguchi, H.; Binette, J.P. The carbohydrate units of human plasma α_1 -acid glycoprotein. *Biochim. Biophys. Acta* **1977**, *492*, 291–302. [[CrossRef](#)]
149. Filip, Z.; Jan, K.; Vendula, S.; Jana, K.Z.; Kamil, M.; Kamil, K. Albumin and α_1 -acid glycoprotein: Old acquaintances. *Expert Opin. Drug Metab. Toxicol.* **2013**, *9*, 943–954. [[CrossRef](#)] [[PubMed](#)]
150. Israili, Z.H.; Dayton, P.G. Human alpha-1-glycoprotein and its interactions with drugs. *Drug Metab. Rev.* **2001**, *33*, 161–235. [[CrossRef](#)] [[PubMed](#)]
151. Burton, M.E.; Shaw, L.M.; Schentag, J.J.; Evans, W.E. *Applied Pharmacokinetics and Pharmacodynamics: Principles of Therapeutic Drug Monitoring*; Lippincott: Baltimore, MD, USA, 2006.
152. Schonfeld, D.L.; Ravelli, R.B.; Mueller, U.; Skerra, A. The 1.8-Å crystal structure of alpha1-acid glycoprotein (Orosomucoid) solved by UV RIP reveals the broad drug-binding activity of this human plasma lipocalin. *J. Mol. Biol.* **2008**, *384*, 393–405. [[CrossRef](#)] [[PubMed](#)]
153. Taguchi, K.; Nishi, K.; Chuang, V.T.G.; Maruyama, T.; Otagiri, M. Molecular Aspects of Human Alpha-1 Acid Glycoprotein—Structure and Function. In *Acute Phase Proteins*; Janciauskiene, S., Ed.; InTech: Rijeka, Croatia, 2013; pp. 139–162.
154. Mallik, R.; Xuan, H.; Guiochon, G.; Hage, D.S. Immobilization of alpha1-acid glycoprotein for chromatographic studies of drug-protein binding II. correction for errors in association constant measurements. *Anal. Biochem.* **2008**, *376*, 154–156. [[CrossRef](#)] [[PubMed](#)]

155. Karlsson, A.; Aspegren, A. The use of mobile phase pH and column temperature to reverse the retention order of enantiomers on chiral-AGP®. *Chromatographia* **1998**, *47*, 189–196. [[CrossRef](#)]
156. Loeser, E.; Yowell, G.; Drumm, P. Effect of tertiary alcohol additives on enantioselectivity of the chiral-AGP column. *J. Liq. Chromatogr. Relat. Technol.* **2006**, *29*, 2625–2640. [[CrossRef](#)]
157. Breton, D.; Buret, D.; Clair, P.; Lafosse, A. Chiral separation of atropine by high-performance liquid chromatography. *J. Chromatogr. A* **2005**, *1088*, 104–109. [[CrossRef](#)] [[PubMed](#)]
158. Enquist, M.; Hermansson, J. Separation and quantitation of (R)- and (S)-atenolol in human plasma and urine using an α_1 -AGP column. *Chirality* **1989**, *1*, 209–215. [[CrossRef](#)] [[PubMed](#)]
159. Locatelli, I.; Kmetec, V.; Mrhar, A.; Grabnar, I. Determination of warfarin enantiomers and hydroxylated metabolites in human blood plasma by liquid chromatography with achiral and chiral separation. *J. Chromatogr. B* **2005**, *818*, 191–198. [[CrossRef](#)] [[PubMed](#)]
160. Sandstrom, E.; Lennernas, H.; Ohlen, K.; Karlsson, A. Enantiomeric separation of verapamil and norverapamil using Chiral-AGP® as the stationary phase. *J. Pharm. Biomed. Anal.* **1999**, *21*, 43–49. [[CrossRef](#)]
161. Soares, R.; Singh, A.K.; Kedor-Hackmann, E.R.; Santoro, M.I. Determination of atropine enantiomers in ophthalmic solutions by liquid chromatography using a Chiral AGP column. *J. AOAC Int.* **2009**, *92*, 1663–1672. [[PubMed](#)]
162. Etter, M.L.; George, S.; Graybiel, K.; Eichhorst, J.; Lehotay, D.C. Determination of free and protein-bound methadone and its major metabolite EDDP: Enantiomeric separation and quantitation by LC/MS/MS. *Clin. Biochem.* **2005**, *38*, 1095–1102. [[CrossRef](#)] [[PubMed](#)]
163. Du, J.B.; Ma, Z.Y.; Zhang, Y.F.; Wang, T.; Chen, X.Y.; Zhong, D.F. Enantioselective determination of ornidazole in human plasma by liquid chromatography-tandem mass spectrometry on a Chiral-AGP column. *J. Pharm. Biomed. Anal.* **2013**, *86*, 182–188. [[CrossRef](#)] [[PubMed](#)]
164. Kawabata, K.; Samata, N.; Urasaki, Y.; Fukazawa, I.; Uchida, N.; Uchida, E.; Yasuhara, H. Enantioselective determination of azelnidipine in human plasma using liquid chromatography-tandem mass spectrometry. *J. Chromatogr. B* **2007**, *852*, 389–397. [[CrossRef](#)] [[PubMed](#)]
165. Massolini, G.; Temporini, C.; Calleri, E. Penicillin G acylase as chiral selector in LC and CE: Exploring the origins of enantioselectivity. *J. Chromatogr. B* **2008**, *875*, 20–29. [[CrossRef](#)] [[PubMed](#)]
166. Temporini, C.; Calleri, E.; Fracchiolla, G.; Carbonara, G.; Loiodice, F.; Lavecchia, A.; Tortorella, P.; Brusotti, G.; Massolini, G. Enantiomeric separation of 2-aryloxyalkyl- and 2-arylalkyl-2-aryloxyacetic acids on a penicillin G acylase-based chiral stationary phase: Influence of the chemical structure on retention and enantioselectivity. *J. Pharm. Biomed. Anal.* **2007**, *45*, 211–218. [[CrossRef](#)] [[PubMed](#)]
167. Lavecchia, A.; Cosconati, S.; Novellino, E.; Calleri, E.; Temporini, C.; Massolini, G.; Carbonara, G.; Fracchiolla, G.; Loiodice, F. Exploring the molecular basis of the enantioselective binding of penicillin G acylase towards a series of 2-aryloxyalkanoic acids: A docking and molecular dynamics study. *J. Mol. Graph. Model.* **2007**, *25*, 773–783. [[CrossRef](#)] [[PubMed](#)]
168. Gotti, R.; Fiori, J.; Calleri, E.; Temporini, C.; Lubda, D.; Massolini, G. Chiral capillary liquid chromatography based on penicillin G acylase immobilized on monolithic epoxy silica column. *J. Chromatogr. A* **2012**, *1234*, 45–49. [[CrossRef](#)] [[PubMed](#)]
169. den Haan, R.; Kroukamp, H.; van Zyl, J.-H.D.; van Zyl, W.H. Cellobiohydrolase secretion by yeast: Current state and prospects for improvement. *Process Biochem.* **2013**, *48*, 1–12. [[CrossRef](#)]
170. Isaksson, R.; Pettersson, C.; Pettersson, G.; Jonsson, S.; Stalberg, J.; Hermansson, J.; Marle, I. Cellulases as chiral selectors. *Trends Anal. Chem.* **1994**, *13*, 431–439. [[CrossRef](#)]
171. Divne, C.; Stahlberg, J.; Reinikainen, T.; Ruohonen, L.; Pettersson, G.; Knowles, J.K.; Teeri, T.T.; Jones, T.A. The three-dimensional crystal structure of the catalytic core of cellobiohydrolase I from *Trichoderma reesei*. *Science* **1994**, *265*, 524–528. [[CrossRef](#)] [[PubMed](#)]
172. Marle, I.; Erlandsson, P.; Hansson, L.; Isaksson, R.; Pettersson, C.; Pettersson, G. Separation of enantiomers using cellulase (CBH-I) silica as a chiral stationary phase. *J. Chromatogr. A* **1991**, *586*, 233–248. [[CrossRef](#)]
173. Fornstedt, T.; Sajonz, P.; Guiochon, G. Thermodynamic study of an unusual chiral separation. Propranolol enantiomers on an immobilized cellulase. *J. Am. Chem. Soc.* **1997**, *119*, 1254–1264. [[CrossRef](#)]
174. Henriksson, H.; Stahlberg, J.; Isaksson, R.; Pettersson, G. The active sites of cellulases are involved in chiral recognition: A comparison of cellobiohydrolase 1 and endoglucanase 1. *FEBS Lett.* **1996**, *390*, 339–344. [[CrossRef](#)]

175. Bagnall, J.P.; Evans, S.E.; Wort, M.T.; Lubben, A.T.; Kasprzyk-Hordern, B. Using chiral liquid chromatography quadrupole time-of-flight mass spectrometry for the analysis of pharmaceuticals and illicit drugs in surface and wastewater at the enantiomeric level. *J. Chromatogr. A* **2012**, *1249*, 115–129. [[CrossRef](#)] [[PubMed](#)]
176. Castrignano, E.; Lubben, A.; Kasprzyk-Hordern, B. Enantiomeric profiling of chiral drug biomarkers in wastewater with the usage of chiral liquid chromatography coupled with tandem mass spectrometry. *J. Chromatogr. A* **2016**, *1438*, 84–99. [[CrossRef](#)]
177. Boyer, P.D. *The Enzymes III Hydrolysis: Peptide Bonds*, 3rd ed.; Academic Press: New York, NY, USA, 1971.
178. Ma, W.Z.; Tang, C.; Lai, L.H. Specificity of trypsin and chymotrypsin: Loop-motion-controlled dynamic correlation as a determinant. *Biophys. J.* **2005**, *89*, 1183–1193. [[CrossRef](#)] [[PubMed](#)]
179. Wainer, I.W.; Jadaud, P.; Schombaum, G.R.; Kadodkar, S.V.; Henry, M.P. Enzymes as HPLC stationary phases for chiral resolutions—Initial investigations with α -chymotrypsin. *Chromatographia* **1988**, *25*, 903–907. [[CrossRef](#)]
180. Jadaud, P.; Wainer, I.W. Stereochemical recognition of enantiomeric and diastereomeric dipeptides by high-performance liquid-chromatography on a chiral stationary phase based upon immobilized α -chymotrypsin. *J. Chromatogr. A* **1989**, *476*, 165–174. [[CrossRef](#)]
181. Iredale, J.; Aubry, A.F.; Wainer, I. The effects of pH and alcoholic organic modifiers on the direct separation of some acidic, basic and neutral compounds on a commercially available ovomucoid column. *Chromatographia* **1991**, *31*, 329–334. [[CrossRef](#)]
182. Oda, Y.; Asakawa, N.; Kajima, T.; Yoshida, Y.; Sato, T. On-line determination and resolution of verapamil enantiomers by high-performance liquid chromatography with column switching. *J. Chromatogr. A* **1991**, *541*, 411–418. [[CrossRef](#)]
183. Haginaka, J.; Seyama, C.; Murashima, T. Retentive and Enantioselective Properties of Ovomucoid-Bonded Silica Columns—Influence of Protein Purity and Isolation Method. *J. Chromatogr. A* **1995**, *704*, 279–287. [[CrossRef](#)]
184. Miwa, T.; Ichikawa, M.; Tsuno, M.; Hattori, T.; Miyakawa, T.; Kayano, M.; Miyake, Y. Direct liquid-chromatographic resolution of racemic compounds—Use of ovomucoid as a column ligand. *Chem. Pharm. Bull.* **1987**, *35*, 682–686. [[CrossRef](#)]
185. Liu, K.; Dai, X.; Zhong, D.; Chen, X. Quantitative determination of ondansetron in human plasma by enantioselective liquid chromatography-tandem mass spectrometry. *J. Chromatogr. B* **2008**, *864*, 129–136. [[CrossRef](#)] [[PubMed](#)]
186. Liu, K.; Zhong, D.; Chen, X. Enantioselective determination of doxazosin in human plasma by liquid chromatography-tandem mass spectrometry using ovomucoid chiral stationary phase. *J. Chromatogr. B* **2010**, *878*, 2415–2420. [[CrossRef](#)] [[PubMed](#)]
187. Landsteiner, K. *The Specificity of Serological Reactions*; Charles C Thomas: Springfield, IL, USA, 1936.
188. Hofstetter, H.; Hofstetter, O. Antibodies as tailor-made chiral selectors for detection and separation of stereoisomers. *TrAC Trends Anal. Chem.* **2005**, *24*, 869–879. [[CrossRef](#)]
189. Hofstetter, H.; Cary, J.R.; Eleniste, P.P.; Hertweck, J.K.; Lindstrom, H.J.; Ranieri, D.I.; Smith, G.B.; Undesser, L.P.; Zeleke, J.M.; Zeleke, T.K. New developments in the production and use of stereoselective antibodies. *Chirality* **2005**, *17*, S9–S18. [[CrossRef](#)] [[PubMed](#)]
190. Franco, E.J.; Hofstetter, H.; Hofstetter, O. Determination of lactic acid enantiomers in human urine by high-performance immunoaffinity LC-MS. *J. Pharm. Biomed. Anal.* **2009**, *49*, 1088–1091. [[CrossRef](#)] [[PubMed](#)]
191. Hofstetter, O.; Lindstrom, H.; Hofstetter, H. Effect of the mobile phase on antibody-based enantiomer separations of amino acids in high-performance liquid chromatography. *J. Chromatogr. A* **2004**, *1049*, 85–95. [[CrossRef](#)]
192. Zeleke, J.M.; Smith, G.B.; Hofstetter, H.; Hofstetter, O. Enantiomer separation of amino acids in immunoaffinity micro LC-MS. *Chirality* **2006**, *18*, 544–550. [[CrossRef](#)] [[PubMed](#)]
193. Zeleke, T.K.; Zeleke, J.M.; Hofstetter, H.; Hofstetter, O. Stereoselective antibodies to free α -hydroxy acids. *J. Mol. Recognit.* **2005**, *18*, 334–340. [[CrossRef](#)] [[PubMed](#)]
194. Livnah, O.; Bayer, E.A.; Wilchek, M.; Sussman, J.L. Three-dimensional structures of avidin and the avidin-biotin complex. *Proc. Natl. Acad. Sci. USA* **1993**, *90*, 5076–5080. [[CrossRef](#)] [[PubMed](#)]
195. Haque, A.; Stewart, J.T. Chiral separations of selected pharmaceuticals on avidin column. *J. Liq. Chromatogr. Relat. Technol.* **1998**, *21*, 2675–2687. [[CrossRef](#)]

196. Kitagawa, F.; Inoue, K.; Hasegawa, T.; Kamiya, M.; Okamoto, Y.; Kawase, M.; Otsuka, K. Chiral separation of acidic drug components by open tubular electrochromatography using avidin immobilized capillaries. *J. Chromatogr. A* **2006**, *1130*, 219–226. [[CrossRef](#)] [[PubMed](#)]
197. Okamoto, Y.; Ikawa, Y.; Kitagawa, F.; Otsuka, K. Preparation of fritless capillary using avidin immobilized magnetic particles for electrochromatographic chiral separation. *J. Chromatogr. A* **2007**, *1143*, 264–269. [[CrossRef](#)] [[PubMed](#)]
198. Olsson, J.; Blomberg, L.G. Enantioseparation of omeprazole and its metabolite 5-hydroxyomeprazole using open tubular capillary electrochromatography with immobilized avidin as chiral selector. *J. Chromatogr. B* **2008**, *875*, 329–332. [[CrossRef](#)] [[PubMed](#)]
199. Ravelet, C.; Michaud, M.; Ravel, A.; Grosset, C.; Villet, A.; Peyrin, E. Streptavidin chiral stationary phase for the separation of adenosine enantiomers. *J. Chromatogr. A* **2004**, *1036*, 155–160. [[CrossRef](#)] [[PubMed](#)]



© 2016 by the authors; licensee MDPI, Basel, Switzerland. This article is an open access article distributed under the terms and conditions of the Creative Commons Attribution (CC-BY) license (<http://creativecommons.org/licenses/by/4.0/>).