



Analytic Modeling of Neural Tissue: I. A Spherical Bidomain

Benjamin L. Schwartz¹ · Munish Chauhan¹ ·
Rosalind J. Sadleir¹

Received: 3 December 2015 / Accepted: 1 September 2016 / Published online: 09 September 2016
© 2016 Schwartz et al. This article is distributed under the terms of the Creative Commons Attribution 4.0 International License (<http://creativecommons.org/licenses/by/4.0/>), which permits unrestricted use, distribution, and reproduction in any medium, provided you give appropriate credit to the original author(s) and the source, provide a link to the Creative Commons license, and indicate if changes were made.

Abstract Presented here is a model of neural tissue in a conductive medium stimulated by externally injected currents. The tissue is described as a conductively isotropic bidomain, i.e. comprised of intra and extracellular regions that occupy the same space, as well as the membrane that divides them, and the injection currents are described as a pair of source and sink points. The problem is solved in three spatial dimensions and defined in spherical coordinates (r, θ, ϕ) . The system of coupled partial differential equations is solved by recasting the problem to be in terms of the membrane and a monodomain, interpreted as a weighted average of the intra and extracellular domains. The membrane and monodomain are defined by the scalar Helmholtz and Laplace equations, respectively, which are both separable in spherical coordinates. Product solutions are thus assumed and given through certain transcendental functions. From these electrical potentials, analytic expressions for current density are derived and from those fields the magnetic flux density is calculated. Numerical examples are considered wherein the interstitial conductivity is varied, as well as the limiting case of the problem simplifying to two dimensions due to azimuthal independence. Finally, future modeling work is discussed.

Keywords Bidomain · Analytic modeling

✉ R.J. Sadleir
Rosalind.Sadleir@asu.edu

B.L. Schwartz
BenjiTheGreat@asu.edu

M. Chauhan
mchauha4@asu.edu

¹ School of Biological and Health Systems Engineering, Arizona State University, 501 E Tyler Mall, Tempe, AZ 85287-9709, USA

1 Introduction

The purpose of this paper is to model the electric potentials in and around a finite volume of excitable tissue that result from externally applied injection current. Our motivation toward quantitative understanding of the distributed electrophysiology of excitable tissue is due to the emergence of magnetic resonance electrical impedance tomography (MREIT) [1]. The contrast in MREIT—as well as in another MR technique, Electrical Properties Tomography (EPT) [2]—depends on the electrical property distribution throughout the region of interest. Briefly, in an MREIT scan, current is injected into an object in concert with the pulse sequence of an MRI scanner. This current will induce a magnetic field [3] whose distribution throughout the entire region can be captured via the phase component of the reconstructed MR images. Electrical conductivity maps may then be constructed from the phase data using the Laplacian of the z component of the induced magnetic field, $\nabla^2 B_z$ [4, 5]. MREIT has already shown clinical promise, e.g. lesion characterization [6], but it is the possibility of monitoring brain activity with MREIT [7] that especially motivates this study. If MREIT is to be used to detect neural activity it is useful to estimate the influence of MREIT imaging currents on both active and passive tissues. Therefore, we have constructed from first principles an analytic mathematical model of tissue stimulated by injection currents, not unlike that of an MREIT scan.

Excitable tissues are comprised of cells, discrete units through which electric signals may propagate via action potentials [8]. While many have studied and modeled the behavior of individual cells in both sub- and supra-threshold conditions, it is also very important to understand excitability behavior at the tissue level. This approach has been particularly useful in understanding cardiac activity [9]. The bidomain model [10], a generalization of the cable equation [11], has been employed in this area avoiding the discrete constructs of tissue, assuming instead a continuum of two domains, intra- and extracellular, connected by a membrane and that occupy the same volume [12]. Each domain represents an average, then, of all its individual components. MR imaging also necessarily involves averaging over tissues. If we seek to image neural activity using MREIT it is convenient to use a geometrically simple model to predict changes in these images created by neural activity.

Many authors have modeled excitable tissue with the bidomain equations, choosing the coordinate system that most closely resembles the tissue geometry. In circular cylindrical coordinates, Altman and Plonsey modeled a bundle of nerves as an infinite cylinder in an infinite conducting bath, studying first the steady state [13] and transient stimulation [14]. In the former they incrementally increased the realism of their model, going from an isotropic monodomain to an anisotropic bidomain, while in the latter they investigated the effect of fiber diameter on stimulation and impulse propagation. Henriquez et al. [15–17] and Trayanova et al. [18] investigated the merits of assuming a single fiber vs. a bundle, i.e. bidomain, of fibers when modeling an infinite cylinder of tissue excited by either a disk or a line source. They showed that the single fiber core conductor model is not an unreasonable approximation of the control region of a large bundle of fibers, but loses its validity toward the periphery of the bundle and is entirely unsatisfactory for small bundles. Plonsey and Barr showed in a two dimensional rectangular framework, except for special cases, the

bidomain approach to modeling tissue electrophysiology is not a mere generalization of one dimensional cable theory [19, 20]. They found that current flowed very differently in isotropic tissue compared to anisotropic tissue with unequal anisotropy ratios. Roth gave approximate analytic solutions to the problem of bisyncytia with unequal anisotropy ratios [21], using rectangular coordinates. His perturbation method involved expansion in a parameter defined through the anisotropy ratios. He considered two sources: an expanding wave front that was approximated with a step function, and a point source. Trayanova et al. considered the case of bidomain tissue in a uniform electric field, modeling the heart as a sphere of anisotropic tissue with a core of blood [22]. The uniform field meant that they could assume azimuthal independence, leaving only a two dimensional problem in the spherical coordinates r and θ . Heretofore none has studied a three spatial dimension bidomain problem in spherical coordinates.

Our present study is motivated by the need to understand the effect on MREIT images of excitable tissue—specifically, a ganglion excised from the abdomen of a sea slug (*Aplysia californica*)—affected by injection currents injected through electrodes set into the boundary of its artificial sea water bath [7]. We develop a model that is a dramatic simplification of the actual experiment but which still is novel for its generalization to three spherical dimensions. In and of itself this model will depict basic electrophysiological phenomena and can act as a standard against which numeric simulations such as finite element models (FEM) are held, lending credibility to those in concurrence. Seen in a broader context, this work can serve as the foundation for more and more sophisticated analytic modeling, e.g. nonlinear transmembrane currents and mixed boundary conditions.

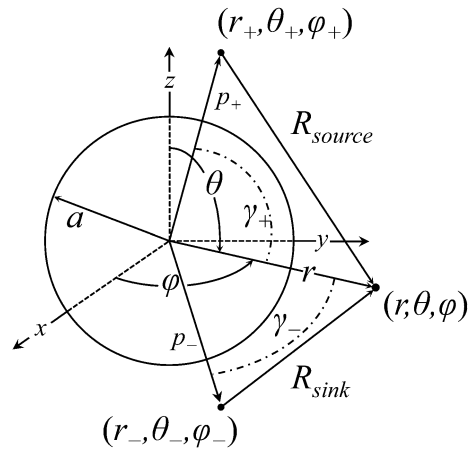
In this first study of three dimensional analysis of distributed neural tissue we model the *Aplysia* abdominal ganglion (AG), known to be electrically coupled by gap junctions [23], as an isotropic bidomain sphere, the artificial sea water bath as an infinite isotropic conducting medium, and the injection currents as source as sink points. We assume isotropic conductivity here for simplicity. However, anisotropy may be the subject of future work, as active tissue is generally anisotropic.

2 Problem Formulation

2.1 Geometry

Let there be given a sphere of isotropic excitable tissue in a uniform isotropic infinite conducting bath which also contains a point current source and a point current sink. We shall consider this problem in terms of spherical coordinates (r, θ, φ) [24]. The sphere of tissue, whose radius is $r = a$, has its center at the origin. The current source and sink points are distances $\mathbf{p}_+ = (r_+, \theta_+, \varphi_+)$ and $\mathbf{p}_- = (r_-, \theta_-, \varphi_-)$, respectively, from the origin, as shown in Fig. 1. The current source and sink are in the conducting bath, not in the tissue, i.e. $a < r_+, r_-$. The segments R_{source} and R_{sink} are the respective distances from the source and sink to any field point with position vector $\mathbf{r} = (r, \theta, \varphi)$. The angles γ_+ and γ_- , drawn with a dot-dashed line in Fig. 1 are between \mathbf{p}_+ and \mathbf{r} , and \mathbf{p}_- and \mathbf{r} , respectively.

Fig. 1 Sphere with radius $r = a$ in an infinite conducting medium with current points source and sink at $\mathbf{p}_+ = (r_+, \theta_+, \varphi_+)$ and $\mathbf{p}_- = (r_-, \theta_-, \varphi_-)$, respectively. The dot-dashed curves labeled as γ are the angles between the points' position vectors and that of a field point $\mathbf{r} = (r, \theta, \varphi)$



2.2 Bidomain Tissue

The tissue is modeled as a bidomain: two regions—intracellular and extracellular—that occupy the same volume along with the membrane that separates them. Any transmembrane current must be either from the intracellular region to the extracellular region, $I_m = \nabla \cdot \mathbf{J}_i$, or vice versa, $I_m = -\nabla \cdot \mathbf{J}_o$ [10]. From Ohm's law, $\mathbf{J} = \mathbf{E}/\rho$, where \mathbf{E} is electric field strength and ρ is resistivity [3]. Assuming that \mathbf{E} is quasistatic [25] and, further, that there is no tissue capacitance, we may express \mathbf{E} in terms of scalar potentials, ϕ , i.e. $\mathbf{E} = -\nabla\phi$. Thus we arrive at the bidomain equations,

$$\nabla^2 \phi_i = I_m \rho_i, \quad (1a)$$

$$\nabla^2 \phi_o = -I_m \rho_o, \quad (1b)$$

where the bidomain potentials, ϕ_i and ϕ_o , are the intra- and extracellular potentials, respectively, and ρ_i and ρ_o are the corresponding resistivities. Throughout this analysis we assume the membrane to be passive resistor which makes I_m depend upon the difference between ϕ_i and ϕ_o ,

$$I_m = (\phi_i - \phi_o) \frac{\beta}{R_m}, \quad (2)$$

where R_m is the membrane resistance times unit area and β is the ratio of the membrane's surface area to volume of the cell. Equations (1a)-(1b) are coupled and must be un-coupled to solve for ϕ_i and ϕ_o by recasting the system in terms of the transmembrane potential, V_m , and the monodomain potential, ψ [26],

$$V_m = \phi_i - \phi_o, \quad (3a)$$

$$\psi = \frac{\rho_o}{\rho_o + \rho_i} \phi_i + \frac{\rho_i}{\rho_o + \rho_i} \phi_o. \quad (3b)$$

The bidomain potentials are, then, given as

$$\phi_i = \frac{\rho_i}{\rho_o + \rho_i} V_m + \psi, \quad (4a)$$

$$\phi_o = -\frac{\rho_o}{\rho_o + \rho_i} V_m + \psi. \quad (4b)$$

To solve for V_m , let us subtract Eq. (1b) from Eq. (1a)

$$\nabla^2 \phi_i - \nabla^2 \phi_o = I_m(\rho_i + \rho_o), \quad (5)$$

and then insert Eq. (2),

$$\nabla^2(\phi_i - \phi_o) = \frac{\phi_i - \phi_o}{\rho_m}(\rho_i + \rho_o), \quad (6)$$

where $\rho_m = R_m/\beta$ is the membrane resistance times unit volume. If we define a length constant, $\lambda = \sqrt{\rho_m/(\rho_i + \rho_o)}$, from Eq. (3a) we can immediately see that V_m satisfies the scalar Helmholtz equation,

$$\nabla^2 V_m - \frac{V_m}{\lambda^2} = 0. \quad (7)$$

To find a relationship that only involves ψ , let us apply the Laplacian operator to Eq. (3b):

$$\nabla^2 \psi = \frac{\rho_o}{\rho_i + \rho_o} \nabla^2 \phi_i + \frac{\rho_i}{\rho_i + \rho_o} \nabla^2 \phi_o. \quad (8)$$

When we put our expressions from Eqs. (1a)-(1b) for $\nabla^2 \phi_i$ and $\nabla^2 \phi_o$ into the right side of Eq. (8), the two terms on that side add to 0, leaving us with the Laplace equation through ψ ,

$$\nabla^2 \psi = 0. \quad (9)$$

2.3 Infinite Medium

External to the tissue the potential, ϕ_e , is given by

$$\phi_e = \phi_{\text{bath}} + \phi_{\text{source}} + \phi_{\text{sink}}, \quad (10)$$

where ϕ_{source} and ϕ_{sink} are the fields due to the current point source and current point sink, respectively, and ϕ_{bath} is the secondary field [27] which satisfies the Laplace equation,

$$\nabla^2 \phi_{\text{bath}} = 0. \quad (11)$$

3 Solutions

3.1 Transmembrane Potential

The scalar Laplacian of a function f is defined as the divergence of the gradient of f [24]

$$\nabla^2 f \equiv \nabla \cdot \nabla f = \sqrt{g} \sum_{i=1}^3 \frac{\partial}{\partial u_i} \left(\frac{\sqrt{g}}{g_i} \frac{\partial f}{\partial u_i} \right), \quad (12)$$

where, in spherical coordinates, $u_1 = r$, $u_2 = \theta$, $u_3 = \varphi$, $g_1 = 1$, $g_2 = r^2$, $g_3 = r^2 \sin^2(\theta)$, and $\sqrt{g} = r^2 \sin(\theta)$, whence we arrive at the familiar expression [24]

$$\nabla^2 f = \frac{\partial^2 f}{\partial r^2} + \frac{2}{r} \frac{\partial f}{\partial r} + \frac{1}{r^2} \frac{\partial^2 f}{\partial \theta^2} + \frac{\cot(\theta)}{r^2} \frac{\partial f}{\partial \theta} + \frac{1}{r^2 \sin^2(\theta)} \frac{\partial^2 f}{\partial \varphi^2}. \quad (13)$$

If we apply Eq. (13) to Eq. (7) and assume a product solution of the transmembrane potential $V_m = R(r)\Theta(\theta)\Phi(\varphi)$, we can use the method of separation of variables to get three independent, linear, ordinary, second order, differential equations [24],

$$\frac{\partial^2 R(r)}{\partial r^2} + \frac{2}{r} \frac{\partial R(r)}{\partial r} - \left(\frac{1}{\lambda^2} + \frac{\alpha}{r^2} \right) R(r) = 0, \quad (14a)$$

$$\frac{\partial^2 \Theta(\theta)}{\partial \theta^2} + \cot(\theta) \frac{\partial \Theta(\theta)}{\partial \theta} + \left(\alpha - \frac{v^2}{\sin^2(\theta)} \right) \Theta(\theta) = 0, \quad (14b)$$

$$\frac{\partial^2 \Phi(\varphi)}{\partial \varphi^2} + v^2 \Phi(\varphi) = 0, \quad (14c)$$

where $\alpha = \mu(\mu + 1)$. Equation (14a) admits two solutions, i_μ and k_μ , the modified spherical Bessel functions of the first and second kind of order μ , respectively [28]. We only use i_μ , however, because the domain includes the origin, where k_μ is singular. The transmembrane potential, then, is

$$V_m(r, \theta, \varphi) = \sum_{\mu=0}^{\infty} \sum_{v=-\mu}^{\mu} a_{\mu v} i_\mu \left(\frac{r}{\lambda} \right) Y_\mu^v(\theta, \varphi), \quad (15)$$

where Y_μ^v is the tesseral spherical harmonic [29] of degree μ and order v , and $a_{\mu v}$ is the coefficient determined from the boundary conditions.

3.2 Monodomain Potential

For the monodomain potential, let us once again assume a product solution $\psi(r, \theta, \varphi) = \mathcal{R}(r)\Theta(\theta)\Phi(\varphi)$. Applying Eq. (13), we separate Eq. (9) into three equations. The radial equation is [24]

$$\frac{\partial^2 \mathcal{R}(r)}{\partial r^2} + \frac{2}{r} \frac{\partial \mathcal{R}(r)}{\partial r} - \frac{\alpha}{r^2} \mathcal{R}(r) = 0, \quad (16)$$

and the equations through $\Theta(\theta)$ and $\Phi(\varphi)$ are the same as in Eqs. (14b) and (14c), respectively. Like Eq. (14a), Eq. (16), too, admits two solutions, r^μ and $r^{-\mu-1}$. For the sake of analyticity, clearly we must omit $r^{-\mu-1}$, making the solution for the monodomain potential

$$\psi(r, \theta, \varphi) = \sum_{\mu=0}^{\infty} \sum_{v=-\mu}^{\mu} b_{\mu v} r^\mu Y_\mu^v(\theta, \varphi), \quad (17)$$

where $b_{\mu v}$ is the a coefficient to be determined by the boundary conditions.

3.3 External Potential

The potential from the external bath also satisfies the Laplace equation, but its domain does not include the origin, so we may immediately write its solution as

$$\phi_{\text{bath}}(r, \theta, \varphi) = \sum_{\mu=0}^{\infty} \sum_{v=-\mu}^{\mu} c_{\mu v} r^{-\mu-1} Y_\mu^v(\theta, \varphi), \quad (18)$$

where $c_{\mu v}$ is determined by the boundary conditions. The potentials due to the current source and sink points with magnitude I_o are given as [10]

$$\phi_{\text{source}} = \frac{I_o \rho_e}{4\pi R_{\text{source}}}, \quad (19a)$$

$$\phi_{\text{sink}} = -\frac{I_o \rho_e}{4\pi R_{\text{sink}}}, \quad (19b)$$

where ρ_e is the resistivity of the conducting bath, and R_{source} and R_{sink} are the distances from their respective points to any point (r, θ, φ) in the problem domain, shown in Fig. 1. To satisfy the boundary conditions, ϕ_{source} and ϕ_{sink} must be written in terms of r, θ , and φ , the derivation of which can be found in the [Appendix](#).

4 Boundary Conditions

We have three boundary conditions [30] at the tissue-bath interface, where $r = a$, through which we will determine the unknown coefficients, $a_{\mu v}$, $b_{\mu v}$, and $c_{\mu v}$. They are continuity of external and extracellular potentials,

$$\phi_e(a, \theta, \varphi) = \phi_o(a, \theta, \varphi), \quad (20)$$

continuity of normal current between bath and interstitium,

$$\rho_e^{-1} \frac{\partial \phi_e(r, \theta, \varphi)}{\partial r} \Big|_{r=a} = \rho_o^{-1} \frac{\partial \phi_o(r, \theta, \varphi)}{\partial r} \Big|_{r=a}, \quad (21)$$

and no intracellular normal current

$$\rho_i^{-1} \frac{\partial \phi_i(r, \theta, \varphi)}{\partial r} \Big|_{r=a} = 0, \quad (22)$$

whose solutions yield

$$a_{\mu\nu} = I_o(-1)^v \mu a^{\mu+1} (r_+ r_-)^{-\mu-1} \rho_e \rho_o (\rho_i + \rho_o) p (2\mu + 1)^{-1} q^{-1}, \quad (23a)$$

$$b_{\mu\nu} = I_o(-1)^{v+1} (r_+ r_-)^{-\mu-1} \rho_e \rho_i \rho_o (2\mu + 1)^{-1} q^{-1} \\ \times p \left(\lambda \mu i_\mu \left(\frac{a}{\lambda} \right) + a i_{\mu+1} \left(\frac{a}{\lambda} \right) \right), \quad (23b)$$

$$c_{\mu\nu} = I_o(-1)^v \mu a^{2\mu+1} (r_+ r_-)^{-\mu-1} \rho_e (2\mu + 1)^{-1} q^{-1} \\ \times \left(r_-^{\mu+1} \rho_0 \left(a \rho_i i_{\mu+1} \left(\frac{a}{\lambda} \right) + \lambda \mu (\rho_i + \rho_o) i_\mu \left(\frac{a}{\lambda} \right) \right) \right. \\ \times (Y_\mu^{-v}(\theta_+, \varphi_+) - Y_\mu^{-v}(\theta_-, \varphi_-)) \\ \left. - \rho_e (\rho_i + \rho_o) \left(\lambda \mu i_\mu \left(\frac{a}{\lambda} \right) + a i_{\mu+1} \left(\frac{a}{\lambda} \right) \right) \right. \\ \left. \times (r_-^{\mu+1} Y_\mu^{-v}(\theta_+, \varphi_+) - r_+^{\mu+1} Y_\mu^{-v}(\theta_-, \varphi_-)) \right), \quad (23c)$$

where

$$p = ((\mu + 1) r_+^{\mu+1} + \mu r_-^{\mu+1}) Y_\mu^{-v}(\theta_-, \varphi_-) \\ - (2\mu + 1) r_-^{\mu+1} Y_\mu^{-v}(\theta_+, \varphi_+) \quad (24)$$

and

$$q = \lambda \mu (\rho_i + \rho_o) (\mu \rho_e + (\mu + 1) \rho_o) i_\mu \left(\frac{a}{\lambda} \right) \\ - a i_{\mu+1} \left(\frac{a}{\lambda} \right) (\mu \rho_e (\rho_i + \rho_o) + (\mu + 1) \rho_i \rho_o), \quad (25)$$

completely determining all potential fields.

5 Current Densities

Current density is proportional to the negative gradient of the scalar electric potential, $\mathbf{J} = -\rho^{-1} \nabla \phi$. The gradient of a function f is given as [31]

$$\nabla f = \sum_{i=1}^3 \frac{1}{\sqrt{g_i}} \frac{\partial f}{\partial u_i} \mathbf{a}_i. \quad (26)$$

In spherical coordinates u_i and g_i are the same as in Eq. (12) and the unit vectors are $\mathbf{a}_1 = \mathbf{r}$, $\mathbf{a}_2 = \boldsymbol{\theta}$, and $\mathbf{a}_3 = \boldsymbol{\varphi}$ which gives us

$$\nabla f = \frac{\partial f}{\partial r} \mathbf{r} + \frac{1}{r} \frac{\partial f}{\partial \theta} \boldsymbol{\theta} + \frac{1}{r \sin(\theta)} \frac{\partial f}{\partial \varphi} \boldsymbol{\varphi}. \quad (27)$$

Applying Eq. (27) to Eqs. (4a)-(4b) and (10) and dividing by the resistivities of their respective domains gives us expressions for the current densities throughout our problem. They are

$$\begin{aligned} \mathbf{J}_i(r, \theta, \varphi) = & - \left(\frac{a_{\mu v}}{\rho_o + \rho_i} \left(\mu \frac{\lambda}{r} i_\mu \left(\frac{r}{\lambda} \right) + i_{\mu+1} \left(\frac{r}{\lambda} \right) \right) \right. \\ & \left. + \frac{\mu}{\rho_i} b_{\mu v} r^{\mu-1} \right) Y_\mu^v(\theta, \varphi) \mathbf{r} \\ & - \left(\left(\frac{a_{\mu v}}{\rho_o + \rho_i} \frac{1}{r} i_\mu \left(\frac{r}{\lambda} \right) + \frac{b_{\mu v}}{\rho_i} r^{\mu-1} \right) \right. \\ & \left. \times (v \cot(\theta) Y_\mu^v(\theta, \varphi) + f(\mu, v) e^{-i\varphi} Y_\mu^{v+1}(\theta, \varphi)) \right) \boldsymbol{\theta} \\ & - \csc(\theta) \left(\frac{a_{\mu v}}{\rho_o + \rho_i} \frac{1}{r} i_\mu \left(\frac{r}{\lambda} \right) + \frac{b_{\mu v}}{\rho_i} r^{\mu-1} \right) i_\mu Y_\mu^v(\theta, \varphi) \boldsymbol{\varphi}, \end{aligned} \quad (28)$$

$$\begin{aligned} \mathbf{J}_o(r, \theta, \varphi) = & \left(\frac{a_{\mu v}}{\rho_o + \rho_i} \left(\mu \frac{\lambda}{r} i_\mu \left(\frac{r}{\lambda} \right) + i_{\mu+1} \left(\frac{r}{\lambda} \right) \right) - \frac{\mu}{\rho_o} b_{\mu v} r^{\mu-1} \right) Y_\mu^v(\theta, \varphi) \mathbf{r} \\ & + \left(\left(\frac{a_{\mu v}}{\rho_o + \rho_i} \frac{1}{r} i_\mu \left(\frac{r}{\lambda} \right) - \frac{b_{\mu v}}{\rho_o} r^{\mu-1} \right) \right. \\ & \left. \times (v \cot(\theta) Y_\mu^v(\theta, \varphi) + f(\mu, v) e^{-i\varphi} Y_\mu^{v+1}(\theta, \varphi)) \right) \boldsymbol{\theta} \\ & + \csc(\theta) \left(\frac{a_{\mu v}}{\rho_o + \rho_i} \frac{1}{r} i_\mu \left(\frac{r}{\lambda} \right) - \frac{b_{\mu v}}{\rho_o} r^{\mu-1} \right) i_\mu Y_\mu^v(\theta, \varphi) \boldsymbol{\varphi}, \end{aligned} \quad (29)$$

$$\begin{aligned} \mathbf{J}_e(r, \theta, \varphi) = & \left(\frac{c_{\mu v}}{\rho_e r^{2+\mu}} + \frac{I_0}{2\mu+1} (f_-(r) Y_\mu^{-v}(\theta_-, \varphi_-) \right. \\ & \left. - f_+(r) Y_\mu^{-v}(\theta_+, \varphi_+)) \right) Y_\mu^v(\theta, \varphi) \mathbf{r} \\ & - \left(\frac{c_{\mu v}}{\rho_e r^{2+\mu}} + \frac{s}{r} \right) (v \cot(\theta) Y_\mu^v(\theta, \varphi) + \tau e^{-i\varphi} Y_\mu^{v+1}(\theta, \varphi)) \boldsymbol{\theta} \\ & - \left(\frac{c_{\mu v}}{\rho_e r^{2+\mu}} + \frac{s}{r} \right) i v \csc(\theta) Y_\mu^v(\theta, \varphi) \boldsymbol{\varphi}, \end{aligned} \quad (30)$$

where

$$f_{+,-}(r) = \begin{cases} \mu \frac{r^{\mu-1}}{r_{+,-}^{\mu+1}}, & \text{if } r < r_{+,-}, \\ -(\mu+1) \frac{r_{+,-}^\mu}{r^{\mu+2}}, & \text{if } r > r_{+,-}, \end{cases} \quad (31)$$

$$s = \frac{I_0}{2\mu+1} \left(\frac{(g_+^<)^{\mu}}{(g_+^>)^{\mu+1}} Y_\mu^{-v}(\theta_+, \varphi_+) - \frac{(g_-^<)^{\mu}}{(g_-^>)^{\mu+1}} Y_\mu^{-v}(\theta_-, \varphi_-) \right), \quad (32)$$

and

$$\tau = \frac{\sqrt{\Gamma(\mu - \nu + 1)}\sqrt{\Gamma(\mu + \nu + 2)}}{\sqrt{\Gamma(\mu - \nu)}\sqrt{\Gamma(\mu + \nu + 1)}}. \quad (33)$$

Here $g_{+,-}^< = \min(r, r_{+,-})$, $g_{+,-}^> = \max(r, r_{+,-})$, and Γ is the gamma function [32].

6 Magnetic Flux Density

Here we summarize the theory behind our numeric calculation of the magnetic flux density, \mathbf{B} , due to \mathbf{J} . Within a current-carrying volume, \mathbf{B} may be calculated from the Biot–Savart law [33],

$$\mathbf{B}(\mathbf{r}) = \frac{\mu_0}{4\pi} \int_V \frac{\mathbf{J}(\mathbf{r}') \times |\mathbf{r} - \mathbf{r}'|}{|\mathbf{r} - \mathbf{r}'|^3} dV', \quad (34)$$

thus every point in \mathbf{B} requires integration over the entire current-carrying volume. Since the numerator of the integrand of Eq. (34) is a cross product the individual components of \mathbf{B} in cartesian coordinates are given as

$$B_x = \frac{\mu_0}{4\pi} \int_V \frac{J_y(z - z') - J_z(y - y')}{((x - x')^2 + (y - y')^2 + (z - z')^2)^{\frac{3}{2}}} dx' dy' dz', \quad (35a)$$

$$B_y = \frac{\mu_0}{4\pi} \int_V \frac{J_z(x - x') - J_x(z - z')}{((x - x')^2 + (y - y')^2 + (z - z')^2)^{\frac{3}{2}}} dx' dy' dz', \quad (35b)$$

$$B_z = \frac{\mu_0}{4\pi} \int_V \frac{J_x(y - y') - J_y(x - x')}{((x - x')^2 + (y - y')^2 + (z - z')^2)^{\frac{3}{2}}} dx' dy' dz'. \quad (35c)$$

In an MREIT scan we are only concerned with the component of the magnetic field that is along the axis of the bore of the MRI scanner, i.e. B_z ; so, we will focus on that now but the following would apply to B_x and B_y as well. We can see that B_z is the difference of two integrals,

$$\begin{aligned} B_z &= \frac{\mu_0}{4\pi} \int_V \frac{J_x(y - y')}{((x - x')^2 + (y - y')^2 + (z - z')^2)^{\frac{3}{2}}} dx' dy' dz' \\ &\quad - \frac{\mu_0}{4\pi} \int_V \frac{J_y(x - x')}{((x - x')^2 + (y - y')^2 + (z - z')^2)^{\frac{3}{2}}} dx' dy' dz'. \end{aligned} \quad (36)$$

If we define the x and y components of a function \mathbf{G} as

$$G_x = \frac{x}{(x^2 + y^2 + z^2)^{\frac{3}{2}}}, \quad (37a)$$

$$G_y = \frac{y}{(x^2 + y^2 + z^2)^{\frac{3}{2}}}, \quad (37b)$$

Table 1 Modeling inputs

Parameter	Value
Bath resistivity, ρ_e	0.29 Ωm
Intracellular resistivity, ρ_i	0.19 Ωm
Membrane resistance times unit area, R_m	0.15 Ωm^2
Ratio of surface area to volume, β	20,000 m^{-1}
Source and sink magnitude, I_0	1 mA
Tissue radius, a	2 mm
Point source position, \mathbf{p}_+	$(5, \frac{\pi}{2}, 0)$
Point sink position, \mathbf{p}_-	$(5, \pi, 0)$
Summation upper bound, μ	10

then we can define B_z as a difference of two convolutions [34],

$$B_z = \frac{\mu_0}{4\pi} (J_x * G_y) - \frac{\mu_0}{4\pi} (J_y * G_x). \quad (38)$$

Convolution becomes multiplication in the Fourier domain [34] thus B_z finally is calculated as

$$B_z = \frac{\mu_0}{4\pi} \mathcal{F}^{-1} \{ \mathcal{F}\{J_x G_y\} - \mathcal{F}\{J_y G_x\} \}, \quad (39)$$

where \mathcal{F} is the Fourier transform [34].

7 Numeric Examples and Discussion

We now demonstrate our modeling with some simple examples in which we show the effect of varying ρ_o . Let us assume the tissue radius is $a = 2$ mm, the point current source is at $\mathbf{p}_+ = (5, \frac{\pi}{2}, 0)$, and the point current sink is at $\mathbf{p}_- = (5, \pi, 0)$. Plainly said, there is a cathode 2 mm to the right of, and an anode 2 mm directly below, a ball of tissue in an otherwise uniform ocean of artificial sea water. We choose resistivities in a range known to be biologically realistic [10], specifically $\rho_e = 0.29 \Omega\text{m}$, $\rho_i = 0.19 \Omega\text{m}$, and $\rho_m = 0.15 \Omega\text{m}$. The source and sink are positive and negative, respectively, with equal magnitude $I_0 = 1$ mA. The upper bound was chosen that the solution stabilized to 5 decimal places, i.e. $\mu = 10$. All of these inputs are summarized in Table 1. In our first three examples we hold $\rho_o = \rho_e$, $\rho_o = 10\rho_e$, $\rho_o = 0.1\rho_e$, shown in Figs. 2, 3, and 4, respectively. The figures are squares of 3 mm so as not to include the source and sink which would obscure the behavior in and immediately surrounding the sphere. In the top graph of each figure is plotted ϕ_o and ϕ_e where they appear in the xy plane that includes the origin. The solid black lines are the equipotentials with the shade of color between them corresponding to the magnitude. The middle graphs show the current densities: \mathbf{J}_e outside the sphere and $\mathbf{J}_i + \mathbf{J}_o$ inside the sphere. The arrows give the direction of the current while the color corresponds to the magnitude $|\mathbf{J}| = \sqrt{J_x^2 + J_y^2 + J_z^2}$. It should be noted that there is a symmetry about

Fig. 2 The top, middle, and bottom images are plots of the electric potential, current density, and magnetic flux density, respectively, in the plane $z = 0$. The dashed white line indicates the circumference of the sphere. In the cartesian coordinates on this graph the current point source is at $(5, 0)$ and the current point sink is at $(0, -5)$. The ratio $\rho_e/\rho_o = 1$. In the top graph we show extracellular potential of the sphere of tissue amid the external potential in the conducting bath. There the black lines are equipotentials and the shade of color corresponds to the magnitude. In the middle graph we show the external current density in the bath and the sum of the intracellular and extracellular current densities in the sphere. The magnetic flux density shown in the bottom graph was calculated from the current density field

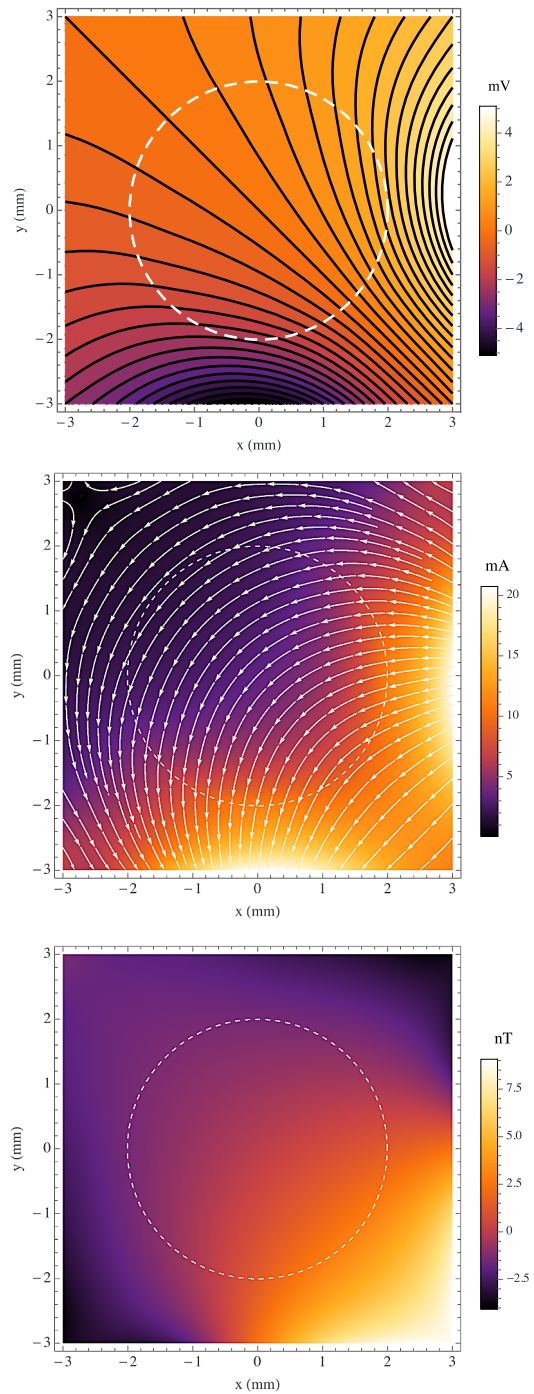


Fig. 3 The top, middle, and bottom images are plots of the electric potential, current density, and magnetic flux density, respectively, in the plane $z = 0$. The dashed white line indicates the circumference of the sphere. In the cartesian coordinates on this graph the current point source is at $(5, 0)$ and the current point sink is at $(0, -5)$. The ratio $\rho_e/\rho_o = 0.1$. In the top graph we show extracellular potential of the sphere of tissue amid the external potential in the conducting bath. There the black lines are equipotentials and the shade of color corresponds to the magnitude. In the middle graph we show the external current density in the bath and the sum of the intracellular and extracellular current densities in the sphere. The magnetic flux density shown in the bottom graph was calculated from the current density field

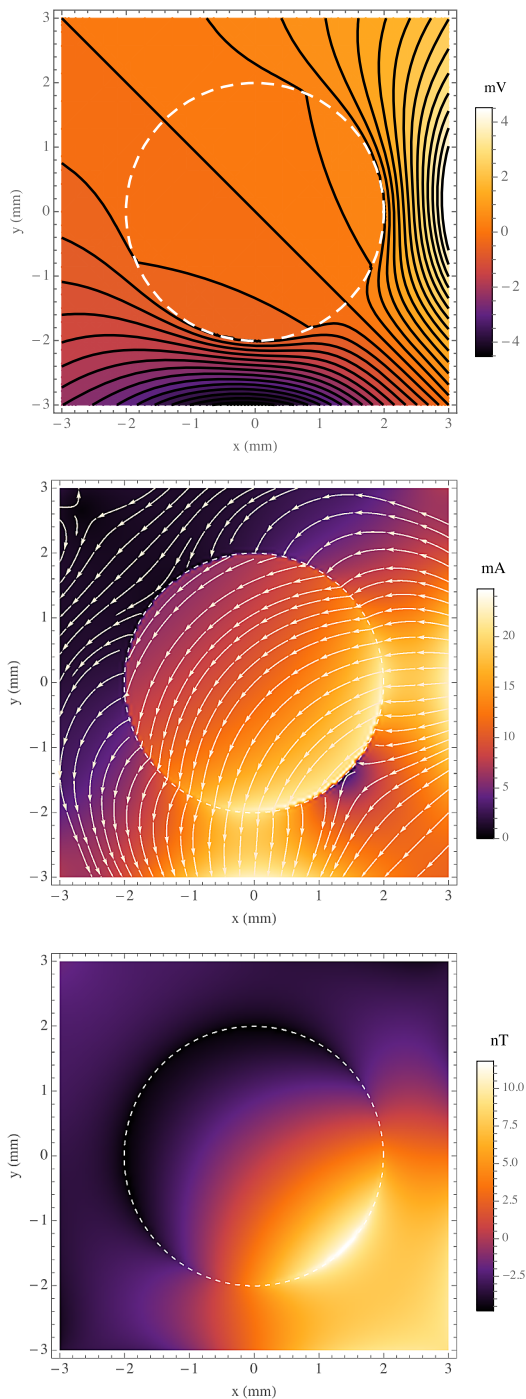
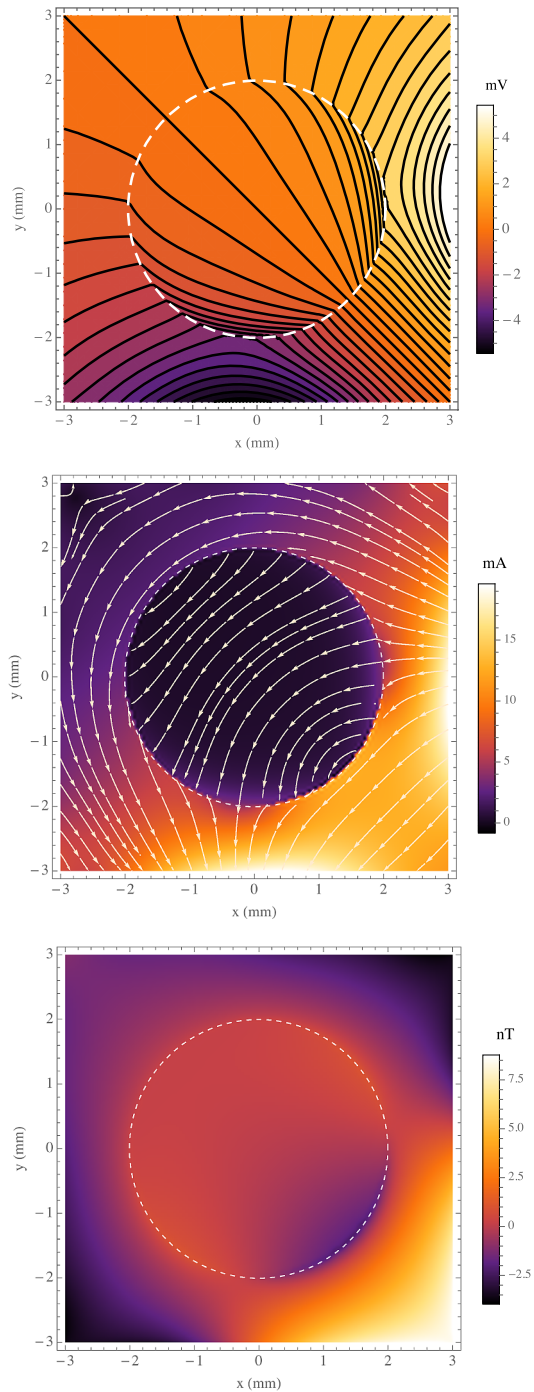


Fig. 4 The top, middle, and bottom images are plots of the electric potential, current density, and magnetic flux density, respectively, in the plane $z = 0$. The dashed white line indicates the circumference of the sphere. In the cartesian coordinates on this graph the current point source is at $(5, 0)$ and the current point sink is at $(0, -5)$. The ratio $\rho_e/\rho_o = 10$. In the top graph we show the extracellular potential of the sphere of tissue amid the external potential in the conducting bath. There the black lines are equipotentials and the shade of color corresponds to the magnitude. In the middle graph we show the external current density in the bath and the sum of the intracellular and extracellular current densities in the sphere. The magnetic flux density shown in the bottom graph was calculated from the current density field



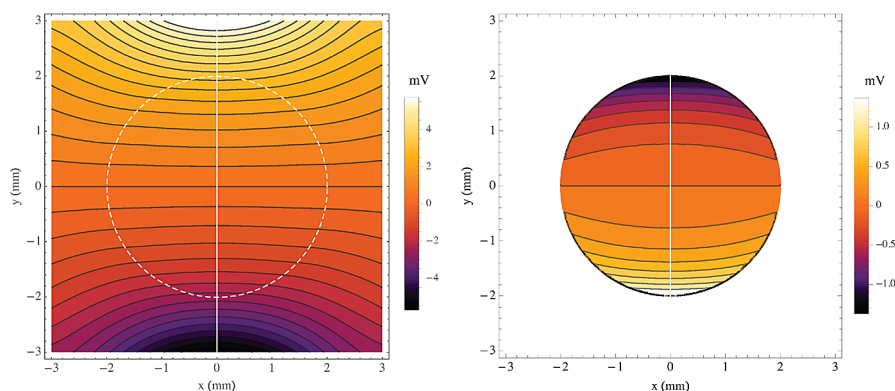


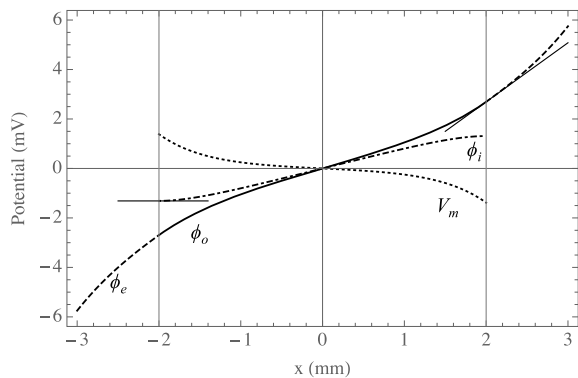
Fig. 5 On the left is a contour plot of the extracellular potential of the sphere of tissue amid the external potential in the conducting bath. The dashed white line indicates the circumference of the sphere. On the right is a contour plot of the transmembrane potential within the sphere. In both graphs, the black lines are equipotentials and the shade of color corresponds to the magnitude. In the cartesian coordinates on these graphs the current point source is at (0, 5) and the current point sink is at (0, -5). The ratio $\rho_e/\rho_o = 1$

the plane depicted since it contains the source and sink points and the orthodrome of the sphere of tissue, thus all the current is in the plane of the page, i.e. $J_z = 0$. In the bottom graphs we show the magnetic flux density to which \mathbf{J}_e , \mathbf{J}_i , and \mathbf{J}_o give rise. We composed a program in MATLAB (The MathWorks, Inc., Natick, MA) that employs the fast Fourier and inverse Fourier transforms to compute B_z from the simulated \mathbf{J} data throughout a $3 \text{ mm} \times 3 \text{ mm} \times 3 \text{ mm}$ cube whose origin is the same as the sphere's. The \mathbf{J} sampling was 13 slices, evenly spaced along the z axis, each containing 128×128 data points. All of these results are as expected. But for the dashed white line, the sphere of tissue is indistinguishable from the surrounding bath in Fig. 2. When the interstitium has one tenth the bath's resistivity (Fig. 3) the current can be seen to go toward the sphere resulting in a large B_z at the sphere's edge in the fourth quadrant of the field of view. Accordingly, when the interstitium is ten times as resistive as the bath (Fig. 4), the current flows mostly around it. In terms of the B_z field, there appears a faint glow around the sphere's edge, surrounding a region of relative darkness, due to this flow pattern. In both cases of $\rho_o \neq \rho_e$ the tissue is clearly visible in all three field types, ϕ , \mathbf{J} , and B_z .

As a limiting example, let us move the source point to be directly above the tissue such that $\mathbf{p}_+ = (5, 0, 0)$. This is an axially symmetric problem, identical to our earlier work [35], and we get the same results, shown in Figs. 5 and 6. The white line in Fig. 5 is the horizontal axis in the plot in Fig. 6 where we have plotted ϕ_o , ϕ_i , V_m , and ϕ_e as a function of distance, along the segment joining the sink and source. The vertical lines at $y = -2$ and 2 indicate the extent of the tissue where it is clear by inspection that all the boundary conditions are satisfied. At the tissue radius ϕ_o (solid line) and ϕ_e (dashed line) are equal as are their slopes, and the slope of ϕ_i (dot-dashed line) is zero. Furthermore, we can see that V_m (dotted line) is the difference between ϕ_i and ϕ_o , fulfilling Eq. (3a).

In this article we set out to model the electromagnetic fields in and around a volume of neural tissue stimulated by current that is injected in close proximity to it.

Fig. 6 The intracellular (dot-dashed), extracellular (solid), transmembrane (dotted), and bath (dashed) potentials are shown as a function of y , along the white line where $x = 0$ in Fig. 5. The vertical lines at $y = -2$ and 2 correspond to the radius of the sphere, $r = a$, where are also plotted the lines tangent to the curves of the potentials in the boundary conditions



The geometry selected is expected in an *in vitro* MREIT scan, where an AG may be submerged in a bath of artificial seawater contained in a cylindrical sample chamber that has injection current ports on opposing sides [7]. We note that the effect of the applied external field is to simultaneously depolarize and hyperpolarize portions of the simulated tissue nearby the current sources. If a portion of tissue is sufficiently depolarized to form an action potential it may propagate throughout the tissue from these regions. It has been suggested [36] that modest depolarizations or hyperpolarizations caused by weak external currents applied to the skull are sufficient to excite or inhibit neural excitability in brain structures. More complex models of the tissue and field geometry used here may prove useful methods of exploring the mechanisms of such neuromodulation techniques. In these numeric examples we have held the source and sink points to be equidistant from the sphere of tissue, $r_+ = r_-$. This gives the problem a symmetry about the lines $y = -x$ in Figs. 2, 3, and 4 and $y = 0$ in Fig. 5. However, the AG is smaller than the diameter of the sample chamber; so, it will not necessarily be directly between the ports, spoiling this axial symmetry. Thus a complete three dimensional treatment of this type of problem is finally required.

From Eqs. (4a)-(4b) we can see that each region, intracellular and extracellular, has a monodomain component ψ that obeys the Laplace equation. Plots of this potential produce results similar to those of Rush and Driscoll [37, 38]. They solved for the electric potential in a brain from electrodes placed directly on a scalp, modeling the brain, skull, and scalp as different layers of monodomain tissues, i.e. a sphere encased in a thin shell of bone which was itself encased in a thin shell of skin. We could amend our model to include similar surrounding layers, each with its own expressions for ϕ and \mathbf{J} and coefficients determined from the boundary conditions. The boundary conditions themselves would change, e.g. the interstitium would have continuity of potential and normal current with the skull rather than with artificial sea water. Such changes would be appropriate for a model on the scale of e.g. a dog's head [39].

We have modeled both domains as being ohmic, i.e. their impedivities $z = \rho$ are only real valued, but z can be made complex by introducing a frequency dependence [34]. In their extensive literature review [40] and experimental measurements [41], Gabriel et al. show that most tissues have frequency dependent electrical properties. More recently, Bédard et al. [42] and Bazhenov et al. [43] explored frequency dependence in local field potentials. In a series of theoretical papers Bédard and Destexhe

provide a general framework for modeling electromagnetic fields in brain tissue without assuming the interstitium to be purely resistive. Absent those assumptions, they developed a generalized formalism of current source density analysis with the goal of relating the extracellular potential to current sources in the tissue [44], considering monopolar sources, dipolar sources, and combinations thereof. Next they incorporated frequency dependent extracellular and intracellular impedivities, z_o and z_i , to generalize the cable theory [11] for neurons embedded in a complex interstitium [45]. They showed that z_o and z_i have a non-trivial impact on the properties of neurons, e.g. voltage attenuation with distance and the spectral profile of V_m . Finally, they calculated the magnetic fields generated from a current-carrying neuron and, using superposition, a population of neurons [46]. They showed that since the electrical properties of neural tissue impact the transmembrane and axial currents of a neuron, they will necessarily also impact the magnetic fields these currents create. By contrast, in our study we have concerned ourselves with the interaction of neural tissue and an aphysiologic stimulus. The effects of this stimulus will naturally also depend upon complex tissue properties, but over a larger scale determined by the stimulus geometry. Future work should explore the impact non-ohmic impedivities have on a tissue interactions with applied external fields.

Let us now consider possible next steps to build on this first study. As well as modeling tissue properties as complex, it should also be possible to examine the transient behavior of excitable tissue using a Hodgkin–Huxley-like model [47]. These analytical models of spheres could then be validated and used to estimate the scale of changes expected in MREIT images due to different neural activity patterns.

Competing Interests

The authors declare that they have no competing interests.

Authors' Contributions

BLS: Conceived the study, conceived, and executed calculations, wrote the paper. MC: Conceived the study, conceived and executed calculations. RJS: Conceived the study, wrote the paper. All authors read and approved the final manuscript.

Funding

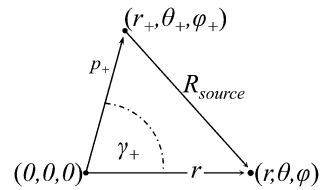
This work was supported by a grant from the NIH (No. R01NS077004) to RJS.

Appendix

The potential due to the current point source, shown in Fig. 7, goes as the inverse of the distance from it which is given as

$$R_{\text{source}} = |\mathbf{r} - \mathbf{p}_+| = \sqrt{r^2 + r_+^2 - 2rr_+ \cos(\gamma_+)}, \quad (40)$$

Fig. 7 Geometry of the point current source at $\mathbf{p}_+ = (r_+, \theta_+, \varphi_+)$ in relation to the origin $(0, 0, 0)$ and a field point $\mathbf{r} = (r, \theta, \varphi)$, with R_{source} being the distance between \mathbf{r} and \mathbf{p}_+



and whose inverse has the form of the generating function of the Legendre polynomial [32], allowing us to write

$$\frac{1}{\sqrt{r^2 + r_+^2 - 2rr_+ \cos(\gamma_+)}} = \sum_{\mu=0}^{\infty} \frac{(g_+^<)^{\mu}}{(g_+^>)^{\mu+1}} P_{\mu}(\cos(\gamma_+)), \quad (41)$$

where P_{μ} is the Legendre polynomial of order μ . The spherical law of cosines [29] lets us write γ in terms of θ and φ ,

$$\cos(\gamma_+) = \cos(\theta) \cos(\theta_+) + \sin(\theta) \sin(\theta_+) \cos(\varphi - \varphi_+), \quad (42)$$

which, from spherical harmonic addition theorem [48], allows us to expand P_{μ} in terms of Y_{μ}^v ,

$$P_{\mu}(\cos(\gamma_+)) = \frac{4\pi}{2\mu+1} \sum_{v=-\mu}^{\mu} Y_{\mu}^v(\theta, \varphi) Y_{\mu}^{-v}(\theta_+, \varphi_+). \quad (43)$$

The analysis for a current point *sink* proceeds analogously. From Eqs. (19a)-(19b), the potentials for current points source and sink finally are given in spherical coordinates as

$$\phi_{\text{source}}(r, \theta, \varphi) = I_0 \rho_e \sum_{\mu=0}^{\infty} \sum_{v=-\mu}^{\mu} \frac{(g_+^<)^{\mu}}{(g_+^>)^{\mu+1}} \frac{1}{2\mu+1} Y_{\mu}^v(\theta, \varphi) Y_{\mu}^{-v}(\theta_+, \varphi_+), \quad (44a)$$

$$\phi_{\text{sink}}(r, \theta, \varphi) = -I_0 \rho_e \sum_{\mu=0}^{\infty} \sum_{v=-\mu}^{\mu} \frac{(g_-^<)^{\mu}}{(g_-^>)^{\mu+1}} \frac{1}{2\mu+1} Y_{\mu}^v(\theta, \varphi) Y_{\mu}^{-v}(\theta_-, \varphi_-). \quad (44b)$$

References

1. Seo JK, Woo EJ. Magnetic resonance electrical impedance tomography (MREIT). SIAM Rev. 2011;53:40–68.
2. Zhang X, Liu J, He B. Magnetic-resonance-based electrical properties tomography: a review. IEEE Rev Biomed Eng. 2014;7:87–96.
3. Moon P, Spencer DE. Foundations of electrodynamics. Princeton: Van Nostrand; 1960.
4. Seo JK, Woo EJ. Electrical tissue property imaging at low frequency using MREIT. IEEE Trans Biomed Eng. 2014;61:1390–9.
5. Seo JK, Woo EJ, Katscher U, Wang Y. Electro-magnetic tissue properties MRI. London: Imperial College Press; 2014.

6. Oh TI, Jeong WC, McEwan A, Park HM, Kim HJ, Kwon OI, Woo EJ. Feasibility of magnetic resonance electrical impedance tomography (MREIT) conductivity imaging to evaluate brain abscess lesion: *in vivo* canine model. *J Magn Reson Imaging*. 2013;38:189–97.
7. Sadleir RJ, Grant SC, Woo EJ. Can high-field MREIT be used to directly detect neural activity? Theoretical considerations. *NeuroImage*. 2010;52:205–16.
8. FitzHugh R. Mathematical models of excitation and propagation in nerve. In: Schwan HP, editor. *Biological engineering*. New York: McGraw-Hill; 1969. p. 1–85.
9. Sobie EA, Susil RC, Tung L. A generalized activating function for predicting virtual electrodes in cardiac tissue. *Biophys J*. 1997;73:1410–23.
10. Malmivuo J, Plonsey R. *Bioelectromagnetism: principles and applications of bioelectric and biomagnetic fields*. New York: Oxford University Press; 1995.
11. Rall W, Agmon-Snir H. Cable theory for dendritic neurons. 2nd ed. In: Koch C, Segev I, editors. *Methods in neuronal modeling: from ions to networks*. Cambridge: MIT Press; 1988. p. 27–92.
12. Plonsey R. The use of a bidomain model for the study of excitable media. *Lect Math Life Sci*. 1989;21:123–49.
13. Altman KW, Plonsey R. Development of a model for point source electrical fibre bundle stimulation. *Med Biol Eng Comput*. 1988;26:466–75.
14. Altman KW, Plonsey R. Point source nerve bundle stimulation: effects of fiber diameter and depth on simulated excitation. *IEEE Trans Biomed Eng*. 1990;37:688–98.
15. Henriquez CS, Trayanova N, Plonsey R. Potential and current distributions in a cylindrical bundle of cardiac tissue. *Biophys J*. 1988;53:907–18.
16. Henriquez CS, Plonsey R. Simulation of propagation along a cylindrical bundle of cardiac tissue—I: mathematical formulation. *IEEE Trans Biomed Eng*. 1990;37:850–60.
17. Henriquez CS, Plonsey R. Simulation of propagation along a cylindrical bundle of cardiac tissue—II: results of simulation. *IEEE Trans Biomed Eng*. 1990;37:861–75.
18. Trayanova N, Henriquez CS, Plonsey R. Limitations of approximate solutions for computing the extracellular potential of single fibers and bundle equivalents. *IEEE Trans Biomed Eng*. 1990;37:22–35.
19. Plonsey R, Barr RC. Current flow patterns in two-dimensional anisotropic bisyncytia with normal and extreme conductivities. *Biophys J*. 1984;45:557–71.
20. Barr RC, Plonsey R. Propagation of excitation in idealized anisotropic two-dimensional tissue. *Biophys J*. 1984;45:1191–202.
21. Roth BJ. Approximate analytical solutions to the bidomain equations with unequal anisotropy ratios. *Phys Rev E*. 1997;55:1819–26.
22. Trayanova N, Roth BJ, Malden LJ. The response of a spherical heart to a uniform electric field: a bidomain analysis of cardiac stimulation. *IEEE Trans Biomed Eng*. 1993;40:899–908.
23. Bodmer R, Verselis V, Levitan IB, Sprat DC. Electronic synapses between *Aplysia* neurons *in situ* and in culture: aspects of regulations and measurements of permeability. *J Neurosci*. 1988;8:1656–970.
24. Moon PH, Spencer DE. *Field theory handbook: including coordinate systems, differential equations, and their solutions*. Berlin: Springer; 1981.
25. Plonsey R, Heppner DB. Considerations of quasistationarity in electrophysiological systems. *Bull Math Biophys*. 1967;29:657–64.
26. Tung L. A bi-domain model for describing ischemic myocardial D-C potentials. Ph.D. dissertation. Cambridge, MA, USA: Massachusetts Institute of Technology; 1978.
27. Plonsey R. The nature of sources of bioelectric and biomagnetic fields. *Biophys J*. 1982;39:309–12.
28. Ben-Menahem B, Singh SH. *Seismic waves and sources*. New York: Springer; 1981.
29. Frannklin P. Basic mathematical formulas. In: Menzel DH, editor. *Fundamental formulas in physics*. New York: Dover; 1960. p. 1–106.
30. Roth BJ. A comparison of two boundary conditions used with the bidomain model of cardiac tissue. *Ann Biomed Eng*. 1991;19:669–77.
31. Moon PH, Spencer DE. *Vectors*. Princeton: Van Nostrand; 1965.
32. Bell WW. *Special functions for scientists and engineer*. Mineola: Dover; 2004.
33. Smythe WR. *Static and dynamic electricity*. New York: McGraw-Hill; 1939.
34. Sneddon IN. *Fourier transforms*. Mineola: Dover; 1995.
35. Schwartz BL, Sadleir RJ. Analysis of bipolar external excitation of spherical tissue by spatially opposed current source and sink points. In: *Conf proc IEEE eng med biol soc*, 37th, Milan. 2015. p. 2299–302.
36. Nitsche MA, Paulus W. Excitability changes induced in the human motor cortex by weak transcranial direct current stimulation. *J Physiol*. 2000;527:633–9.

37. Rush S, Driscoll DA. Current distribution in the brain from surface electrodes. *Anesth Analg*. 1968;47:717–23.
38. Rush S, Driscoll DA. EEG electrode sensitivity—an application of reciprocity. *IEEE Trans Biomed Eng*. 1969;16:15–22.
39. Kim YT, Lee BI, Woo EJ, Kim HJ. *In vivo* MREIT experiment of canine brain. In: Intl conf electr bioimp, 13th, Graz. 2007. p. 512–5.
40. Gabriel C, Gabriel S, Corthout E. The dielectric properties of biological tissues: I. Literature survey. *Phys Med Biol*. 1996;41:2231–49.
41. Gabriel S, Lau RW, Gabriel C. The dielectric properties of biological tissues: II. Measurements in the frequency range 10 Hz to 20 GHz. *Phys Med Biol*. 1996;41:2251–69.
42. Bédard C, Kröger H, Destexhe A. Does the $1/f$ frequency scaling of brain signals reflect self-organized critical states? *Phys Rev Lett*. 2006;97:118102.
43. Bazhenov M, Lonjers P, Skorheim S, Bédard C, Destexhe A. Non-homogeneous extracellular resistivity affects the current-source density profiles of up–down state oscillations. *Philos Trans R Soc A, Math Phys Eng Sci*. 2011;369:3802–19.
44. Bédard C, Destexhe A. Generalized theory for current-source density analysis in brain tissue. *Phys Rev E*. 2011;84:041909.
45. Bédard C, Destexhe A. Generalized cable theory for neurons in complex and heterogeneous media. *Phys Rev E*. 2013;88:022709.
46. Bédard C, Destexhe A. Generalized cable formalism to calculate the magnetic field of single neurons and neuronal populations. *Phys Rev E*. 2014;90:042723.
47. Hodgkin AL, Huxley AF. A quantitative description of membrane current and its application to conduction and excitation in nerve. *J Physiol*. 1952;117:500–44.
48. Arfken G. *Mathematical methods for physicists*. Orlando: Academic Press; 1985.