

Research Article

Open Access

Syed Mustafizur Rahman*, Syed Mahbubur Rahman, Md. Shuzon Ali, Md. Abdullah Al Mamun, and Md. Nezam Uddin

Estimation of seasonal boundaries using temperature data: a case of northwest part of Bangladesh

<https://doi.org/10.1515/mcwf-2020-0102>

Received July 8, 2020; accepted December 6, 2020

Abstract: Seasons are the divisions of the year into months or days according to the changes in weather, ecology and the intensity of sunlight in a given region. The temperature cycle plays a major role in defining the meteorological seasons of the year. This study aims at investigating seasonal boundaries applying harmonic analysis in daily temperature for the duration of 30 years, recorded at six stations from 1988 to 2017, in northwest part of Bangladesh. Year by year harmonic analyses of daily temperature data in each station have been carried out to observe temporal and spatial variations in seasonal lengths. Periodic nature of daily temperature has been investigated employing spectral analysis, and it has been found that the estimated periodicities have higher power densities of the frequencies at 0.0027 and 0.0053 cycles/day. Some other minor periodic natures have also been observed in the analyses. Using the frequencies between 0.0027 to 0.0278 cycles/day, the observed periodicities in spectral analysis, harmonic analyses of minimum and maximum temperatures have found four seasonal boundaries every year in each of the stations. The estimated seasonal boundaries for the region fall between 19-25 February, 19-23 May, 18-20 August and 17-22 November. Since seasonal variability results in imbalance in water, moisture and heat, it has the potential to significantly affect agricultural production. Hence, the seasons and seasonal lengths presented in this research may help the concerned authorities take measures to reduce the risks for crop productivity to face the challenges arise from changing climate. Moreover, the results obtained are likely to contribute in introducing local climate calendar.

Keywords: Climate; Season; Harmonic analysis; Spectral analysis; Temperature

1 Introduction

Bangladesh experiences diverse threats including floods, cyclones, hurricanes, waves, sea level rise, and landslides invariably in various locations, and accordingly, has been underlined as one of the most vulnerable countries in the world towards climate change [30, 31, 64]. The northwest part, focus of this research, experiences extreme weather, recurrent drought and irregular precipitation [2, 5, 23], which is also in line with the evidenced affirmation made by the Intergovernmental Panel on Climate Change (IPCC) about global

***Corresponding Author: Syed Mustafizur Rahman:** Geophysics Laboratory, Department of Electrical and Electronic Engineering, University of Rajshahi, Rajshahi 6205, Bangladesh Email: smrahman@ru.ac.bd

Syed Mahbubur Rahman: American International University-Bangladesh (AIUB), Kuratoli, Dhaka 1229, Bangladesh; International Institute for Ecological Negotiation (INNÉ), Grasse 06130, France

Md. Shuzon Ali: Department of Mathematics, Bangabandhu Sheikh Mujibur Rahman Science and Technology University, Gopalganj 8100, Bangladesh

Md. Abdullah Al Mamun: Department of Mathematics, Bangladesh Army University of Engineering and Technology, Natore 6431, Bangladesh

Md. Nezam Uddin: Institute of Environmental Science, University of Rajshahi, Rajshahi 6205, Bangladesh

warming and climate change [21, 22]. Since extreme dry and drought weather regulates agricultural production, which plays pivotal role in food security and national economy, impact of temperature on weather is much required investigation to explore local climate [1, 60]. Climate of the northwest part of Bangladesh and the neighboring regions have undergone for various investigations using temperature and rainfall analyses [3, 29, 38, 40, 44, 46, 51, 52, 65]. However, seasons in this region in terms of boundary and duration in a year, and the respective variations are underexplored as of yet. This research thus is intended to assess and comprehend the seasons and seasonal variability in temperatures.

Bangladesh is located in the tropical monsoon region and characterized by high temperature, heavy rainfall, often excessive humidity, and fairly marked seasonal variations. While about 68% of the total land areas are used for agriculture and village settlement, approximately 80% of the total populations are directly or indirectly involved in agriculture and related activities [52], although a constant decrease in agricultural employment is evidenced during last 30 years [64]. Agricultural yield in Bangladesh largely depends on climate variability [45]. Along with other environmental and climate parameters, temperature and rainfall are the major visible climate variables that play pivotal roles in agriculture [17, 61, 62], and hence, require detail investigation in order to assess climatic pattern of the region.

Bangladesh is known as the land of six seasons [8, 24], in contrast to the usual four-season concept, having a temperate climate. Within these six seasons, there are three distinct spells: the pre-monsoon hot season from March to May, the rainy monsoon season from June to October, and a cool dry winter season from November to February (Table 1). There are different views and multiple ways in separating and characterizing the seasons over the calendar year in Bangladesh. Table 1 shows six, three, four and two different seasons and timeframes of the seasons over a calendar year. Seasonal trend analysis is considered as one of the most vital analyses in climate change research [41, 55]. Although trend analysis along with estimation of climate variables is frequently found in the literatures studying the climate of Bangladesh, seasons in Bangladesh are yet to be well-defined both in terms of duration and boundary. Therefore, this research intends to investigate the seasons through identifying the beginning, ending and duration of a particular spell within a calendar year. Although perception and practices of farmers, various adaptation measures, impacts of climate change on agricultural yield are among the top researched areas (For instance, [12, 19, 25]), empirical evidences about the changes in season and respective duration in local scale require more investigations to provide the agriculture department of any government with loads of information about how the seasons are being shifted.

Estimation of annual seasonal cycle varies over land and ocean due to anthropogenic forcing along with the time derived from equinoxes [15, 49, 58]. Time series records of climate variables available in meteorological stations are of different types. However, the seasons in different time series in a yearly cycle should be unique. It is thus rational to expect the seasons in time series of different climate variables would be similar. Hence, this work estimates the seasonal boundaries using harmonic analysis, which has already been tested in various applications in the field of geoscience [6, 39, 50, 54, 67]. The extension of harmonic analysis has also been implemented in meteorology and climatology; for instance, VanLoon et al. (1973) [59] used harmonic analysis to describe zonal standing waves in the atmosphere-pressure waves that described the ridges and troughs exhibited by the isobars on weather maps. Legates and Willmott (1990b) [34] employed harmonic analysis to explain seasonal trends in global surface air temperature and showed areas that exhibited a strong seasonal cycle in air temperature at the middle and upper latitudes from areas where air temperature had a strong biannual cycle. Successful applications of harmonic analysis have also been observed in describing rainfall pattern [32, 33, 66].

Fourier or harmonic analysis can decompose a time-dependent periodic function into a series of oscillatory components and can rebuild the function using the oscillatory components defined as unique amplitude and phase values [7]. The proportion of variance in the original time series data set accounted for by each term of the harmonics can also be calculated [26]. Justino et al. (2010) [27] have shown the meaningful application of harmonic analysis in seasonal variability, and the authors have estimated the largest seasonal variability over the Weddell and Ross seas along with the amplitude of the seasonal cycle over the West Antarctic ice sheet. In most of the contributions the analysis has been reflected as a viable tool for investigating seasonal cycles of temperature and the fluctuation of annual and daily rainfall [11, 31, 68]. Accordingly, this research implemented harmonic analysis over daily temperature time series in order to show the boundaries and dura-

Table 1: Anomaly in seasons in Bangladesh

Number of Seasons	Seasons in Bangladesh												Sources
	Mar	Apr	May	Jun	Jul	Aug	Sep	Oct	Nov	Dec	Jan	Feb	
6	Spring (<i>Basanta</i>)	Summer (<i>Grisma</i>)		Rain (<i>Barsa</i>)		Autumn (<i>Sharat</i>)		L. Autumn (<i>Hemanta</i>)		Winter (<i>Sheet</i>)			Banglapedia, 2015 [8]
	mid-Feb to mid-Apr	mid-Apr to mid-Jun		mid-Jun to mid-Aug		mid-Aug to mid-Oct		mid-Oct to mid-Dec		mid-Dec to mid-Feb			
3	Pre-monsoon hot season			Rainy monsoon season					Cool dry winter season				Banglapedia, 2015 [8]
	Mar to May			Jun to Oct					Nov to Feb				
4	Pre-monsoon summer		hot	Rainy monsoon				Post-monsoon autumn		Dry winter season			Shahid, 2010a, 2010b [51]
	Mar to May			Jun to Sept				Oct to Nov		Dec to Feb			
4	Pre-monsoon			Monsoon				Post-monsoon		Winter			Khatun et al. 2017 [29]
	Mar to May			Jun to Sept				Oct to Nov		Dec to Feb			
4	Pre-Monsoon			Monsoon				Post-Monsoon		Winter			Syed & Amin, 2016 [53]
	Mar to May			Jun to Aug				Sep to Nov		Dec to Feb			
2	Wet season or Summer cropping season (<i>Kharif</i>)						Dry season or Winter cropping season (<i>Rabi</i>)						Hossain, 2019 [20]
	Apr to Oct (spring, summer and fall)						Nov to Mar						
3	Pre-monsoon season			Monsoon season					Dry winter season				Rakib, 2018 [46]
	Mar to May			Jun to Oct					Nov to Feb				

tion of the season in days within a year, and the corresponding variability of seasons in Rajshahi and Rangpur, the two northern divisions in Bangladesh.

2 Materials and methods

2.1 Study area

The study area is located in the northwestern part of Bangladesh that extends from 23°80' to 26°38' N latitude and from 88°01' to 89°70' E longitude with an area of about 34513 sq. km under Rajshahi and Rangpur divisions (Figure 1). Except for the Barind Tract, most of the region is low-lying plain land. It is surrounded by India in the west and north, Dhaka division in the east and Khulna division in the south. The area of these two divisions is lying at the west of the River Jamuna and north of the River Padma. Locations of six meteorological stations: Rajshahi, Bogura, Ishwardi, Dinajpur, Rangpur, and Syedpur are shown in Figure 1.

2.2 Data

Daily minimum and maximum temperature data recorded at six stations for 30 years from 1988 to 2017 were obtained from Bangladesh Meteorological Department. Obtained data shows a very minimal record of overall missing data, less than 1%, which indicates an acceptable level of data quality. However, the missing data obtained for Ishwardi station were slightly more. Missing records were estimated using the smoothing spline technique [14]. It is to note that daily minimum and maximum surface temperature have been used for analyzing annual cycle of surface temperature [36].



Figure 1: Location map of the study area, northwest part of Bangladesh, including meteorological stations, district headquarters, highways, and major rivers.

2.3 Harmonic analysis

Harmonic analysis decomposes a signal into an infinite series of harmonic components, and comprises initially of a sine wave and a cosine wave of equal frequency. These two waves are then combined into a single cosine wave, which has characteristic amplitude and phase angle. Harmonic analysis lets a complex curve to be expressed as the sum of a Fourier series of cosine waves and an additive term [13, 47]. Successive harmonic terms are added to produce a complex curve, and each component curve or term accounts for a percentage of the total variance in the original time series data set.

A continuous function $f(x)$ in the interval $[0, l]$ according to Fourier series can be written as [26]:

$$f(x) = \frac{a_0}{2} + \sum_{n=1}^{\infty} \left(a_n \cos \frac{2\pi nx}{l} + b_n \sin \frac{2\pi nx}{l} \right) \tag{1}$$

where, the term a_0 , a_n and b_n are Fourier coefficients. The coefficients a_0 , a_n and b_n can be defined as followed.

$$a_0 = \frac{2}{l} \int_0^l f(x) dx \quad (2)$$

$$a_n = \frac{2}{l} \int_0^l f(x) \cos \frac{2\pi nx}{l} dx \quad (3)$$

$$b_n = \frac{2}{l} \int_0^l f(x) \sin \frac{2\pi nx}{l} dx \quad (4)$$

Assuming the i th harmonic to the i th term in the Fourier series for $i \geq 1$, the terms can be written as:

$$a_i \cos \frac{2\pi ix}{l} + b_i \sin \frac{2\pi ix}{l}$$

The i th harmonic can be converted to a single cosine term and represent it as follows:

$$\begin{aligned} & a_i \cos \frac{2\pi ix}{l} + b_i \sin \frac{2\pi ix}{l} \\ &= \sqrt{a_i^2 + b_i^2} \left[\frac{a_i}{\sqrt{a_i^2 + b_i^2}} \cos \frac{2\pi ix}{l} + \frac{b_i}{\sqrt{a_i^2 + b_i^2}} \sin \frac{2\pi ix}{l} \right] \\ &= \sqrt{a_i^2 + b_i^2} \left[\cos \phi_i \cos \frac{2\pi ix}{l} + \sin \phi_i \sin \frac{2\pi ix}{l} \right] \\ &= c_i \cos \left(\frac{2\pi ix}{l} - \phi_i \right) \end{aligned} \quad (5)$$

where, $c_i = \sqrt{a_i^2 + b_i^2}$ is the modulus or length of the vector $\langle a_i, b_i \rangle$ in the two dimensional plane, is the amplitude and $\phi_i = \tan^{-1} \frac{b_i}{a_i}$ is the angle between the vector $\langle a_i, b_i \rangle$. The reason is that the inverse tangent function only returns values in the interval $[-\frac{\pi}{2}, \frac{\pi}{2}]$, whenever $a_i < 0$ the modified definition $\phi_i = \tan^{-1} \frac{b_i}{a_i} + \pi$ must be used to obtain a true phase angle. The phase angle follows that $\phi_i \in [-\frac{\pi}{2}, \frac{3\pi}{2}]$. If the Fourier coefficient $c_0 = \frac{1}{2} a_0$, then the continuous function $f(x)$ takes the following form:

$$f(x) = c_0 + \sum_{n=1}^{\infty} c_n \cos \left(\frac{2\pi nx}{l} - \phi_n \right) \quad (6)$$

where, the parameter c_n is the amplitude, and ϕ_n is the phase angle of the n th harmonic.

Since can compare the quality of models, outputs from the model are justified with Akaike Information Criterion (AIC), formulated by the Japanese statistician Akaike Hirotosugu in the early 1970 [4]. It is one of the best suitable techniques to select better model using AIC:

$$AIC = -2 (\ln (\text{likelihood})) + 2K \quad (7)$$

AIC may over fit, particularly when sample size becomes small. It is extended further with finite correction and is said AICc, as formulated below:

$$AICc = AIC + \frac{2K^2 + 2K}{n - K + 1} \quad (8)$$

Where, the parameter n and K denote the sample size and the number of free parameters in the model, respectively. When $n \rightarrow \infty$, the extra penalty term converges to 0, and thus AICc converges to AIC. Bayesian Information Criterion (BIC) is formally defined as-

$$BIC = -2 (\ln (\text{likelihood})) + \ln (n) K \quad (9)$$

3 Temperature data analysis

Harmonic analysis of daily temperature data and determination of seasonal boundaries in the analysis for a year are explained in this section, while the detail results from harmonic analyses using data from different stations have been provided in the following section. Before the analysis, the periodicity or the periodic nature of data is examined using spectral analysis. Figure 2(a) shows the one-year time series of daily minimum temperature. The power spectrum of the daily minimum temperature time series for 30 years from 1988-2017 has been estimated using Fourier transformation for Rajshahi station as shown in Figure 2(b), which describes the periodic nature of the data. There are only two higher peaks observed in the analysis at 0.002732 cycles/day and 0.005464 cycles/day, and the peaks are interpreted as the period of 366 days and 183 days, respectively. However, there are many small peaks of frequencies all over the ranges from greater than 0 to more than 1 cycles/day; however peaks in the range from 0 to 0.05 cycles/day only are shown in Figure 2(b). This work likes to visualize the period greater than a month over the data. The periods equal to 36 days or more, equivalent frequency 0.0278 cycles/day or less, are considered in this work. Harmonic analysis is conducted for the periods from 366 days to 36 days or alternatively the frequencies from 0.0027 cycles/day to 0.0278 cycles/day. Used frequency range in harmonic analysis lies between the judged frequencies as shown in Figure 2(b)

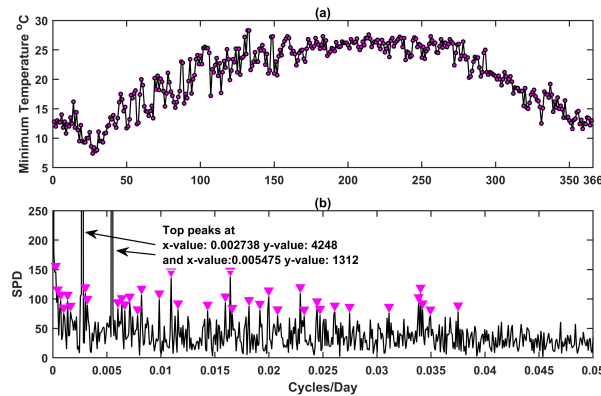


Figure 2: a) Daily minimum temperature at Rajshahi station for the year 1988, and b) spectral power density (SPD) of the total length of daily minimum temperature during 1988-2017; pink or violet triangles indicates the peaks; the presence of periodic nature of data and the period is the reciprocal of Cycles/Day at each peak. The x-values of top peaks in Cycles/Day have been indicated with arrows.

Harmonics are the waves or signals of individual frequencies in the time series. It is assumed that all successive frequencies together with appropriate amplitude and phase can reproduce the real time series. Frequency of the harmonics can be defined, as shown in Equation (6), n/l , where, l is the total number of days in the year and $n = 1, 2, 3, \dots, 365$ or 366 . This way the total harmonics can be employed for the frequencies $1/366$ ($=0.002732$) to $366/366$ ($=1$) cycles/day with respect to the number of days in the year. On other hand, estimated spectral analysis of the climate time series has figured that the power densities are high at adjacent values to the frequencies of 0.002732 cycles/day and 0.005464 cycles/day (Figure 2(b)). The remaining frequencies are of very low power densities. Therefore, setting the frequency range from 0.0027 cycles/day to 0.0278 cycles/day for the harmonic analysis of climate time series appears sensible to reconstruct the basic time series as shown in Figure 3(a) with the error, and to visualize the seasons over few harmonics in a year.

Figures 3(a-c) show the harmonic analysis over daily minimum temperature data recorded at Rajshahi station in the year 1988 for studying the seasonal boundaries. Figure 3(a) shows the reconstructed daily temperature along with original records using 366 harmonics. Estimations of total of 10 successive harmonics ($n = 1, 2, 3, \dots, 10$) are to be applied to define the seasonal boundaries. Among 10, first five individual estimated

Table 2: Examples of estimated seasonal boundaries

Akaike Information Criterion						Seasonal Boundaries on the day in a year 366 days from the analogy with 1H					
	1H	2H	3H	4H	5H		1H&2H	1H&3H	1H&4H	1H&5H	Average
AIC	831.10	802.05	800.95	799.68	798.09	B1	57	58	58	54	57
AICc	831.21	802.16	801.06	799.79	798.20	B2	148	143	140	143	144
BIC	850.61	821.56	820.47	819.19	817.61	B3	240	237	238	244	240
MSE	0.1649	0.1067	0.1047	0.1025	0.0997	B4	331	336	339	348	339

-H indicates resultant harmonics e.g. 1H for first harmonic, 2H for resultant of 1st and 2nd harmonics, 3H for resultant of 1st, 2nd and 3rd harmonics and so on.

B- indicates the first, second, third and fourth boundaries.

The lower values of AIC and modified AICc or BIC indicate better model fit (the estimation using 5H is better than 1H; mean square error, MSE is also indicating the same having smaller at 5H). According to estimated MSE, the uses of the estimated harmonics, 1H to 5H are reasonable to define seasonal boundaries as estimated four boundaries keeping common 1H with others.

harmonics are shown in Figure 3(b). Cumulative or successive five harmonics are shown in Figure 3(c) and marked as 1H, 2H, 3H, 4H and 5H. In Figure 3(c), the days in which successive harmonics are same or close to the same value of amplitude are seasonal boundaries, and marked as B1, B2, B3 and B4. Table 2 shows a detail understanding of harmonic analysis to help determine the boundaries in the year. *AICs* were estimated for each successive harmonics, and it has found that *MSE* and *AICc* are lower with the increasing number of harmonics (Table 2). Figure 3(c) shows the boundaries indicated with an arrow mark, termed as B1, B2, B3 and B4.

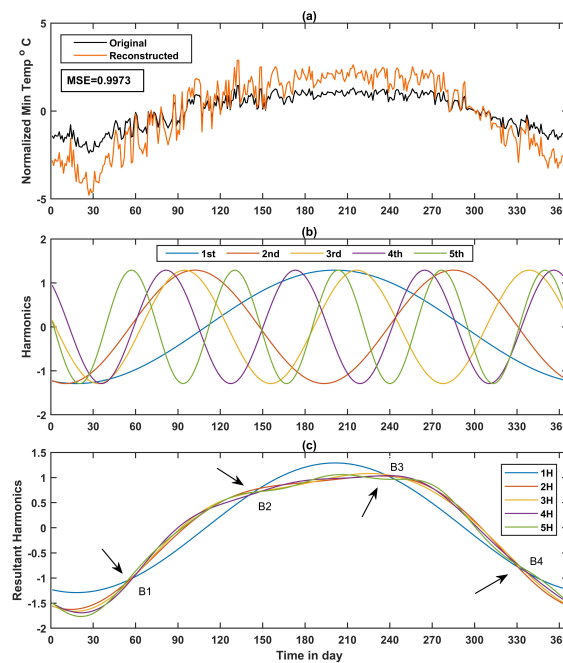


Figure 3: Harmonic analysis of a) normalized daily minimum temperature recorded at Rajshahi station in 1988, and reconstructed daily temperature using 366th end harmonics, b) five harmonics estimated from daily data (a) using Equations (1-4), and c) resultant harmonics, seasonal boundaries are marked with arrow indicated lines.

4 Results and discussions

First ten, instead of five as shown in Figure 3(c) above, successive harmonics of temperature time series recorded at six stations were estimated year by year using the equations (1-6) as described earlier. The boundary of a season is the time when the amplitude of the harmonics becomes identical, and in the yearly analyses four boundaries are obtained. Estimated yearly boundaries termed as B1, B2, B3 and B4 in minimum and maximum temperature with harmonic analysis are basically in days. Estimations of such seasonal boundaries and the respective conversion to calendar date in minimum and maximum temperature over time are shown in Figures 4-5. The first, second, third and fourth boundaries vary between 49th and 54th day, 137th and 146th day, 240th and 246th day, and 325th and 338th day, respectively, throughout the time series. Variation in estimated boundaries within a year is trivial, however boundaries along the year have little \pm trends.

For Rajshahi station, first, second, third and fourth boundaries, marked B1, B2, B3 and B4 in the analysis using minimum temperature, are obtained at 57th, 143rd, 243rd and 332nd day, respectively. The same boundaries are obtained at 54th, 144th, 241st and 336th day in the analysis using maximum temperature. Estimations of seasonal boundaries using both minimum and maximum temperature are found to be very close.

For Ishwardi station, first, second, third and fourth boundaries are obtained at 56th, 142nd, 241st and 329th day, and at 54th, 144th, 241st and 337th day using minimum and maximum temperature, respectively.

For Bogura station, first, second, third and fourth boundaries are obtained at 51st, 137th, 240th and 331st day, and at 54th, 146th, 246th and 338th day using minimum and maximum temperature, respectively.

For Rangpur station, first, second, third and fourth boundaries are obtained at 52nd, 140th, 240th and 330th, and at 50th, 142nd, 241st and 335th day using minimum and maximum temperature, respectively.

For Syedpur station, first, second, third and fourth boundaries are obtained at 49th, 138th, 240th and 329th, and at 50th, 143rd, 241st and 335th day using minimum and maximum temperature respectively.

For Dinajpur station, first, second, third and fourth boundaries are obtained at 49th, 137th, 238th and 325th, and at 51st, 142nd, 243rd and 338th day using minimum and maximum temperature, respectively.

Identified seasons at six stations over 30 years appear to be almost unvarying. Thus, it may be argued that the study locations belong to an identical climate zone that has comparable four different seasons.

The boundaries estimated for different stations appear to start little earlier in the northern stations than that of the south. Overall boundaries estimated in calendar date using harmonic analysis in daily minimum and maximum temperature in different stations are shown in Figure 6 and Table 3. Spatial variation in the boundaries of the seasons in the study area is found to be very small and varying from 1 to 4 days.

Table 3: Station-wise seasonal boundary

Stations	Seasonal boundary: Starting day							
	First Season		Second Season		Third Season		Fourth Season	
	N. Day	C. Day	N. Day	C. Day	N. Day	C. Day	N. Day	C. Day
Rajshahi	55	25 February	144	23 May	242	20 August	336	22 November
Ishwardi	55	25 February	143	22 May	241	19 August	333	19 November
Bogura	52	22 February	142	21 May	243	21 August	335	21 November
Rangpur	51	21 February	141	20 May	240	18 August	333	19 November
Syedpur	49	19 February	141	20 May	241	19 August	332	18 November
Dinajpur	50	20 February	140	19 May	241	19 August	331	17 November

N-number, C-calendar

Estimated duration of the four seasons are mostly March-May, June-August, September-November and December-February, and the findings are in line with the seasons as argued by Shahid (2010a, b) [51, 52] and Syed and Amin (2016) [53]. Seasonality may not be uniquely defined due to different methods employed to isolate seasonal components [42]. The traditional approach assumes a periodic response. Franses (1996) [16] and Lund et al. (1995) [35] used periodic correlation to differentiate the seasonal variation. This work is also

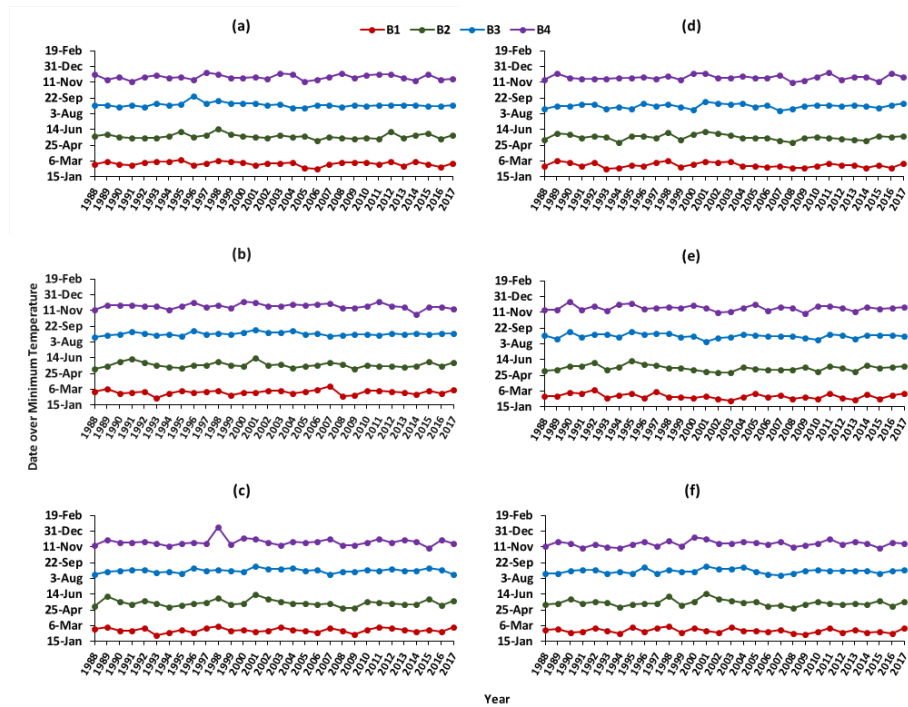


Figure 4: Estimated seasonal boundaries, B- over harmonic analyses of minimum temperature for the stations at a) Rajshahi, b) Ishwardi, c) Bogura, d) Rangpur, e) Syedpur, and f) Dinajpur.

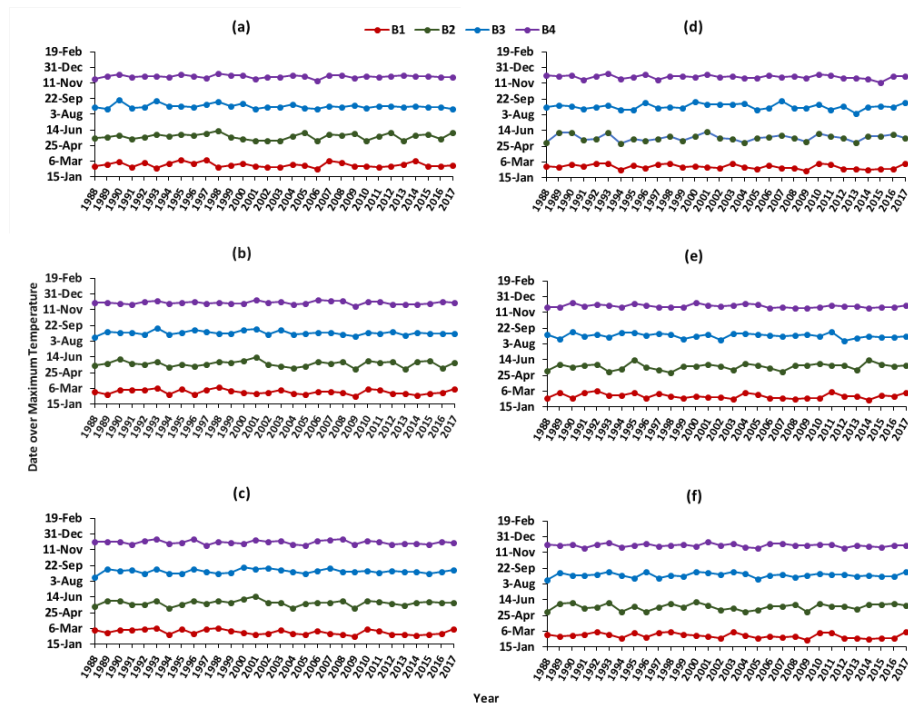


Figure 5: Estimated seasonal boundaries, B- over harmonic analyses of maximum temperature for the stations at a) Rajshahi, b) Ishwardi, c) Bogura, d) Rangpur, e) Syedpur, and f) Dinajpur.

the approach of periodicity analysis of climate time series that has used the phases with the same amplitude of the estimated harmonics, and identified four seasons in the northwest region of Bangladesh. The estimated

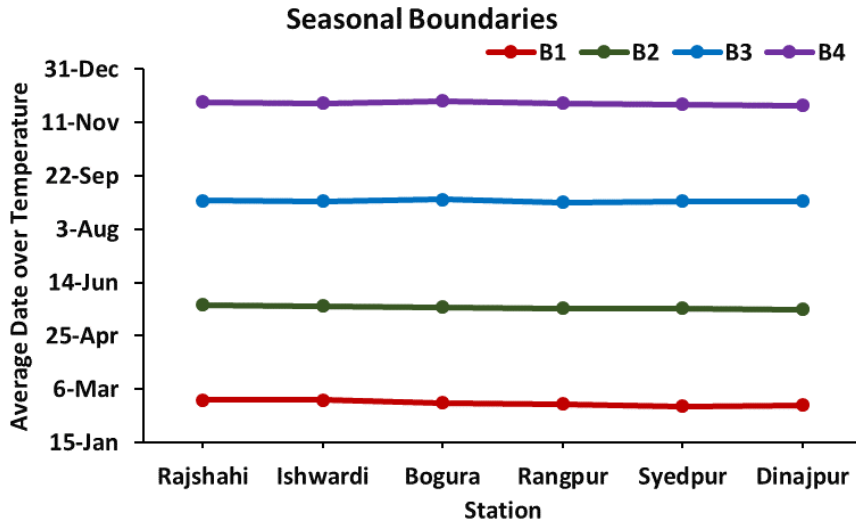


Figure 6: Overall seasonal boundaries in calendar date with stations.

four seasons and seasonal boundaries are not precise, yet sufficiently aligned with the traditional six-season concept.

Periodic movement of the earth around the sun and their corresponding position provide the circulation of the terrestrial climate that result in four meteorological seasons [63]. In the northern hemisphere (22.5-67.5°N) seasons are identified for the durations 8 December-9 March, 9 March-8 June, 8 June-8 September and 8 September-8 December with 91.25 days of seasonal length [9, 57]. Along with summer monsoon four meteorological seasons in Bangladesh are pre-monsoon (March, April and May), monsoon (June to September), post-monsoon (October and November) and winter (December, January and February) [24, 28]. This work has also visualized similar four seasons with an average seasonal length of 90.5 days (from 82 to 101 days) as shown in Table 3. However, the seasonal lengths found are not uniform. Length of the fourth season appears 84 days, while the second season appears 100 days and the remaining lengths fall between 84 to 100 days. Little early-start of season and variation in seasonal length coupled with observed temperature pattern provide the evidences of change in local climate and weather.

Higher temperatures along with changing rainfall, frequent flood and drought, rising salinity are likely to reduce crop yields and crop production, and eventually income of the farmers [18, 37]. During the last decades, researchers around the world have shown massive interests about adaptation interventions in agriculture in the context of climate change. IPCC (2014) [22] estimated that, by 2050, rice and wheat production in Bangladesh could decline by 8 and 32%, respectively (against a base year of 1990). Since adaptation is a priority to address the adverse impacts of climate change, agriculture-based economy like Bangladesh has started to intervene various adaptation measures including crop diversification, change in harvesting time, saline-tolerant and drought-resistance varieties, as well as combined crop-livestock farming [10, 43, 56]. Among these interventions, change in harvesting time requires special attention, since core agriculture is primarily season-based. Harvesting should be done according to the shift in seasons.

National policies and practices related to farming and agriculture may be fine-tuned over long-term based on analyses this study attempted. For example, if seed delivery time arranged by the agricultural extensions services was the first week of March 30 years back, change in seasonality may require the service to be shifted according to the actual change in season after 30 years. Besides, if specialized financial institutions provide any facility to the farmers, the time for planning the fund requirement would change with the shift in season. For many of the developing countries, agriculture is the core contributor to gross domestic product. If it is not practiced considering seasonality, agricultural output may decline which would result in reduced national income.

5 Conclusion

Investigation about seasonal variability is very common in climate change research. Understanding seasons along with the variations is important to comprehend meaningful climate of a region. This work decomposed the temperature time series into successive harmonics, and harmonics had also reconstructed the time series. Using decomposed temperature data harmonics seasonal boundaries were estimated. Four boundaries were estimated in each of the year from 1988 to 2017 and presented in this article. First, second, third and fourth seasonal boundaries were visualized within 19-25 February, 19-23 May, 18-20 August and 17-22 November, respectively. Hence, apparent seasons found were from March to May, from June to August, from September to November and from December to February. Results have showed that the seasonal boundaries in a year are varying from 2 days to 6 days in a 30-year time frame. Similar research using data from all stations in the country would help in developing a national climate calendar to assist policymaker.

Further observations can also be noted that there were little trends close to a slope of ± 0.05 of the estimated boundary in a year; however, 30-year long time series is not sufficient enough to make an error-proof trend over the boundary. For reasonable trend analysis, the length of the time series should be of 100 years or more. Nonetheless, in absence of data for a longer time span in Bangladesh context, this study is likely to contribute to the formation of local climate calendar, a near-future necessity of agricultural extensions services provided by the government. The estimation of realistic season consequently may assist in increased agricultural and industrial productivity.

Acknowledgement: Authors gratefully acknowledge anonymous reviewers and editor for giving sincere remarks and suggestions to improve the manuscript. Authors also acknowledge Bangladesh Meteorological Department for providing data.

References

- [1] M. B. Abdelmalek and I. Nouiri. Study of trends and mapping of drought events in Tunisia and their impacts on agricultural production. *Science of the Total Environment*, 734: 139311, 2020.
- [2] B. Ahmed, I. Kelman, M. Kamruzzaman, H. Mohiuddin, M. M. Rahman, A. Das, ... and M. Shamsudduha. Indigenous people's responses to drought in northwest Bangladesh. *Environmental Development*, 29: 55-66, 2019.
- [3] R. Ahmed and S. Karmakar. Arrival and withdrawal dates of the summer monsoon in Bangladesh, *International Journal of Climatology*, 13: 727-740, 1993.
- [4] H. Akaike. A new look at the statistical model identification. *IEEE Transactions on Automatic Control*, 19(6): 716-723, 1974. doi:10.1109/TAC.1974.1100705
- [5] M. Alauddin and M. A. R. Sarker. Climate change and farm-level adaptation decisions and strategies in drought-prone and groundwater-depleted areas of Bangladesh: an empirical investigation. *Ecol. Econ.*, 106: 204-213, 2014.
- [6] R. Y. Anderson and L. H. Koopmans. Harmonic analysis of varve time series. *Journal of Geophysical Research*, 68: 877-893, 1963.
- [7] Z. Aslan, D. O. cu and S. Kartal. Harmonic analysis of precipitation, pressure and temperature over Turkey. *Il Nuovo cimento*, 20: 595-605, 1997.
- [8] Banglapedia. National Encyclopedia of Bangladesh, 2015. <http://en.banglapedia.org/index.php?title=Season> retrieved on: 7 Feb 2019.
- [9] N. H. Battey. Aspects of seasonality. *Journal of Experimental Botany*, 51(352): 1769-1780, 2000.
- [10] B. Bradshaw, H. Dolan and B. Smit. Farm-level adaptation to climatic variability and change: crop diversification in the Canadian prairies. *Climatic Change*, 67(1): 119-141, 2004.
- [11] L. Cvitan. Harmonic analysis of the seasonal cycle in temperature over the Biokovo area (Croatia). *Int. J. Climatol*, 15(10): 1151-1159, 1995. DOI: 10.1002/joc.3370151007
- [12] S. Dasgupta, M. M. Hossain, M. Huq and D. Wheeler. Climate change, salinization and high-yield Rice production in coastal Bangladesh. *Agricultural and Resource Economics Review*, 47(1): 66-89, 2018.
- [13] J. C. Davis. Statistics and data analysis in geology, Second Edition. *J. Wiley and Sons*, New York, NY. 646p, 1986.
- [14] C. de Boor. A Practical Guide to Splines. *Applied Mathematical Sciences*, Springer-Verlag, New York, XVIII, 348p, 1978.
- [15] A. Donohoe, E. Dawson, L. McMurdie, D. S. Battisti and A. Rhines. Seasonal Asymmetries in the Lag between Insolation and Surface Temperature. *J. Climate* 33: 3921-3945, 2020. <https://doi.org/10.1175/JCLI-D-19-0329.1>

- [16] P. H. Franses. Periodicity and Stochastic Trends in Economic Time Series. *Oxford University Press*, 230p, 1996.
- [17] S. Gadgil. The Indian monsoon and its variability. *Annual Review of Earth and Planetary Sciences*, 31(1): 429-467, 2003.
- [18] M. M. Hasan, M. Alauddin, M. A. R. Sarker, M. Jakaria and M. Alamgir. Climate sensitivity of wheat yield in Bangladesh: Implications for the United Nations sustainable development goals 2 and 6. *Land Use Policy*, 87: 104023, 2019.
- [19] M. K. Hasan, S. Desiere, M. D'Haese and L. Kumar. Impact of climate-smart agriculture adoption on the food security of coastal farmers in Bangladesh. *Food Security*, 10(4): 1073-1088, 2018.
- [20] M. S. Hossain, L. Qian, M. Arshad, S. Shahid, S. Fahad and J. Akhter. Climate change and crop farming in Bangladesh: an analysis of economic impacts. *International Journal of Climate Change Strategies and Management*, 11(3): 424-440, 2019. <https://doi.org/10.1108/IJCCSM-04-2018-00300>
- [21] IPCC. Climate Change 2013: The Physical Science Basis. Summary for Policymakers. *Contribution of Working Group I to the IPCC Fifth Assessment Report*, 2013.
- [22] IPCC. Climate Change 2014: Mitigation of climate change. Summary for Policymakers. *Contribution of Working Group III to the IPCC Fifth Assessment Report*, 2014.
- [23] M. S. Islam, M. Z. Hossain and M. B. Sikder. Drought adaptation measures and their effectiveness at Barind Tract in north-west Bangladesh: a perception study. *Natural Hazards*, 97(3): 1253-1276, 2019.
- [24] M. Islam and K. Kotani. Changing seasonality in Bangladesh. *Reg Environ Change*, 16, 585-590, 2016. <https://doi.org/10.1007/s10113-015-0758-5>
- [25] M. Jakariya, M. S. Alam, M. A. Rahman, S. Ahmed, M. L. Elahi, A. M. Khan, S. Saad, H. M. Tamim, T. Ishtiaq, S. M. Sayem, M. S. Ali and D. Akter. Assessing climate-induced agricultural vulnerable coastal communities of Bangladesh using machine learning techniques. *Science of the Total Environment*, 742: 140255, 2020.
- [26] M. E. Jakubauskas, D. Legates and J. H. Kastens. Harmonic analysis of time-series AVHRR NDVI data. *Photogrammetric Engineering and Remote Sensing*, 67: 461-470, 2001.
- [27] F. Justino, A. Setzer, T. J. Bracegirdle, D. Mendes, A. Grimm, G. Dechiche and C. E. G. R. Schaefer. Harmonic analysis of climatological temperature over Antarctica: present day and greenhouse warming perspectives. *Int. J. Climatol*, 31: 2055-2067, 2010. DOI: 10.1002/joc.2090
- [28] M. F. Karim and N. Mimura. Impacts of climate change and sea-level rise on cyclonic storm surge floods in Bangladesh. *Global Environmental Change*, 18: 490-500, 2008. <http://dx.doi.org/10.1016/j.gloenvcha.2008.05.002>
- [29] M. A. Khatun, M. B. Rashid and H. O. Hygen. Climate of Bangladesh. *MET report*, no. 08/2016 ISSN 2387-4201 Climate, 2016.
- [30] M. J. U. Khan, A. K. M. S. Islam, M. K. Das, K. Mohammed, S. K. Bala and G. M. T. Islam. Observed trends in climate extremes over Bangladesh from 1981 to 2010. *Clim Res*, 77:45-61, 2019. <https://doi.org/10.3354/cr01539>
- [31] C. P. Kumbuyo, H. Yasuda, Y. Kitamura and K. Shimizu. Fluctuation of rainfall time series in Malawi: An analysis of selected areas. *Geofizika*, 31: 13-28, 2014. DOI: 10.15233/gfz.2014.31.1
- [32] M. G. Landin and L. F. Bosart. The diurnal variation of precipitation in California and Nevada. *Monthly Weather Review*, 117: 1801-1816, 1989.
- [33] D. R. Legates and C. J. Wiott. Mean seasonal and spatial variability in gauge-corrected, global precipitation. *International Journal of Climatology*, 10(2): 111-127, 1990a.
- [34] D. R. Legates and C. J. Wiott. Mean seasonal and spatial variability in global surface air temperature. *Theoretical and Applied Climatology*, 44(1): 11-21, 1990b.
- [35] R. Lund, H. Hurd, P. Bloomfield and R. Smith. Climatological time series with periodic correlations. *Journal of Climate*, 8: 2787-2809, 1995.
- [36] W. May, D. Shea and C. Madden. The annual variation of surface temperature over the world. NCAR Tech. Note NCAR/TN-372+STR, 134pp, 1992. Retrieved from <https://opensky.ucar.edu/islandora/object/technotes:139> (Accessed 12 October 2020)
- [37] M. M. Miah, A. E. Haque and S. Hossain. Economic impact of climate change on wheat productivity in Bangladesh: A Ricardian approach. In *Science, Policy and Politics of Modern Agricultural System*, 97-108, 2014. Springer, Dordrecht.
- [38] V. Moron, A. W. Robertson and D. S. Pai. On the spatial coherence of sub-seasonal to seasonal Indian rainfall anomalies. *Climate Dynamics*, 49(9-10): 3403-3423, 2017.
- [39] S. K. Padhee and S. Dutta. Spatio-temporal Reconstruction of MODIS NDVI by Regional Land Surface Phenology and Harmonic Analysis of Time-series. *GIScience and Remote Sensing*, 56 (8) 1261-1288, 2019. doi:10.1080/15481603.2019.1646977.
- [40] D. S. Pai, L. Sridhar, M. Rajeevan, O. P. Sreejith, N. S. Satbhai and B. Mukhopadhyay. Development of a new high spatial resolution (0.25× 0.25) long period (1901–2010) daily gridded rainfall data set over India and its comparison with existing data sets over the region. *Mausam*, 65(1), 1-18, 2014.
- [41] I. Pal and A. Al-Tabbaa. Trends in seasonal precipitation extremes—An indicator of ‘climate change’ in Kerala, India. *Journal of Hydrology*, 367(1-2): 62-69, 2009.
- [42] S. Pezzulli, D. B. Stephenson and A. Hannachi. The Variability of Seasonality. *Journal of Climate*, 18: 71-88, 2005.
- [43] G. Rabbani, A. Rahman and K. Mainuddin. Salinity-induced loss and damage to farming households in coastal Bangladesh. *International Journal of Global Warming*, 5(4): 400-415, 2013.
- [44] M. R. Rahman and H. Lateh. Climate change in Bangladesh: a spatio-temporal analysis and simulation of recent temperature and rainfall data using GIS and time series analysis model. *Theor Appl Climatol*, 128: 27-41, 2017. DOI 10.1007/s00704-015-

- 1688-3
- [45] S. Rahman and A. R. Anik. Productivity and efficiency impact of climate change and agroecology on Bangladesh agriculture. *Land Use Policy*, 94: 104507, 2020.
- [46] Z. Rakib. Characterization of Climate Change in Southwestern Bangladesh: Trend Analysis of Temperature, Humidity, Heat Index and Rainfall. *Climate Research*, 76: 241-252, 2018. DOI: 10.3354/cr01535.
- [47] J. N. Rayner. An Introduction to Spectral Analysis, *Pion Ltd.*, London, 174p, 1971.
- [48] A. C. Ruane, D. C. Major, H. Y. Winston, M. Alam, S. G. Hussain, A. S. Khan,... and C. Rosenzweig. Multi-factor impact analysis of agricultural production in Bangladesh with climate change. *Global Environmental Change*, 23(1): 338-350, 2013.
- [49] B. D. Santer, S. Po-Chedley, M. D. Zelinka, I. Cvijanovic, C. Bonfils, P. J. Durack, Q. Fu, J. Kiehl, C. Mears, J. Painter, G. Pallotta, S. Solomon, F. J. Wentz and C. Z. Zou. Human influence on the seasonal cycle of tropospheric temperature. *Science*, 361(6399): 1-11, 2018. <https://doi.org/10.1126/science.aas8806>.
- [50] M. Schulz and K. Statterger. Spectral analysis of unevenly spaced paleoclimatic time series. *Computers and Geosciences*, 23:929-945, 1997.
- [51] S. Shahid. Recent trends in the climate of Bangladesh. *Climate Research*, 42(3): 185-193, 2010a.
- [52] S. Shahid. Rainfall variability and the trends of wet and dry periods in Bangladesh, *Int. J. Climatol*, 30: 2299-2313, 2010b. DOI: 10.1002/joc.2053
- [53] M. A. Syed and M. A. Amin. Geospatial Modeling for Investigating Spatial Pattern and Change Trend of Temperature and Rainfall. *Climate*, 4(21): 1-16, 2016. doi:10.3390/cli4020021
- [54] Q. Tarawneh. Harmonic analysis of precipitation climatology in Saudi Arabia. *Theor Appl Climatol*, 124: 205-217, 2016. <https://doi.org/10.1007/s00704-015-1408-z>
- [55] M. Tayanç, M. Karaca and O. Yenigün. Annual and seasonal air temperature trend patterns of climate change and urbanization effects in relation to air pollutants in Turkey. *Journal of Geophysical Research: Atmospheres*, 102(D2): 1909-1919, 1997.
- [56] G. B. Tesfahunegn, K. Mekonen and A. Tekle. Farmers' perception on causes, indicators and determinants of climate change in northern Ethiopia: implication for developing adaptation strategies. *Applied Geography*, 73: 1-12, 2016.
- [57] K. E. Trenberth. What are the seasons? *Bulletin of the American Meteorological Society*, 64(11): 1276-1282, 1983.
- [58] D. Thomson. The seasons, global temperature, and precession. *Science*, 268: 59-68, 1995. <https://doi.org/10.1126/science.268.5207.59>.
- [59] H. VanLoon, R. L. Jenne and K. Labitzke. Zonal Harmonic Standing Waves. *Journal of Geophysical Research*, 78: 4463-4471, 1973.
- [60] Y. Wang, W. Zhao, Q. Zhang and Y. B. Yao. Characteristics of drought vulnerability for maize in the eastern part of Northwest China. *Scientific reports*, 9(1): 1-9, 2019.
- [61] P. J. Webster, V. O. Magana, T. N. Palmer, J. Shukla, R. A. Tomas, M. U. Yanai and T. Yasunari. Monsoons: Processes, predictability, and the prospects for prediction. *Journal of Geophysical Research: Oceans*, 103(C7): 14451-14510, 1998.
- [62] T. Wheeler and J. Von Braun. Climate change impacts on global food security. *Science*, 341(6145): 508-513, 2013.
- [63] WMO. Guide to Climatology Practices. 2018 edition. *World Meteorological Organization*. WMO No. 100, Geneva, 2018.
- [64] World Bank. World Bank lists most vulnerable countries to climate change. 2019. (southasia.oneworld.net) <https://disqus.com/home/forums/owsa/>, retrieved on March 23, 2019.
- [65] World Bank. Bangladesh: lighting up rural communities. 2011. Retrieved June 05, 2012, from <http://go.worldbank.org/3DX5GJ26B0>
- [66] J. M. Wallace. Diurnal variation in precipitation and thunderstorm frequency over the conterminous United States. *Monthly Weather Review*, 103: 406-419, 1975.
- [67] V. Yevjevich. Stochastic processes in hydrology, Water Resources Publications, Ft. Collins, Colorado, 276p, 1972.
- [68] W. Zhang, A. Huang, Y. Zhou, B. Yang, D. Fang, L. Zhang and Y. Wu. Diurnal cycle of precipitation over Fujian Province during the pre-summer rainy season in southern China. *Theoretical and Applied Climatology*, 130(3-4): 993-1006, 2017.